

# FOR LEASE



**1680 Woodward Dr.  
OTTAWA, ONTARIO**



1680 Woodward Dr.  
OTTAWA, ONTARIO

| UNIT      | AREA     | MINIMUM RENT  | ADDITIONAL RENT | AVAILABILITY  |
|-----------|----------|---------------|-----------------|---------------|
| 203       | 931 SF   | \$2,000/MONTH | --              | NOVEMBER 2024 |
| 208 & 210 | 2,661 SF | \$12/SF       | \$13.69/SF      | NOVEMBER 2024 |
| 214       | 535 SF   | \$12/SF       | \$13.69/SF      | IMMEDIATE     |



**THE PROPERTIES GROUP MANAGEMENT LTD.**  
236 Metcalfe Street, Ottawa, ON K2P 1R3

(613) 369-5635 / [leasing@prpgrp.com](mailto:leasing@prpgrp.com)  
[www.thepropertiesgroup.ca](http://www.thepropertiesgroup.ca)



1680 Woodward Dr.  
OTTAWA, ONTARIO



\*Rendering



Unit 201

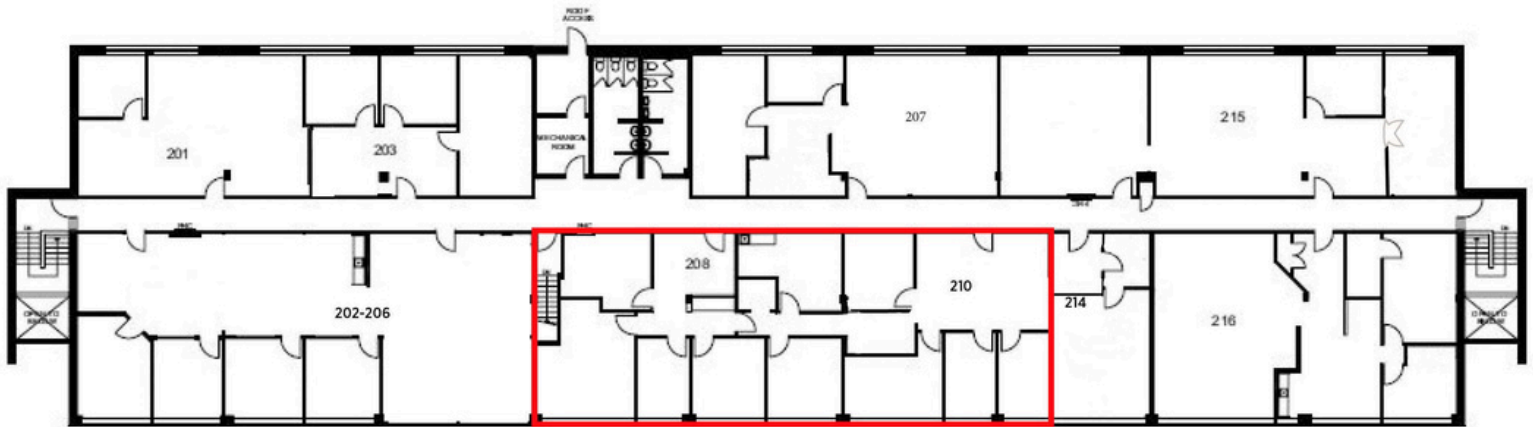


\*Rendering



1680 Woodward Dr.  
OTTAWA, ONTARIO

## UNIT 208 - 2,661 square feet



THE ATTACHED DRAWINGS ARE PROVIDED FOR INFORMATION PURPOSES ONLY AND SHOULD NOT BE RELIED UPON. THE LANDLORD SHALL NOT BE HELD RESPONSIBLE FOR THE PURPOSE OF THE TENANT'S WORK AND SPACE PLANNING.

## UNIT OVERVIEW

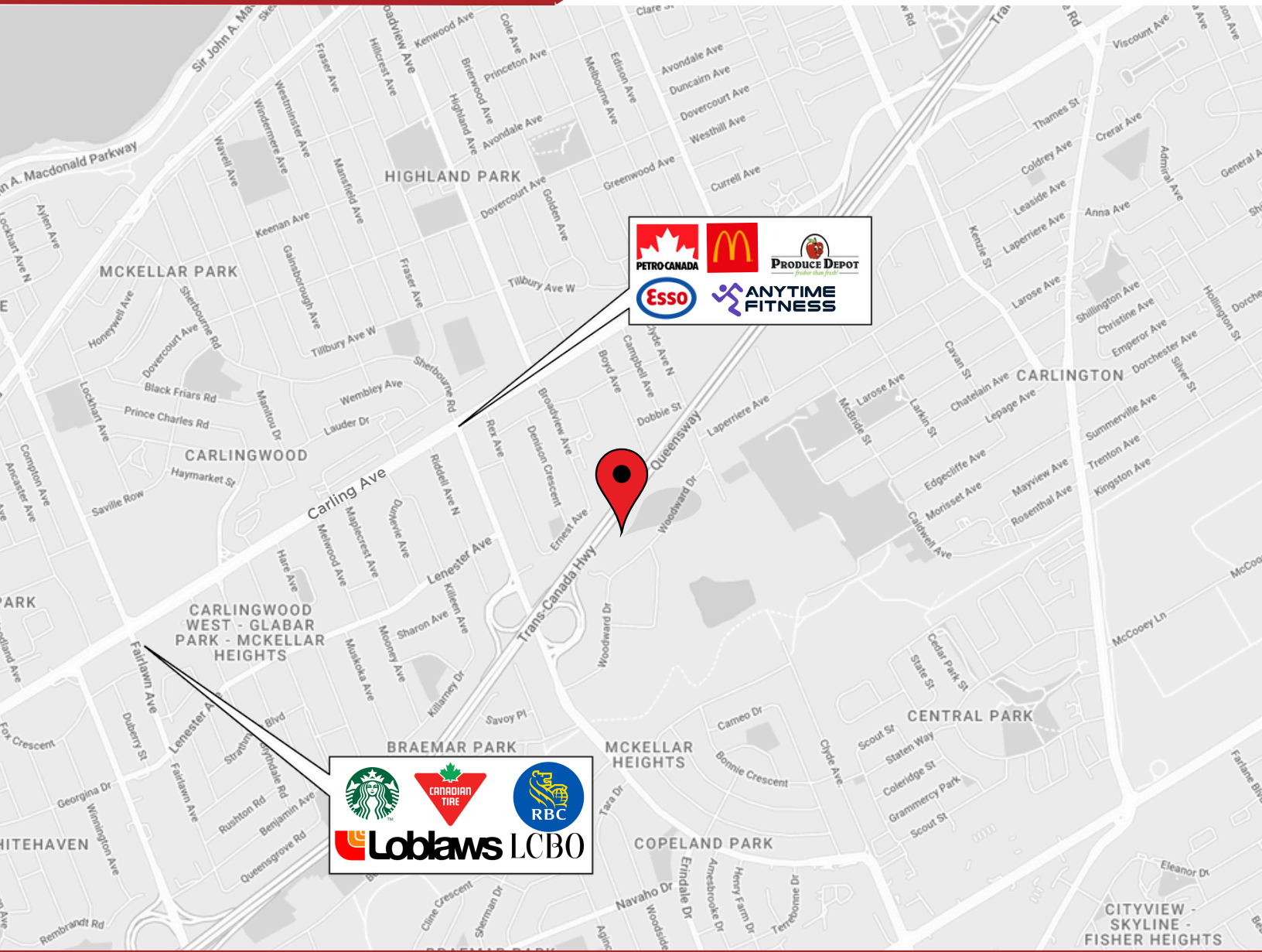
Centrally located in the Woodward Industrial Park, close to Carling Ave. and Hwy 417, this north-facing, second-floor unit offers large windows and an abundance of natural light. This flexible office space can be tailored to suit your business needs and is available in as-is condition. The space currently has a large open concept area that can allow for a lunchroom and boardroom, has existing enclosed offices. The building also offers after-hour access with a fob, recently renovated common washrooms, and on-site parking.

## UNIT HIGHLIGHTS

- Natural Light
- 8.3' Drop Ceilings
- Boardroom
- Employee kitchen area



1680 Woodward Dr.  
OTTAWA, ONTARIO



## LOCATION DETAILS

- Public transit stop nearby
- Close to Carling Ave. and Hwy 417
- Centrally located in the Woodward Industrial Park

Information contained herein has been obtained from sources that we deem to be reliable but is not warranted as such and does not form any part of any future contract. This offering may be altered or withdrawn at any time without notice.

**THE PROPERTIES GROUP MANAGEMENT LTD.**  
236 Metcalfe Street, Ottawa, ON K2P 1R3

**(613) 369-5635 / [leasing@prpgrp.com](mailto:leasing@prpgrp.com)**  
**[www.thepropertiesgroup.ca](http://www.thepropertiesgroup.ca)**