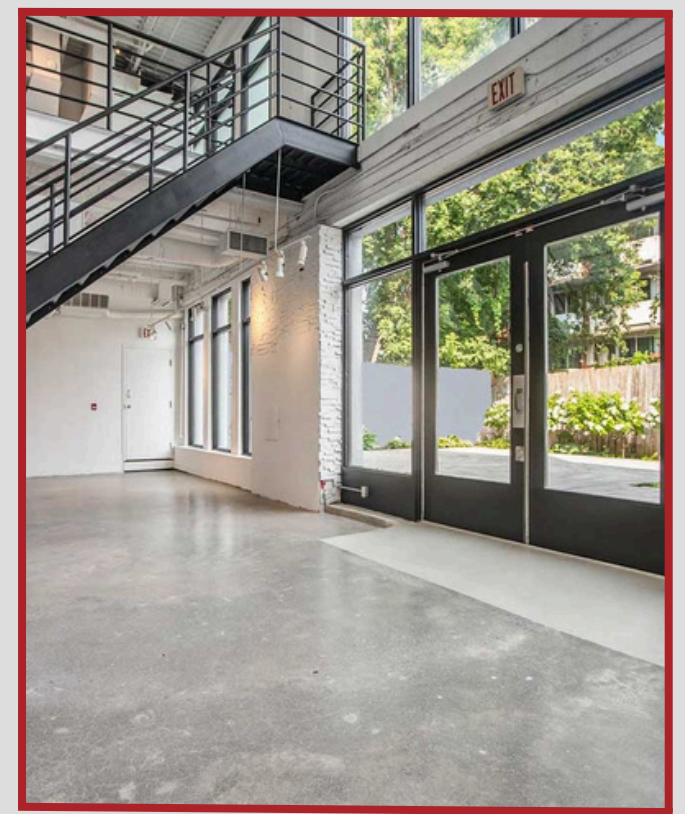
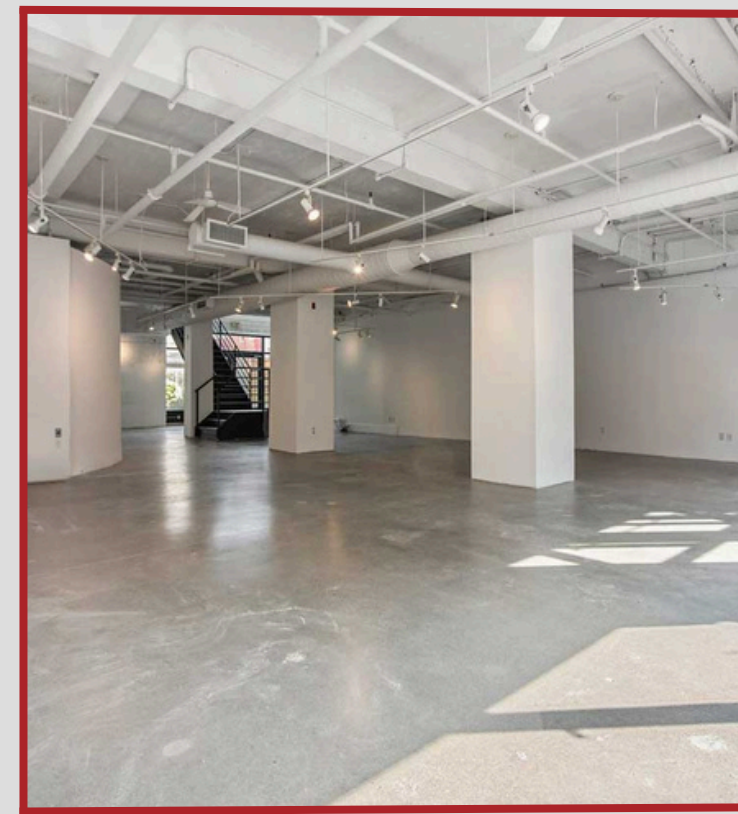



Available Properties




OTTAWA, ON | OFFICE FLEX | FOR LEASE

ADDRESS	UNIT	AREA	MINIMUM RENT	ADDITIONAL RENT	AVAILABILITY	COMMENTS
 222 Somerset St. W.	100	2,296 SF	\$25.00/SF	\$19.72/SF	IMMEDIATE	Multiple office units available in the Golden Triangle. Located between Metcalfe and Elgin with access to in-building fitness center.
	200	5,012 SF	\$13.00/SF	\$19.72/SF	IMMEDIATE	
	300	6,665 SF	\$13.00/SF	\$19.72/SF	IMMEDIATE	
	600	6,673 SF	\$13.00/SF	\$19.72/SF	IMMEDIATE	
	701	2,994 SF	\$17.00/SF	\$19.72/SF	IMMEDIATE	
 1680-1690 Woodward Dr.	203	931 SF	\$2,000/MONTH	--	IMMEDIATE	Customizable offices close to HWY 417.
	208	2,661 SF	\$12/SF	\$13.69/SF	IMMEDIATE	
	214	535 SF	\$1,200/MONTH	--	IMMEDIATE	
	208-214	3,196	\$12/SF	\$13.69/SF	IMMEDIATE	
 105 Murray St.	105	3,271 SF	\$15/SF	\$15.26/SF	IMMEDIATE	Multipurpose studio/office space.


OTTAWA, ON | OFFICE FLEX | FOR LEASE

ADDRESS	UNIT	AREA	MINIMUM RENT	ADDITIONAL RENT	AVAILABILITY	COMMENTS
 1550 Chatelain Ave.	--	812 SF	CONTACT US	CONTACT US	SEPTEMBER 2025	This space boasts natural lighting and is currently set up as a dance studio.


OTTAWA, ON | INDUSTRIAL SPACE | FOR LEASE

 1546 Chatelain Ave.	--	2,841 SF	\$5,500/MONTH	--	IMMEDIATE	Split-level industrial space offers expansive storage, and overhead garage door.
--	----	----------	---------------	----	-----------	--


OTTAWA, ON | RETAIL SPACE | FOR LEASE

 1309 Wellington St. W.	--	--	--	--	LEASED	--
--	----	----	----	----	--------	----


OTTAWA, ON | RETAIL SPACE | FOR LEASE

ADDRESS	UNIT	AREA	MINIMUM RENT	ADDITIONAL RENT	AVAILABILITY	COMMENTS
 <p>43 York St.</p>	--	494 SF	\$5,000/MONTH	--	MAY 2025	Retail space located in the ByWard Market with 25 feet of retail frontage.
 <p>6 Byward Market Sq.</p>	--	--	--	--	LEASED	--
 <p>101 Murray St.</p>	--	3,434 SF	\$9,000/MONTH	\$13.84	IMMEDIATE	Bright retail space with a large back patio located in the heart of Ottawa's ByWard Market.


MARITIMES | INDUSTRIAL SPACE | FOR LEASE

ADDRESS	UNIT	AREA	MINIMUM RENT	ADDITIONAL RENT	AVAILABILITY	COMMENTS
 <p>Maritimes</p>	--	50,000 SF	CONTACT US	CONTACT US	CONTACT US	The building sits on approximately 4 acres of paved and landscaped land and benefits from a rail siding. 20-foot-high ceilings, a loading dock with two overhead doors, and a grade-level loading dock.


SAULT STE. MARIE, ON | RETAIL | FOR LEASE

 <p>475 Pim St.</p>	--	35,161 SF	\$14.50/SF	TBD	IMMEDIATE	Large commercial building located on Sault Ste. Marie's commercial strip with ample parking.
--	----	-----------	------------	-----	-----------	--

SAULT STE. MARIE, ON | DEVELOPMENT SITE | FOR LEASE

 <p>475 Pim St.</p>	--	--	CONTACT US	CONTACT US	IMMEDIATE	Development opportunity located on central Sault Ste. Marie's commercial strip.
---	----	----	------------	------------	-----------	---


SUDBURY, ON | RETAIL AND RESTAURANT SPACE | FOR LEASE

ADDRESS	UNIT	AREA	MINIMUM RENT	ADDITIONAL RENT	AVAILABILITY	COMMENTS
 747 Notre Dame Ave.	103	5,129 SF	\$20.00/SF	\$9.41/SF	IMMEDIATE	Large nationally anchored retail space on a major retail/traffic corridor in central Sudbury.

SUDBURY, ON | DEVELOPMENT SITE | FOR LEASE

 747 Notre Dame Ave.	PAD	1,800 - 5,000 SF.	CONTACT US	CONTACT US	IMMEDIATE	POTENTIAL PAD SITE available, ranging from 1,800-5,000 SF. with drive-through option, in Central Sudbury, in plaza anchored by national tenants.
 799 Notre Dame Ave.	PAD	1,000 - 3,500 SF.	CONTACT US	CONTACT US	IMMEDIATE	POTENTIAL PAD SITE available, ranging from 1,000-3,500 SF. with drive-through option, in Central Sudbury, in plaza anchored by national tenants.

BANCROFT, ON | DEVELOPMENT SITE | FOR LEASE

ADDRESS	UNIT	AREA	MINIMUM RENT	ADDITIONAL RENT	AVAILABILITY	COMMENTS
 <p>315 Hastings St. N.</p>	--	UP TO 8,000 SF	CONTACT US	CONTACT US	IMMEDIATE	Development opportunity on busy regional commercial strip already hosting national tenants such as the LCBO, Canadian Tire, and Foodland.