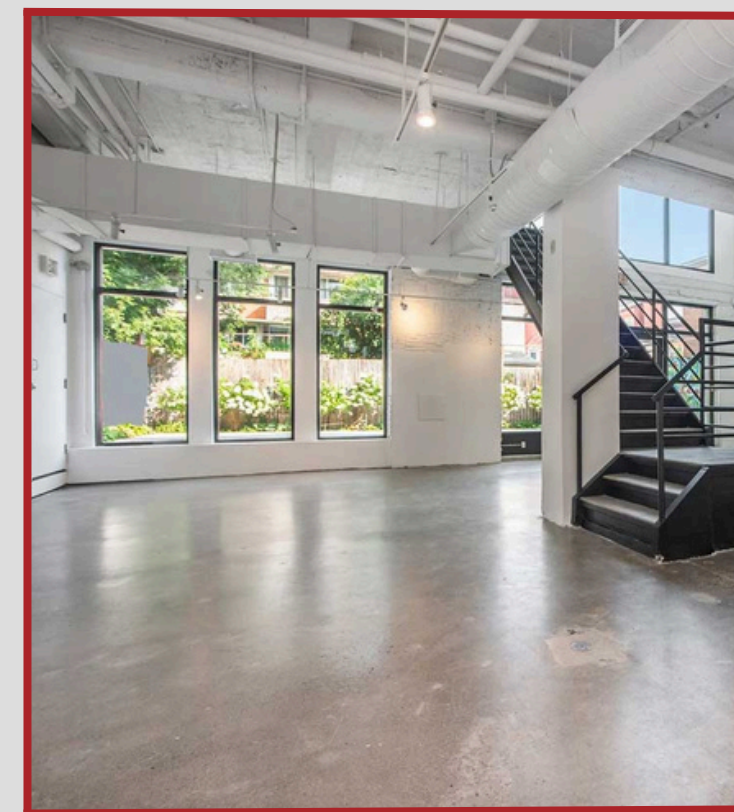


Available Properties



OTTAWA, ON | OFFICE FLEX | FOR LEASE

ADDRESS	UNIT	APPROX. AREA	MINIMUM RENT	ADDITIONAL RENT	AVAILABILITY	COMMENTS
 222 Somerset St. W.	--	851 - 6,660 SF	\$13.00 - \$25.00/SF	\$18.43/SF	IMMEDIATE	Multiple office units available in the Golden Triangle. Located between Metcalfe and Elgin with access to in-building fitness center.
 1680-1690 Woodward Dr.	208 211	1,559 SF 615 SF	\$3,900/MONTH \$1,500/MONTH	-- --	IMMEDIATE APRIL 2026	Customizable offices close to HWY 417.
 18 Byward Market Square	300	2,655 SF	\$5,500/MONTH	--	FEBRUARY 2027	Bright, spacious third-floor unit with an open layout and expansive windows, this space is flooded with natural light.


OTTAWA, ON | RETAIL SPACE | FOR LEASE

ADDRESS	UNIT	APPROX. AREA	MINIMUM RENT	ADDITIONAL RENT	AVAILABILITY	COMMENTS
 <p>1301 Wellington St. W.</p>	--	2,068 SF	\$6,500/MONTH	\$22.69/SF	MAY 2026	“Centre-ice” retail space available on Wellington with 47 feet of frontage.
 <p>1307 Wellington St. W.</p>	--	758 SF	\$4,000/MONTH	--	IMMEDIATE	Street level retail space fronting on Wellington Street.
 <p>1309 Wellington St. W.</p>	--	702 SF	\$4,000/MONTH	--	IMMEDIATE	Street level retail space fronting on Wellington Street.


OTTAWA, ON | RETAIL SPACE | FOR LEASE

ADDRESS	UNIT	APPROX. AREA	MINIMUM RENT	ADDITIONAL RENT	AVAILABILITY	COMMENTS
 <p>85 Murray St.</p>	--	3,018 SF	\$35/SF	\$14.31/SF	MARCH 2026	Bright retail space located in the heart of Ottawa's ByWard Market.
 <p>101 Murray St.</p>	--	Ground Floor 2,696 SF Mezzanine 664 SF	\$9,000/MONTH	\$16.87/SF	IMMEDIATE	Bright retail space with a large back patio located in the heart of Ottawa's ByWard Market.


OTTAWA, ON | INDUSTRIAL SPACE | FOR LEASE

 <p>1546 Chatelain Ave.</p>	--	2,841 SF	\$5,500/MONTH	--	IMMEDIATE	Split-level industrial space offering expansive storage, with overhead garage door.
-----------------------------------------------------------------------------------------------------------------------	----	----------	---------------	----	-----------	-------------------------------------------------------------------------------------


SAULT STE. MARIE, ON | RETAIL | FOR SALE OR LEASE

ADDRESS	UNIT	APPROX. AREA	MINIMUM RENT	ADDITIONAL RENT	AVAILABILITY	COMMENTS
 <p>475 Pim St.</p>	--	35,161 SF	CONTACT US	CONTACT US	IMMEDIATE	Large commercial building located in the heart of Sault Ste. Marie's commercial strip, with ample parking.


SAULT STE. MARIE, ON | DEVELOPMENT SITE | FOR SALE OR LEASE

 <p>475 Pim St.</p>	--	--	CONTACT US	CONTACT US	IMMEDIATE	Development opportunity located in the heart of Sault Ste. Marie's commercial strip.
--------------------------------------------------------------------------------------------------------------	----	----	------------	------------	-----------	--------------------------------------------------------------------------------------

HAMPTON, NB | DEVELOPMENT SITE | FOR SALE OR LEASE

 <p>110 Main St.</p>	--	--	CONTACT US	CONTACT US	IMMEDIATE	Development opportunity located in the south end of the Town of Hampton. Next to Hampton Mall and national retailers.
----------------------------------------------------------------------------------------------------------------	----	----	------------	------------	-----------	-----------------------------------------------------------------------------------------------------------------------

BANCROFT, ON | DEVELOPMENT SITE | FOR LEASE

ADDRESS	UNIT	APPROX. AREA	MINIMUM RENT	ADDITIONAL RENT	AVAILABILITY	COMMENTS
 315 Hastings St. N.	--	UP TO 8,000 SF	CONTACT US	CONTACT US	IMMEDIATE	Development opportunity on busy regional commercial strip already hosting national tenants such as the LCBO, Canadian Tire, and Foodland.