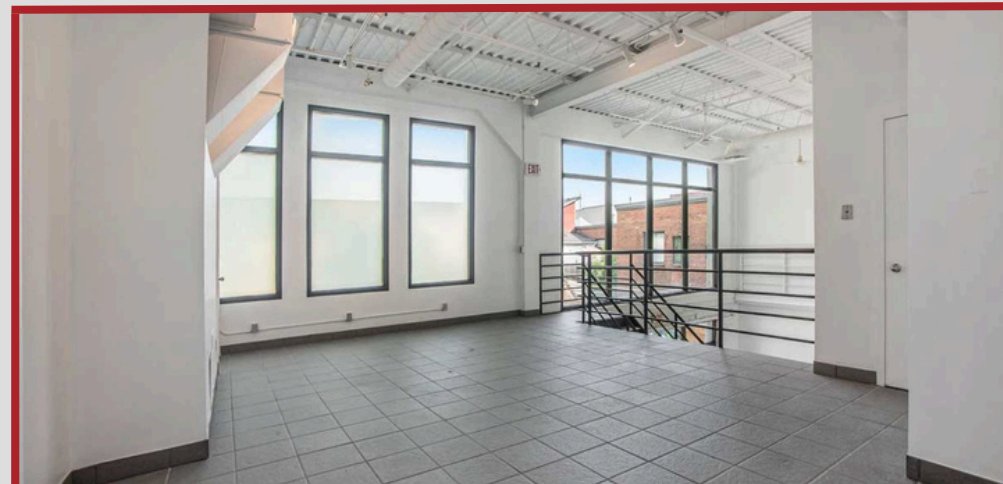


# Available Properties





## OTTAWA, ON | OFFICE FLEX | FOR LEASE


ADDRESS	UNIT	APPROX. AREA	MINIMUM RENT	ADDITIONAL RENT	AVAILABILITY	COMMENTS
 <b>222 Somerset St. W.</b>	100	2,296 SF	\$25.00/SF	\$18.43/SF	IMMEDIATE	Multiple office units available in the Golden Triangle. Located between Metcalfe and Elgin with access to in-building fitness center.
	200	5,012 SF	\$13.00/SF	\$18.43/SF	IMMEDIATE	
	300	6,665 SF	\$13.00/SF	\$18.43/SF	IMMEDIATE	
	405	865 SF	\$13.00/SF	\$18.43/SF	JULY 2025	
	600	2,755 SF	\$13.00/SF	\$18.43/SF	IMMEDIATE	
	701	2,994 SF	\$17.00/SF	\$18.43/SF	IMMEDIATE	
 <b>1680-1690 Woodward Dr.</b>	208	2,661 SF	\$12/SF	\$13.69/SF	IMMEDIATE	Customizable offices close to HWY 417.
	211	615 SF	CONTACT US	CONTACT US	APRIL 2026	
 <b>105 Murray St.</b>	105	3,271 SF	\$15/SF	\$16.47/SF	IMMEDIATE	Multipurpose studio/office space.



OTTAWA, ON | RETAIL SPACE | FOR LEASE

ADDRESS	UNIT	APPROX. AREA	MINIMUM RENT	ADDITIONAL RENT	AVAILABILITY	COMMENTS
 1305 Wellington St. W.	--	1,189 SF	\$4,000/MONTH	\$25.54/SF	APRIL 2026	Street level retail space fronting on Wellington Street.
 101 Murray St.	--	3,360 SF	\$9,000/MONTH	\$17.16/SF	IMMEDIATE	Bright retail space with a large back patio located in the heart of Ottawa's ByWard Market.
 105 Clarence St.	--	--	--	--	LEASED	--



OTTAWA, ON | RETAIL SPACE | FOR LEASE

ADDRESS	UNIT	APPROX. AREA	MINIMUM RENT	ADDITIONAL RENT	AVAILABILITY	COMMENTS
 <b>2701 St. Joseph Blvd.</b>	4	1,337 SF	\$31/SF	\$19.21	APRIL 2026	Retail space in fully leased plaza. Great visibility and parking.

OTTAWA, ON | INDUSTRIAL SPACE | FOR LEASE


 <b>2600 Sheffield Road</b>	--	6,400 SF	\$15/SF	\$7.84	APRIL 2026	Expansive storage, one overhead garage door on the back of the unit, approximately 16ft. high ceilings
 <b>1546 Chatelain Ave.</b>	--	2,841 SF	\$5,500/MONTH	--	JUNE 2025	Split-level industrial space offers expansive storage, and overhead garage door.




MARITIMES   INDUSTRIAL SPACE   FOR LEASE						
ADDRESS	UNIT	APPROX. AREA	MINIMUM RENT	ADDITIONAL RENT	AVAILABILITY	COMMENTS
 <p><b>Maritimes</b></p>	--	50,000 SF	CONTACT US	CONTACT US	CONTACT US	The building sits on approximately 4 acres of paved and landscaped land and benefits from a rail siding. 20-foot-high ceilings, a loading dock with two overhead doors, and a grade-level loading dock.
BANCROFT, ON   DEVELOPMENT SITE   FOR LEASE						
 <p><b>315 Hastings St. N.</b></p>	--	UP TO 8,000 SF	CONTACT US	CONTACT US	IMMEDIATE	Development opportunity on busy regional commercial strip already hosting national tenants such as the LCBO, Canadian Tire, and Foodland.
BRANTFORD, ON   RETAIL   FOR LEASE						
 <p><b>245-265 King George Road</b></p>	104	3,029 SF	\$35/SF	\$12.63/SF	JANUARY 2026	North of Highway 403, this plaza sits on a major commercial corridor. Located at Northridge Plaza. With strong national tenants.




### SAULT STE. MARIE, ON | RETAIL | FOR LEASE

ADDRESS	UNIT	APPROX. AREA	MINIMUM RENT	ADDITIONAL RENT	AVAILABILITY	COMMENTS
 <b>475 Pim St.</b>	--	35,161 SF	TBD	TBD	IMMEDIATE	Large commercial building located on Sault Ste. Marie's commercial strip with ample parking.

### SAULT STE. MARIE, ON | DEVELOPMENT SITE | FOR LEASE


 <b>475 Pim St.</b>	--	--	CONTACT US	CONTACT US	IMMEDIATE	Development opportunity located on central Sault Ste. Marie's commercial strip.
---	----	----	------------	------------	-----------	---

### HAMPTON, NB | DEVELOPMENT SITE | FOR SALE OR FOR LEASE

 <b>110 Main St.</b>	--	--	CONTACT US	CONTACT US	IMMEDIATE	Development opportunity located in the south end of the Town of Hampton. Next to Hampton Mall and national retailers.
---	----	----	------------	------------	-----------	---



SUDBURY, ON | RETAIL AND RESTAURANT SPACE | FOR LEASE

ADDRESS	UNIT	APPROX. AREA	MINIMUM RENT	ADDITIONAL RENT	AVAILABILITY	COMMENTS
 <b>747 Notre Dame Ave.</b>	103	5,129 SF	\$20.00/SF	\$10.80/SF	CONDITIONAL	Large nationally anchored retail space on a major retail/traffic corridor in central Sudbury.