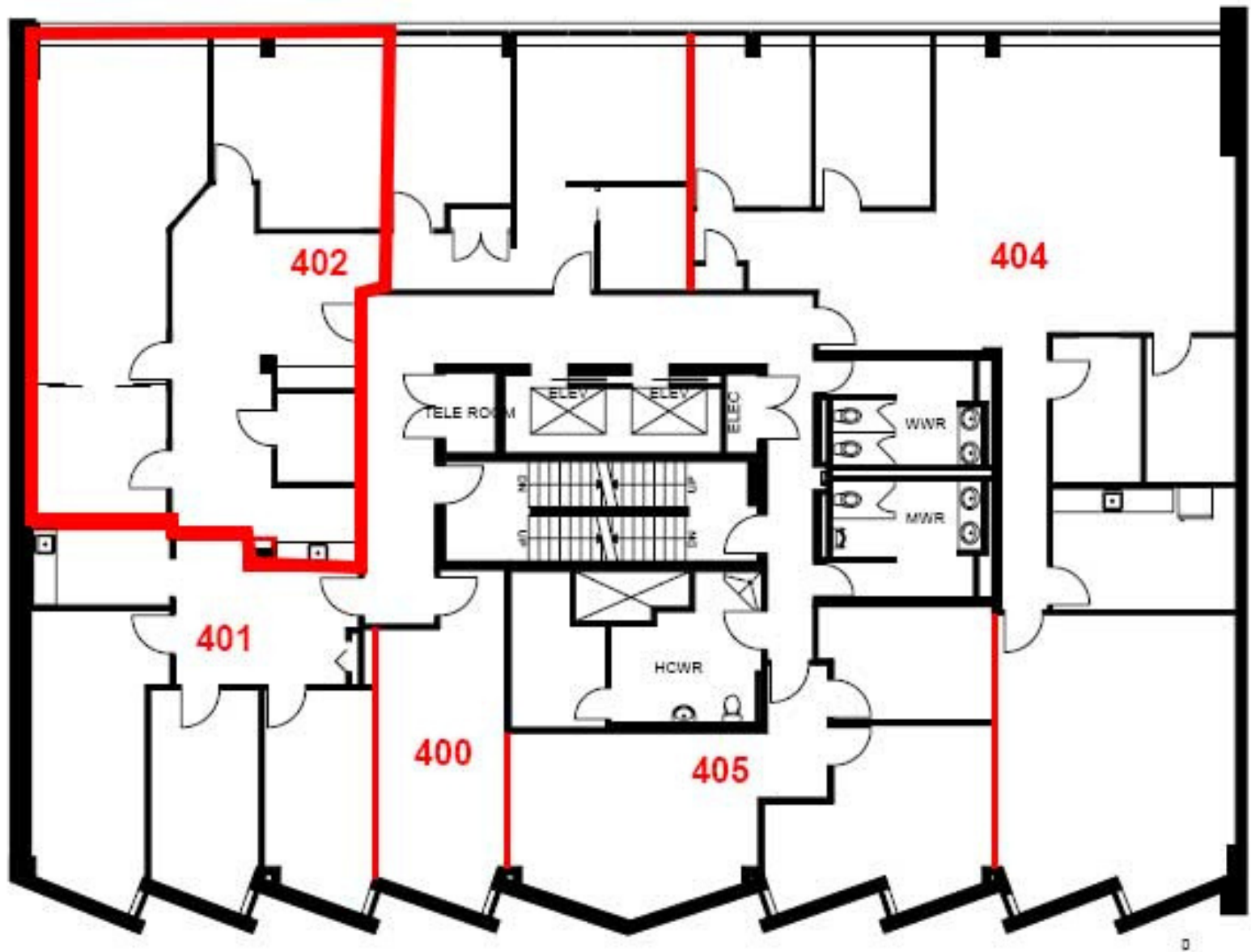




Centrally located one block from Elgin St., this 1,416 sq. ft. turn-key corner unit is ready for occupancy. The unit has two large semi-private office spaces, a boardroom, reception, seating area, storage room, and an updated kitchenette. The building features recently updated common washrooms, access to the on-site fitness room, and is in proximity to OC Transpo.

## Unit Features

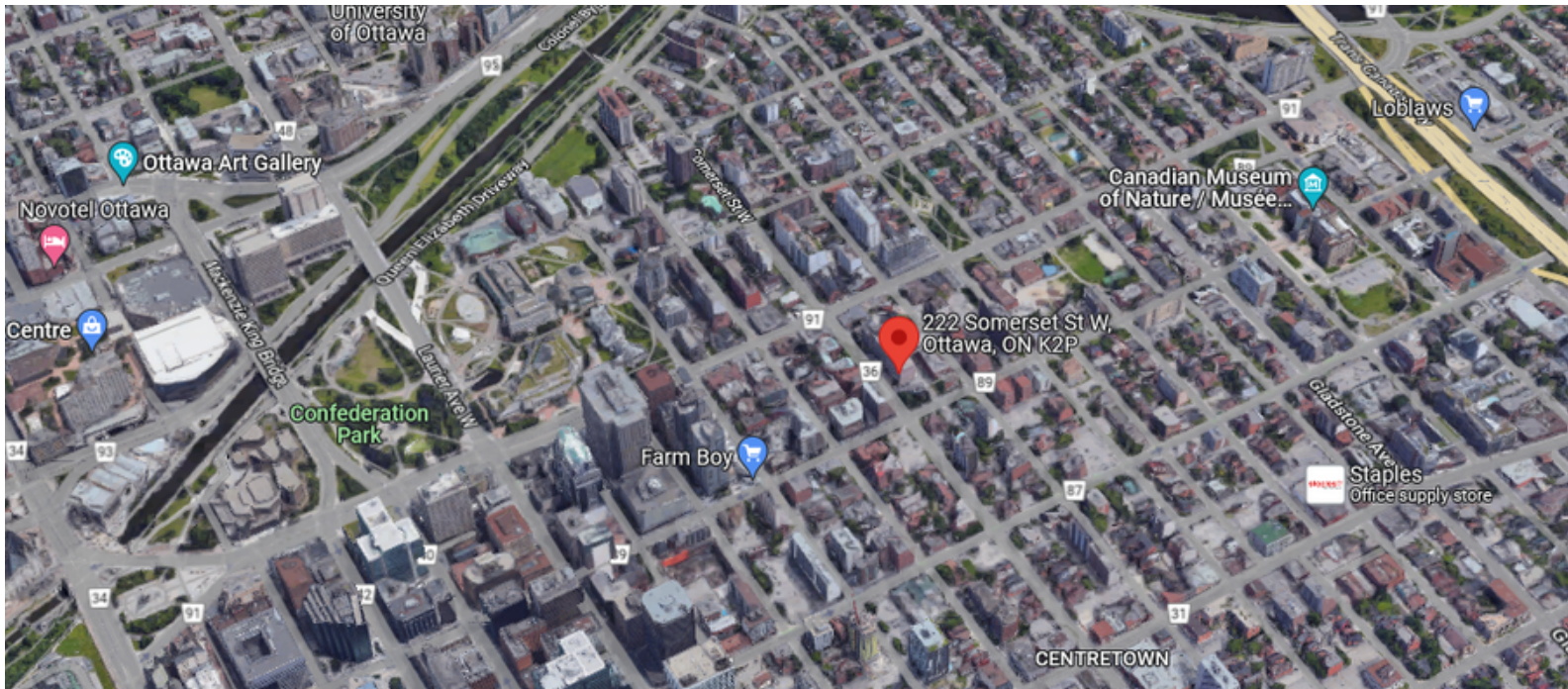
- Natural light
- Elevator access
- Kitchenette equipped with a dishwasher and mini fridge



THE ATTACHED DRAWINGS ARE PROVIDED FOR INFORMATION PURPOSES ONLY AND SHOULD NOT BE RELIED UPON. THE LANDLORD SHALL NOT BE HELD RESPONSIBLE FOR THE PURPOSE OF THE TENANT'S WORK AND SPACE PLANNING.



1,416 SQ. FT. - 402 - 222 Somerset St. W. - Ottawa, ON - Office Space for Lease



**THE PROPERTIES GROUP MANAGEMENT LTD.**  
236 Metcalfe Street, Ottawa, ON K2P 1R3  
(613) 369-5486 / [leasing@prpgrp.com](mailto:leasing@prpgrp.com) / [www.thepropertiesgroup.ca](http://www.thepropertiesgroup.ca)

Information contained herein is such and does not form any part of any future contract. This offering has been obtained from sources that we deem reliable but is not warranted and may be altered or withdrawn at any time.