

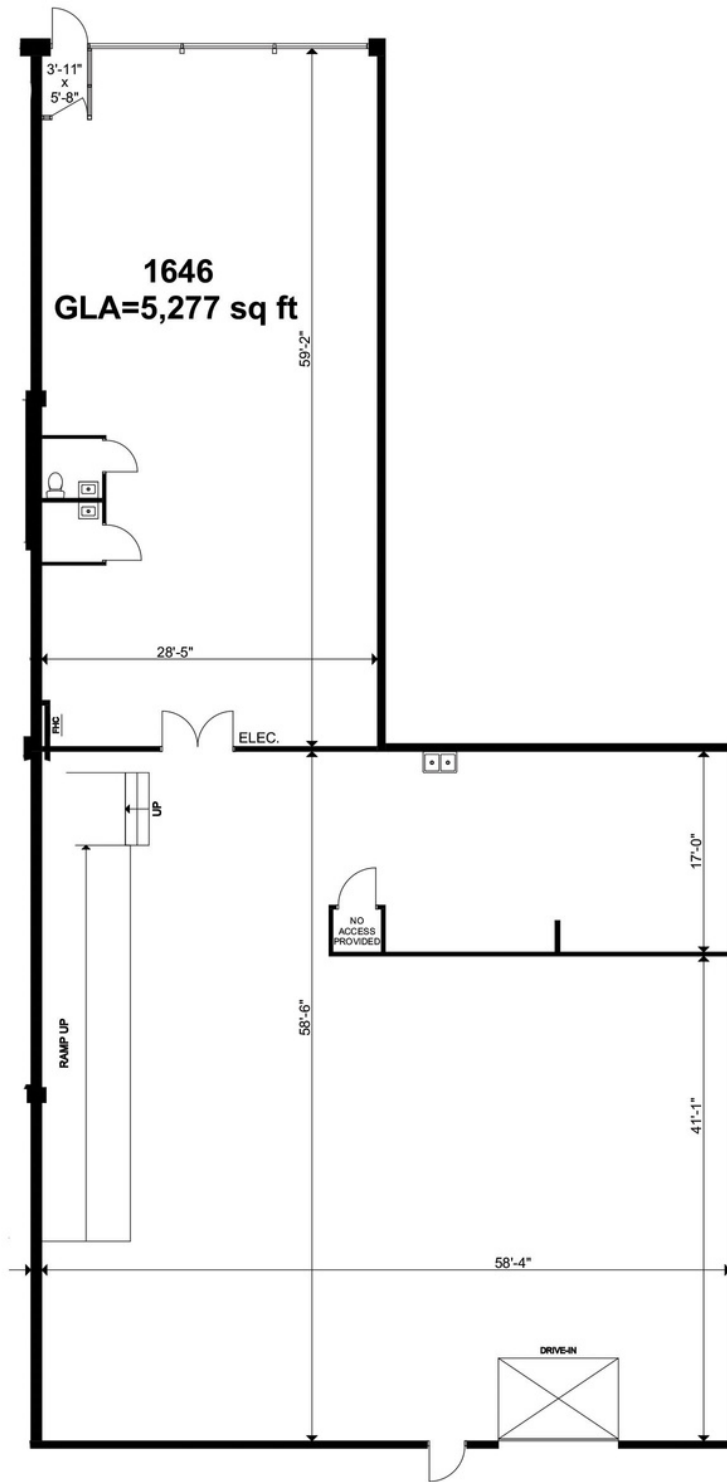


Your Sign Here

Centrally located in the Woodward Industrial Park close to Carling Ave. and Hwy 417, this flexible ground-floor retail-industrial unit offers street frontage onto Woodward Dr. with signage opportunities. This unit has 16' ceilings, an at-grade loading door with 14' clearance, and an additional rear entrance. Available February 2024.

Unit Features

- Central location
- Near transportation
- At-grade loading dock
- 16' ceilings



THE ATTACHED DRAWINGS ARE PROVIDED FOR INFORMATION PURPOSES ONLY AND SHOULD NOT BE RELIED UPON. THE LANDLORD SHALL NOT BE HELD RESPONSIBLE FOR THE PURPOSE OF THE TENANT'S WORK AND SPACE PLANNING.



THE PROPERTIES GROUP MANAGEMENT LTD.
236 Metcalfe Street, Ottawa, ON K2P 1R3
(613) 369-5486 / leasing@prpgrp.com / www.thepropertiesgroup.ca