

# FOR LEASE



**222 Somerset St. W.  
OTTAWA, ONTARIO**



# 222 Somerset St. W. OTTAWA, ONTARIO

UNIT	AREA	MINIMUM RENT	ADDITIONAL RENT	AVAILABILITY
100	2,296 SF	\$25.00/SF	\$19.72/SF	NOVEMBER 2023
200	5,012 SF	\$13.00/SF	\$19.72/SF	IMMEDIATE
300	6,665 SF	\$13.00/SF	\$19.72/SF	IMMEDIATE
402	1,416 SF	\$13.00/SF	\$19.72/SF	IMMEDIATE
600	6,673 SF	\$13.00/SF	\$19.72/SF	IMMEDIATE





222 Somerset St. W.  
OTTAWA, ONTARIO



\*Rendering



Unit 100

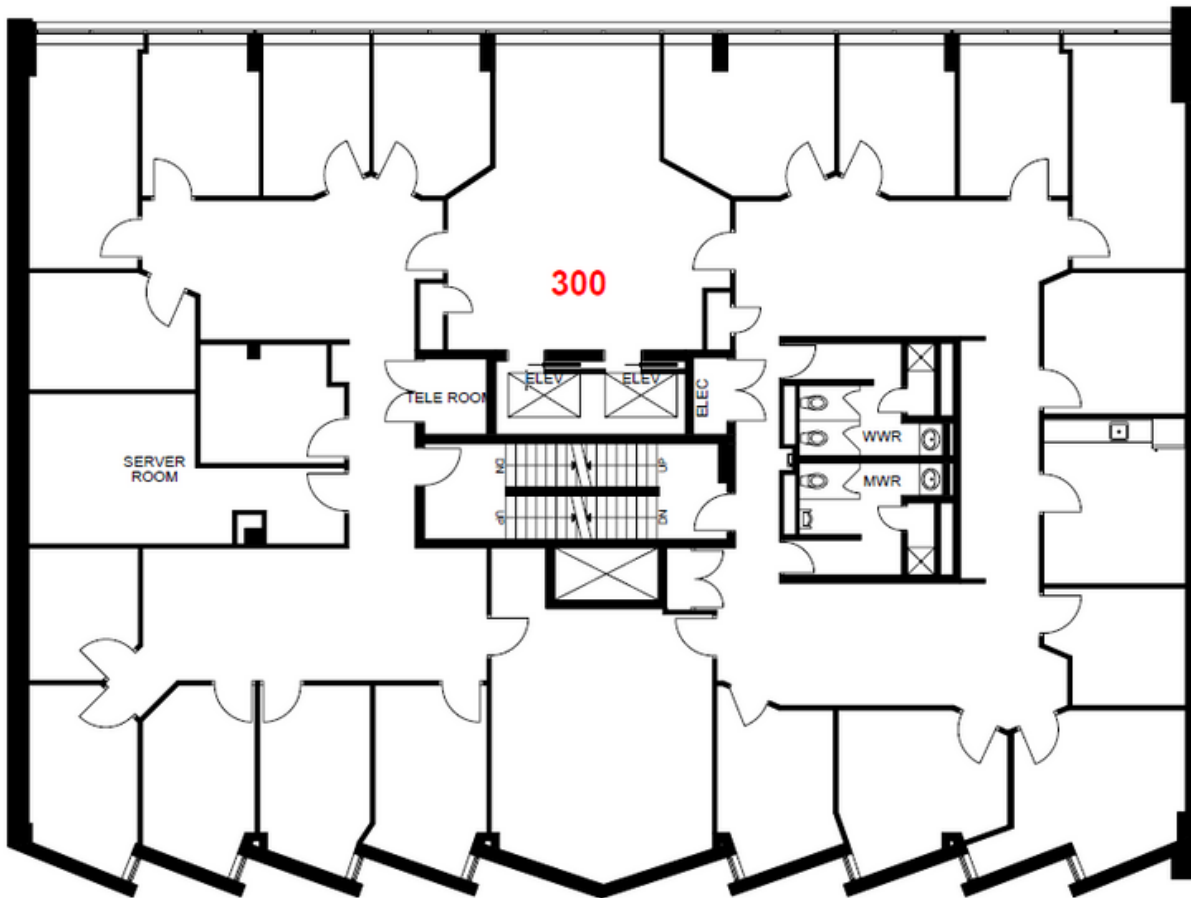


\*Rendering



222 Somerset St. W.  
OTTAWA, ONTARIO

## UNIT 300



THE ATTACHED DRAWINGS ARE PROVIDED FOR INFORMATION PURPOSES ONLY AND SHOULD NOT BE RELIED UPON. THE LANDLORD SHALL NOT BE HELD RESPONSIBLE FOR THE PURPOSE OF THE TENANT'S WORK AND SPACE PLANNING.

## UNIT OVERVIEW

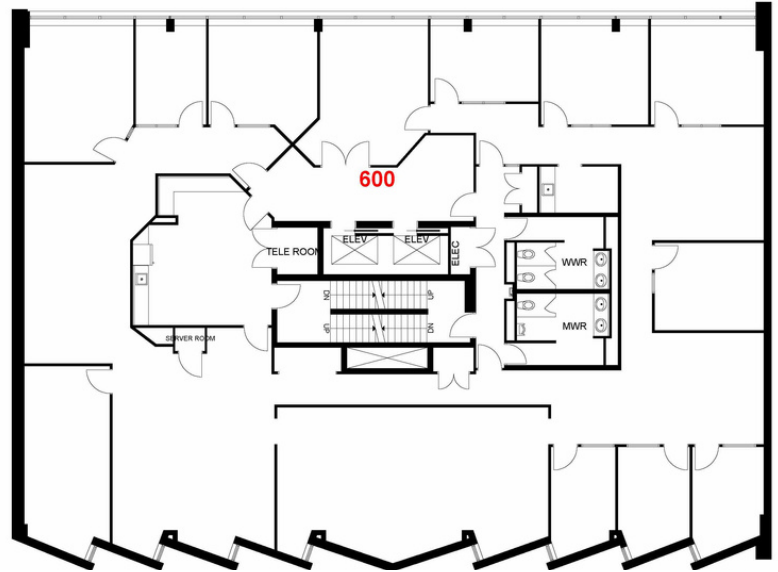
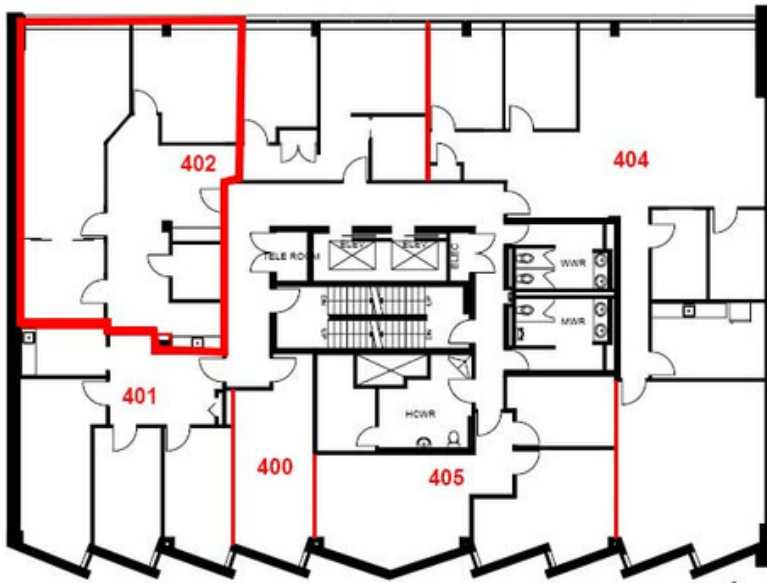
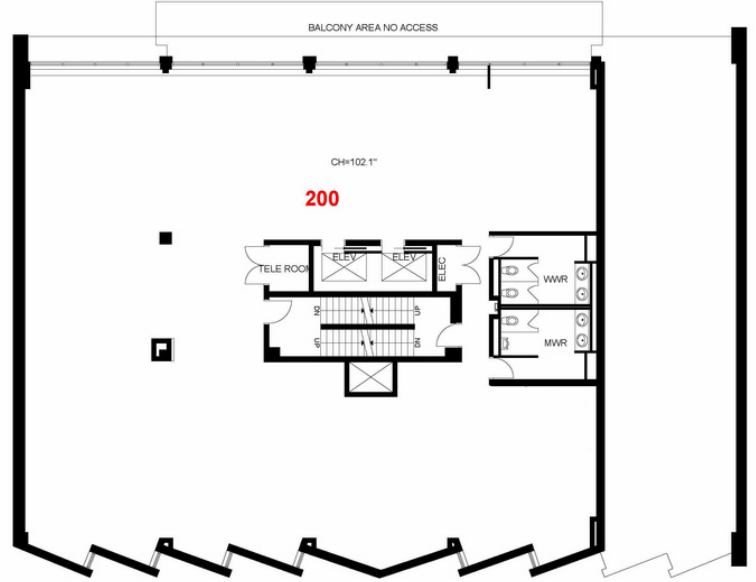
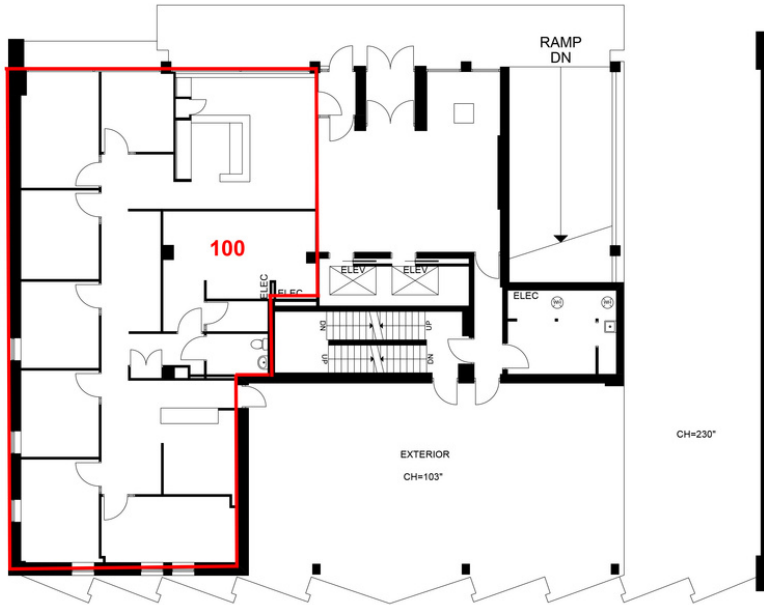
This 6,665 sq. ft. full-floor unit has wall-to-wall windows on its north side and is ready for your customized build-out. The current unit has built-out offices, washrooms, a server room, and the space and plumbing for a kitchen. The building features access to the on-site fitness room, and is in proximity to OC Transpo.

## UNIT HIGHLIGHTS

- Full floor unit
- Direct elevator access



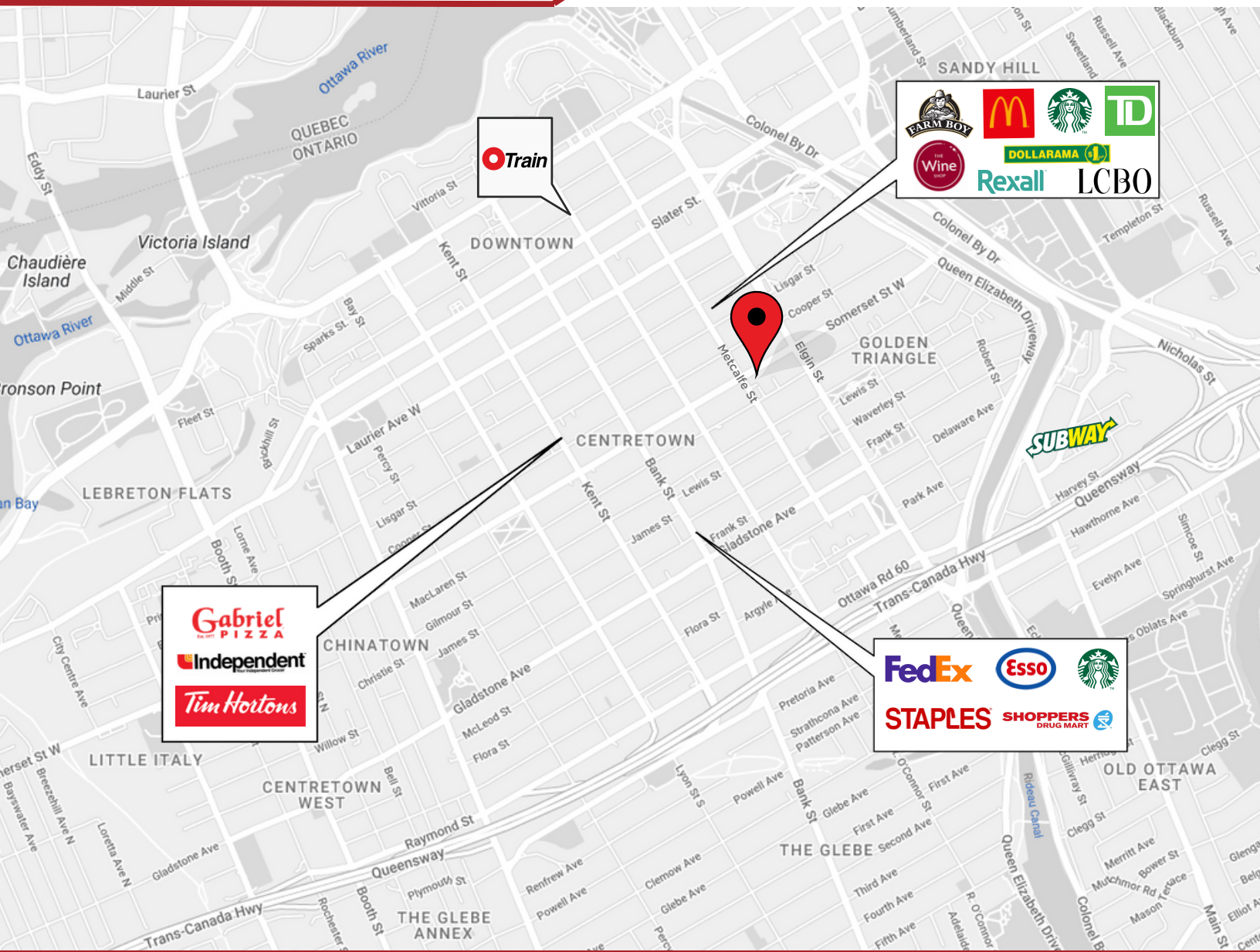
# 222 Somerset St. W. OTTAWA, ONTARIO



THE ATTACHED DRAWINGS ARE PROVIDED FOR INFORMATION PURPOSES ONLY AND SHOULD NOT BE RELIED UPON. THE LANDLORD SHALL NOT BE HELD RESPONSIBLE FOR THE PURPOSE OF THE TENANT'S WORK AND SPACE PLANNING.



222 Somerset St. W.  
OTTAWA, ONTARIO



## LOCATION DETAILS

- Public transit stop nearby
- Centrally located one block from Elgin St.
- Surrounded by amenities including retail shops, cafes, restaurants and pubs

Information contained herein has been obtained from sources that we deem to be reliable but is not warranted as such and does not form any part of any future contract. This offering may be altered or withdrawn at any time without notice.

**THE PROPERTIES GROUP MANAGEMENT LTD.**  
236 Metcalfe Street, Ottawa, ON K2P 1R3

**(613) 369-5635 / [leasing@prpgrp.com](mailto:leasing@prpgrp.com)**  
**[www.thepropertiesgroup.ca](http://www.thepropertiesgroup.ca)**