

# FOR LEASE



**Unit 103 - 747 Notre Dame Ave.  
SUDBURY, ONTARIO**





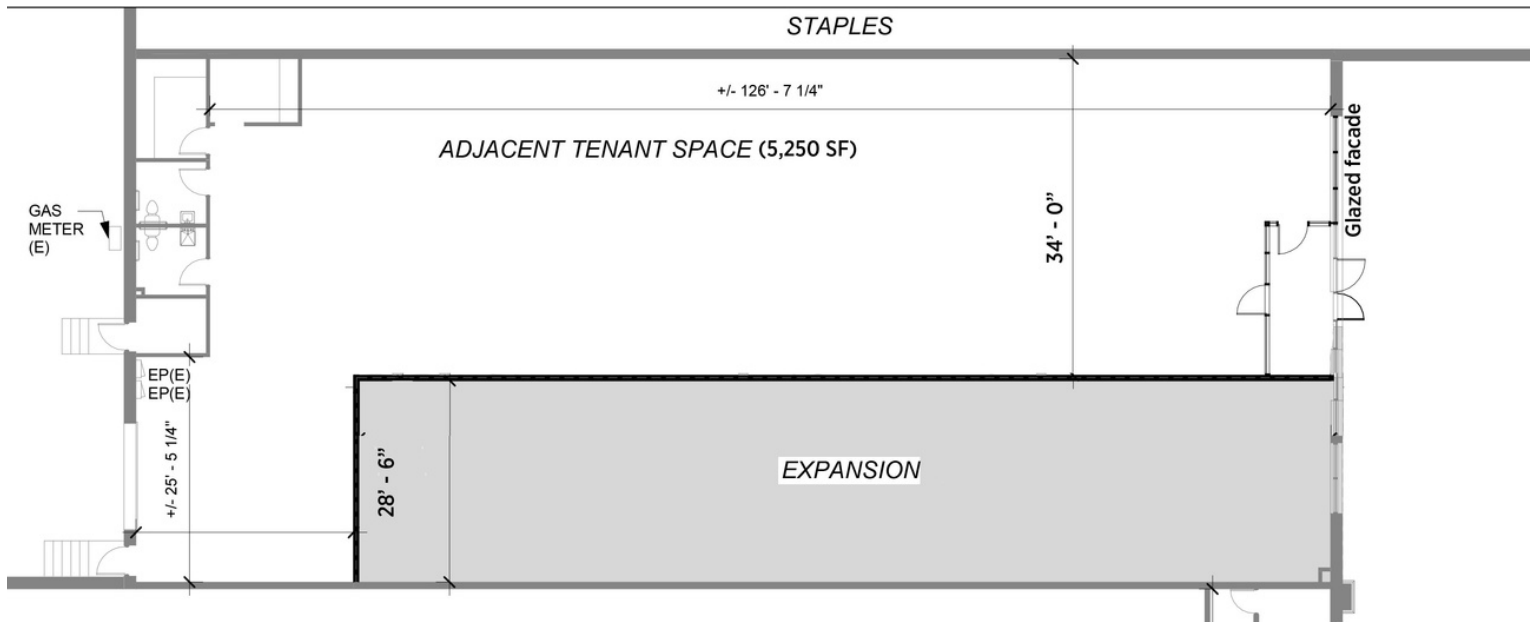
# Unit 103 - 747 Notre Dame Ave. SUDBURY, ONTARIO





Unit 103 - 747 Notre Dame Ave.  
SUDBURY, ONTARIO

## UNIT 103 - 5,250 square feet



THE ATTACHED DRAWINGS ARE PROVIDED FOR INFORMATION PURPOSES ONLY AND SHOULD NOT BE RELIED UPON. THE LANDLORD SHALL NOT BE HELD RESPONSIBLE FOR THE PURPOSE OF THE TENANT'S WORK AND SPACE PLANNING.

## UNIT OVERVIEW

This nationally anchored retail unit is located on Notre Dame Ave., a major retail/traffic corridor connecting New Sudbury in the North end, to the South end via Downtown. This centre is home to Value Village, Sleep Country, The Brick, Leon's, Staples, Napa Autoparts, and Dollarama. The unit provides great sight lines with over 60' of frontage, and can accommodate different uses.

## UNIT HIGHLIGHTS

- Glazed facade
- Drive-in Dock Door

## DEMOGRAPHICS\*

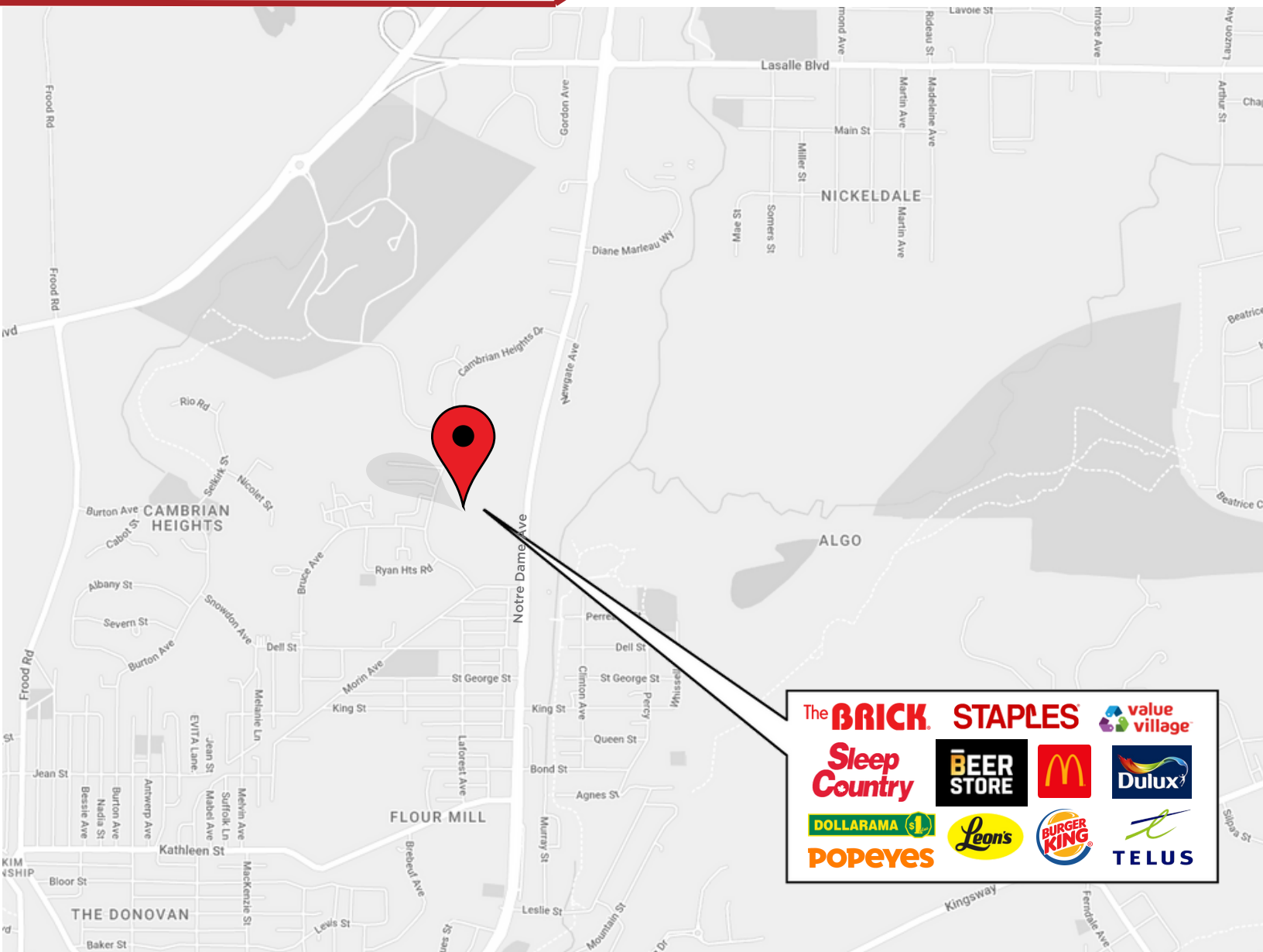
- Population: 166,000+
- Avg. Household Income\* \$137,430
- Traffic Count 33,000+ cars daily

\*Source: Statistic Canada, 2021 Census.





# Unit 103 - 747 Notre Dame Ave. SUDBURY, ONTARIO



## LOCATION DETAILS

- High visibility
- Centrally Located
- National tenant mix

Information contained herein has been obtained from sources that we deem to be reliable but is not warranted as such and does not form any part of any future contract. This offering may be altered or withdrawn at any time without notice.

**THE PROPERTIES GROUP MANAGEMENT LTD.**  
236 Metcalfe Street, Ottawa, ON K2P 1R3

**(613) 369-5635 / [leasing@prpgrp.com](mailto:leasing@prpgrp.com)**  
**[www.thepropertiesgroup.ca](http://www.thepropertiesgroup.ca)**