

FOR LEASE



Your Sign Here

**1646 Woodward Dr.
OTTAWA, ONTARIO**



1646 Woodward Dr.
OTTAWA, ONTARIO



*Rendering



1646

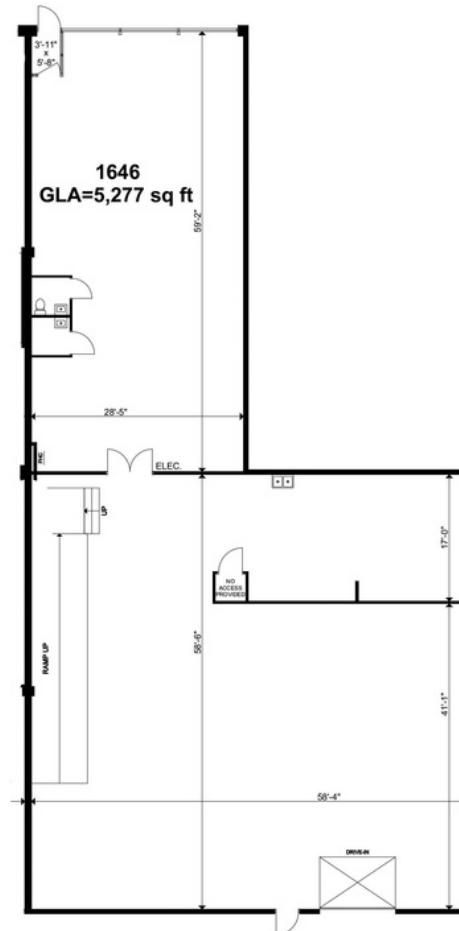


1646



1646 Woodward Dr.
OTTAWA, ONTARIO

UNIT 1646 - 5,277 square feet



THE ATTACHED DRAWINGS ARE PROVIDED FOR INFORMATION PURPOSES ONLY AND SHOULD NOT BE RELIED UPON. THE LANDLORD SHALL NOT BE HELD RESPONSIBLE FOR THE PURPOSE OF THE TENANT'S WORK AND SPACE PLANNING.

UNIT OVERVIEW

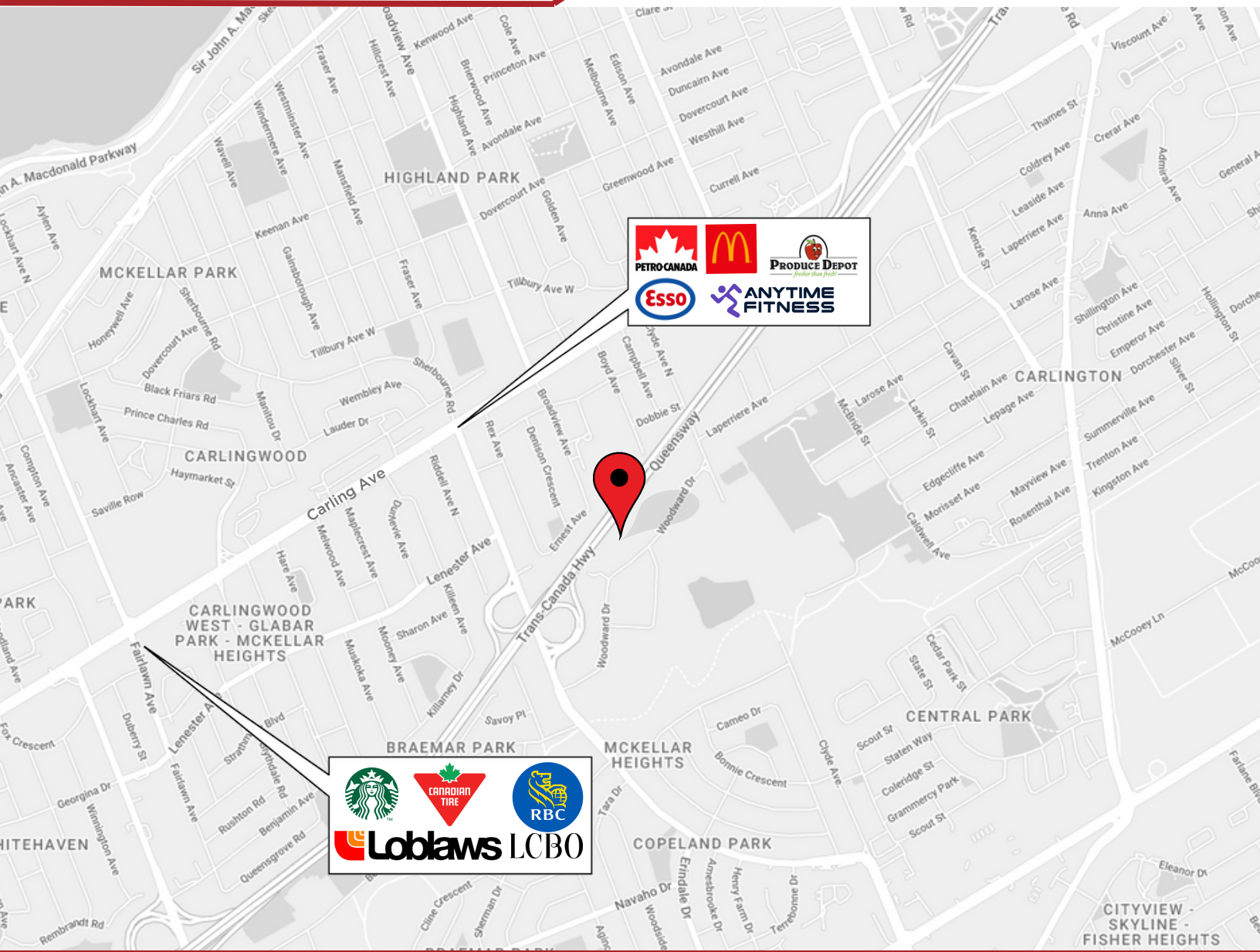
Centrally located in the Woodward Industrial Park, close to Carling Ave. and Hwy 417, this flexible ground-floor retail-industrial unit offers street frontage onto Woodward Dr. with signage opportunities. This unit has 16' ceilings, an at-grade loading door with 14' clearance, and an additional rear entrance. Available February 2024.

UNIT HIGHLIGHTS

- At-grade loading dock with 14' clearance
- 16' ceiling heights



1646 Woodward Dr.
OTTAWA, ONTARIO



LOCATION DETAILS

- Public transit stop nearby
- Close to Carling Ave. and Hwy 417
- Centrally located in the Woodward Industrial Park

Information contained herein has been obtained from sources that we deem to be reliable but is not warranted as such and does not form any part of any future contract. This offering may be altered or withdrawn at any time without notice.

THE PROPERTIES GROUP MANAGEMENT LTD.
236 Metcalfe Street, Ottawa, ON K2P 1R3

(613) 369-5486 / leasing@prpgrp.com
www.thepropertiesgroup.ca