

# FOR SALE OR LEASE



**222 Somerset St. W.  
OTTAWA, ONTARIO**



# FOR SALE

## 222 Somerset St. W. OTTAWA, ONTARIO

UNIT	AREA	SALE PRICE	CONDOMINIUM FEE	AVAILABILITY
100	2,296 SF	\$1,299,000	\$2,025/MONTH	IMMEDIATE
200	5,012 SF	\$1,299,000	\$3,627/MONTH	IMMEDIATE
300	6,665 SF	\$1,599,000	\$5,100/MONTH	IMMEDIATE
600	2,775 SF	\$775,000	\$2,125/MONTH	IMMEDIATE
701	2,994 SF	\$1,050,000	\$2,211/MONTH	IMMEDIATE



**THE PROPERTIES GROUP MANAGEMENT LTD.**  
236 Metcalfe Street, Ottawa, ON K2P 1R3

**(613) 369-5635 / [leasing@prpgrp.com](mailto:leasing@prpgrp.com)**  
**[www.thepropertiesgroup.ca](http://www.thepropertiesgroup.ca)**



# FOR LEASE

## 222 Somerset St. W. OTTAWA, ONTARIO

UNIT	AREA	MINIMUM RENT	ADDITIONAL RENT	AVAILABILITY
100	2,296 SF	\$25.00/SF	\$19.72/SF	IMMEDIATE
200	5,012 SF	\$13.00/SF	\$19.72/SF	IMMEDIATE
300	6,665 SF	\$13.00/SF	\$19.72/SF	IMMEDIATE
600	2,275 SF	\$13.00/SF	\$19.72/SF	IMMEDIATE
701	2,994 SF	\$17.00/SF	\$19.72/SF	IMMEDIATE



**THE PROPERTIES GROUP MANAGEMENT LTD.**  
236 Metcalfe Street, Ottawa, ON K2P 1R3

**(613) 369-5635 / [leasing@prpgrp.com](mailto:leasing@prpgrp.com)**  
**[www.thepropertiesgroup.ca](http://www.thepropertiesgroup.ca)**



222 Somerset St. W.  
OTTAWA, ONTARIO



\*Rendering



Unit 100

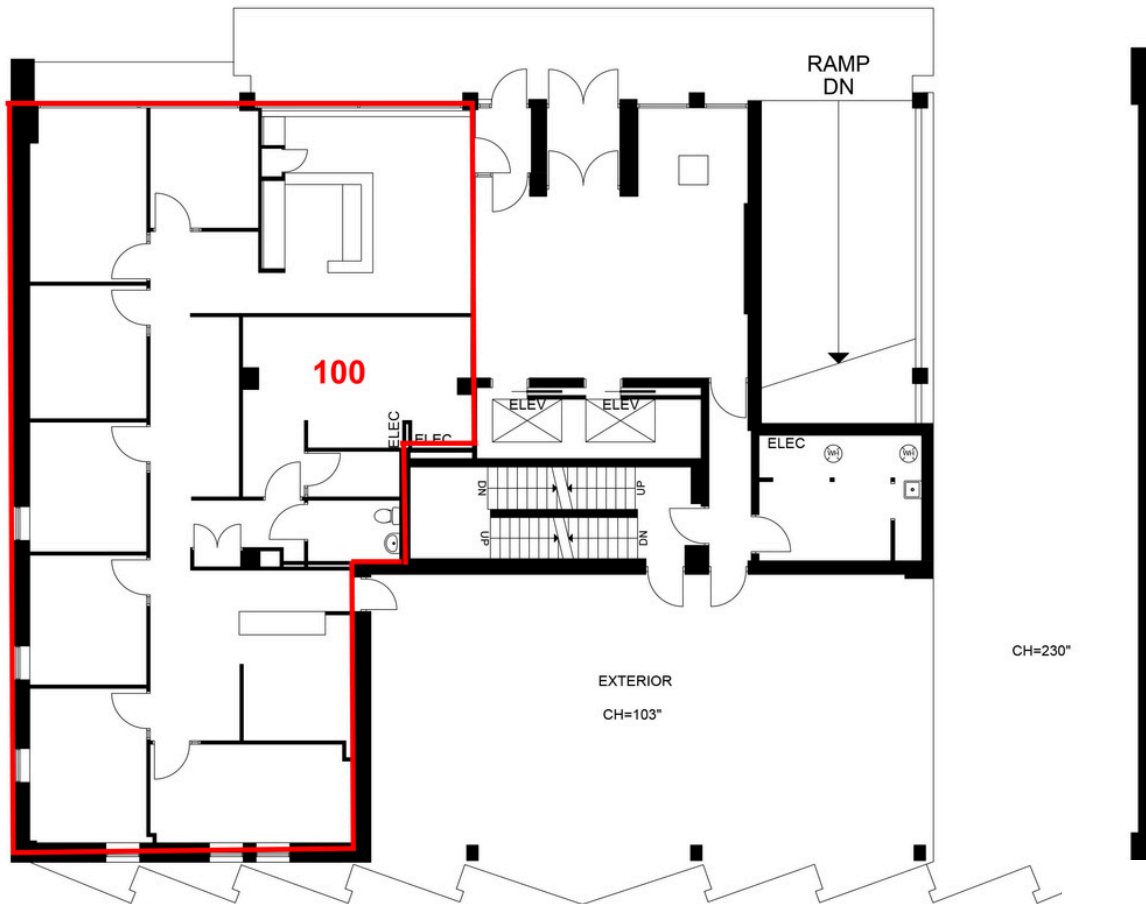


\*Rendering



222 Somerset St. W.  
OTTAWA, ONTARIO

## UNIT 100 - 2,296 square feet



THE ATTACHED DRAWING IS PROVIDED FOR INFORMATION PURPOSES ONLY AND SHOULD NOT BE RELIED UPON. THE LANDLORD SHALL NOT BE HELD RESPONSIBLE FOR THE PURPOSE OF THE TENANT'S WORK AND SPACE PLANNING.

## UNIT OVERVIEW

This ground-floor unit measures 2,296 sq. ft., is beautifully fixtured in move-in ready condition, and has great street visibility. The building benefits from an on-site fitness room and is in close proximity to OC Transpo.

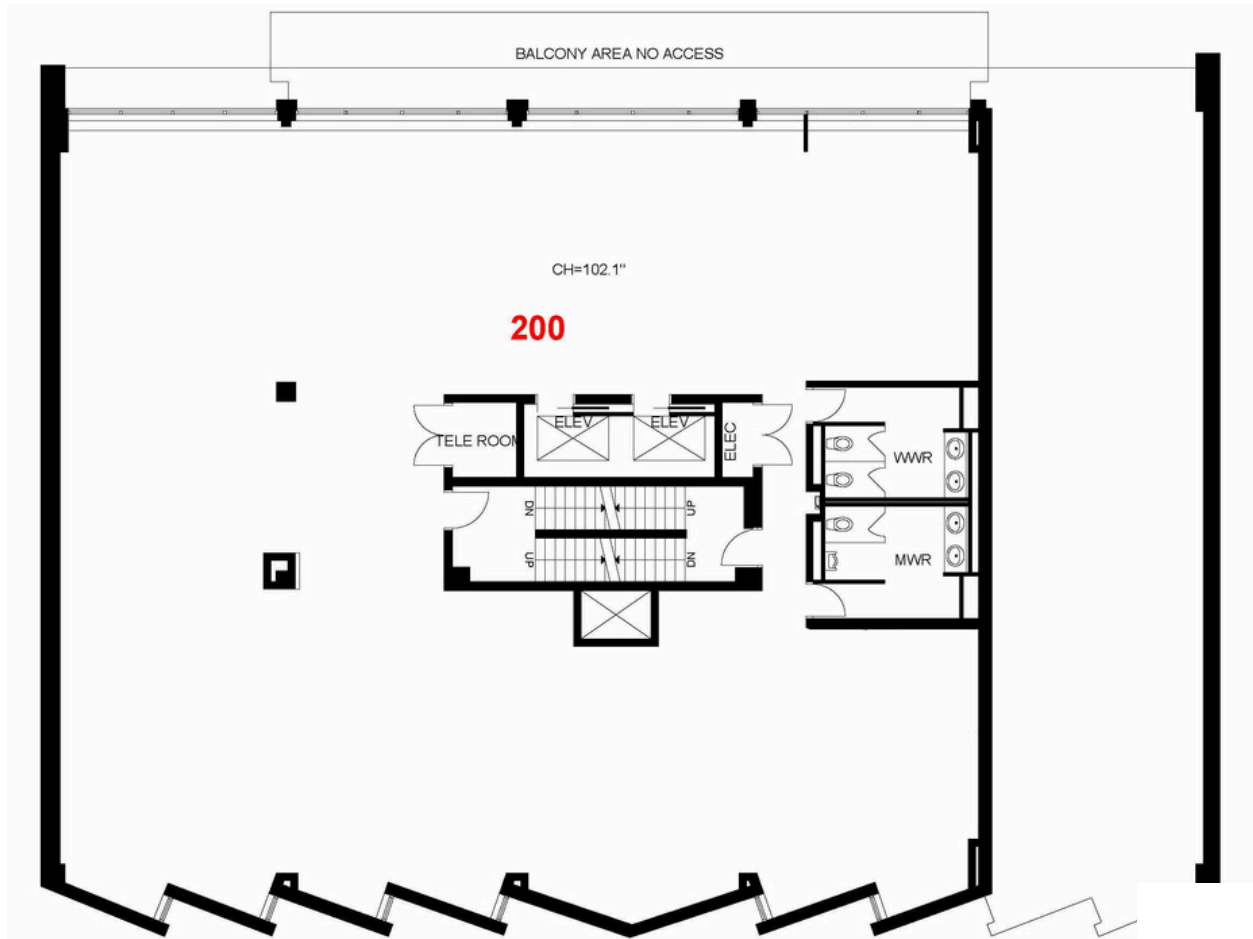
## UNIT HIGHLIGHTS

- Ground-floor unit
- Built-in reception area



222 Somerset St. W.  
OTTAWA, ONTARIO

## UNIT 200 - 5,012 square feet



THE ATTACHED DRAWING IS PROVIDED FOR INFORMATION PURPOSES ONLY AND SHOULD NOT BE RELIED UPON. THE LANDLORD SHALL NOT BE HELD RESPONSIBLE FOR THE PURPOSE OF THE TENANT'S WORK AND SPACE PLANNING.

### UNIT OVERVIEW

This 5,012 sq. ft. full-floor unit is in shell condition, has wall-to-wall windows on its north side, and is ready for your customized build-out. The building benefits from an on-site fitness room and is in close proximity to OC Transpo.

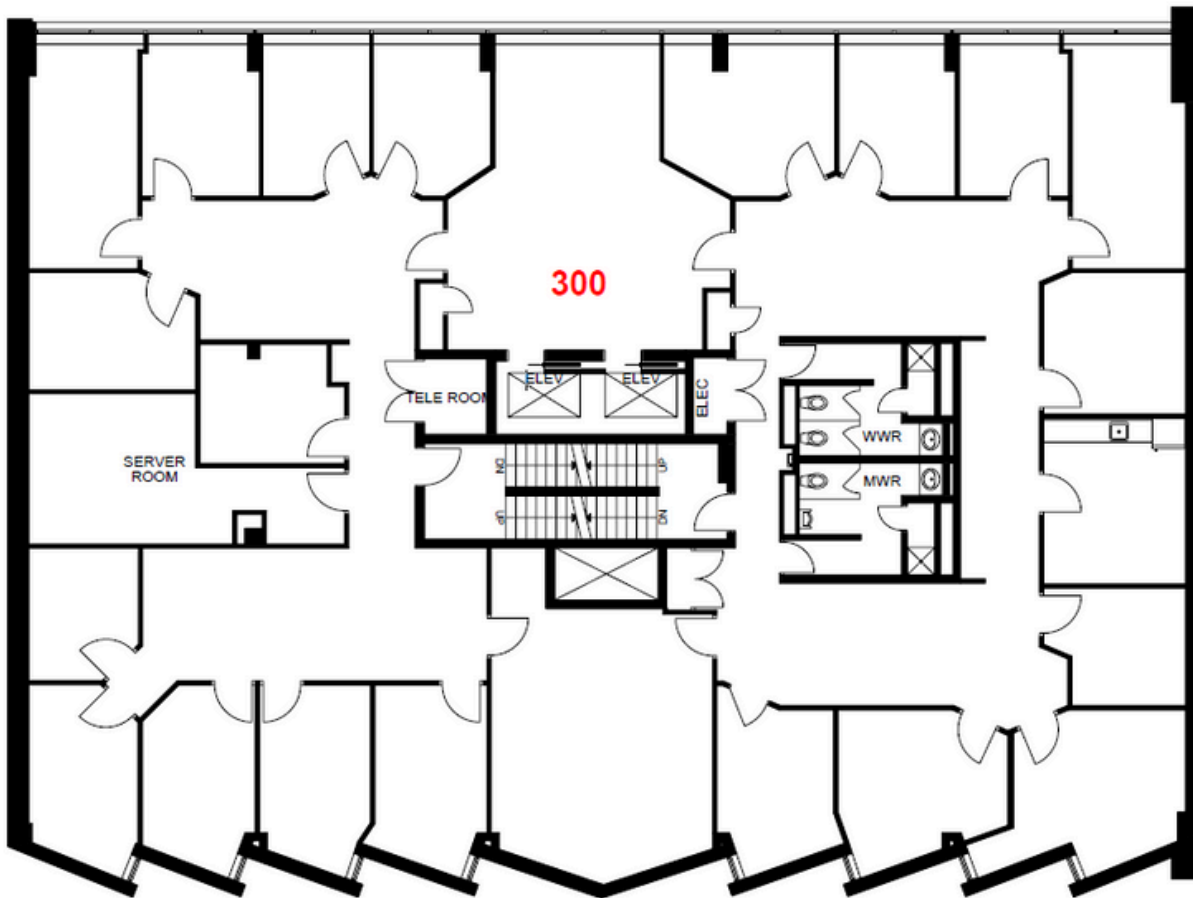
### UNIT HIGHLIGHTS

- Direct elevator access to unit
- Recently updated washrooms



222 Somerset St. W.  
OTTAWA, ONTARIO

## UNIT 300 - 6,665 square feet



THE ATTACHED DRAWING IS PROVIDED FOR INFORMATION PURPOSES ONLY AND SHOULD NOT BE RELIED UPON. THE LANDLORD SHALL NOT BE HELD RESPONSIBLE FOR THE PURPOSE OF THE TENANT'S WORK AND SPACE PLANNING.

### UNIT OVERVIEW

This 6,665 sq. ft. full-floor unit has wall-to-wall windows on its north side and is ready for your customized build-out. It currently has built-out offices, washrooms, a server room, and the space and plumbing for a kitchen. The building benefits from an on-site fitness room and is in close proximity to OC Transpo.

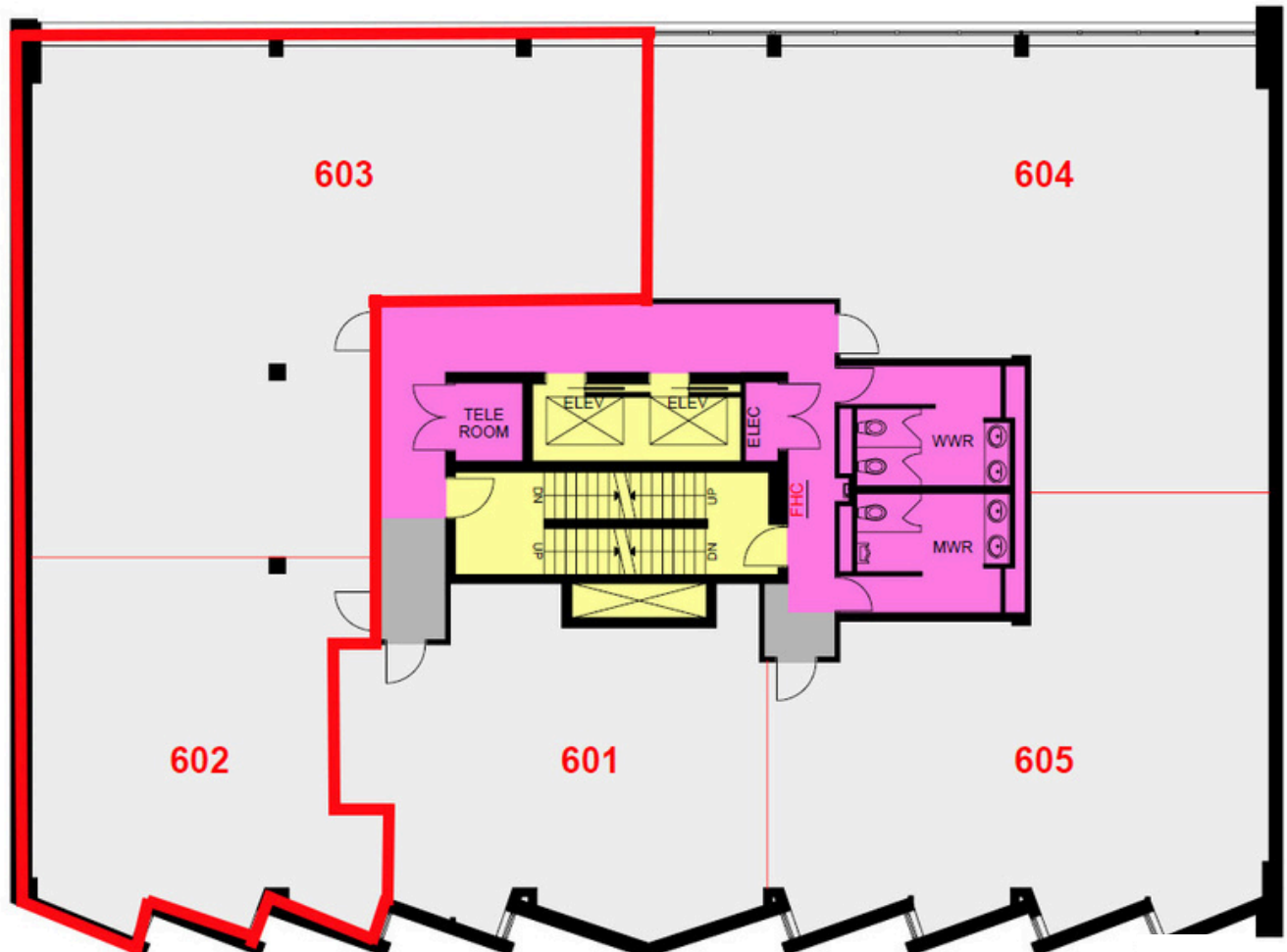
### UNIT HIGHLIGHTS

- Full floor unit
- Direct elevator access



222 Somerset St. W.  
OTTAWA, ONTARIO

## UNIT 600 - 2,755 square feet



THE ATTACHED DRAWING IS PROVIDED FOR INFORMATION PURPOSES ONLY AND SHOULD NOT BE RELIED UPON. THE LANDLORD SHALL NOT BE HELD RESPONSIBLE FOR THE PURPOSE OF THE TENANT'S WORK AND SPACE PLANNING.

### UNIT OVERVIEW

This 2,755 sq. ft. full-floor unit has wall-to-wall windows on its north side and is ready for your customized build-out. The building benefits from an on-site fitness room and is in close proximity to OC Transpo.

### UNIT HIGHLIGHTS

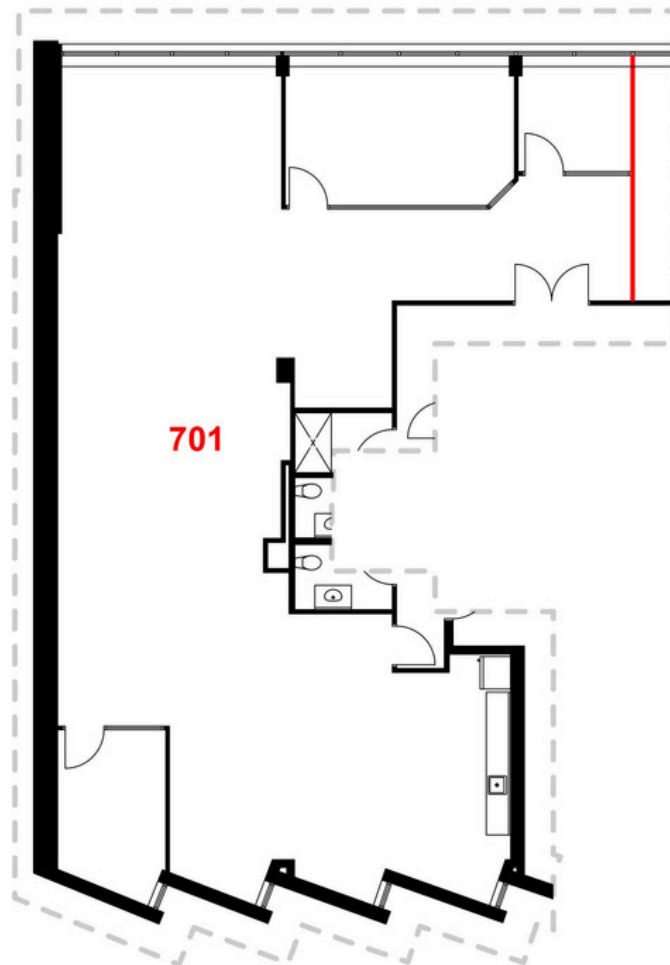
- New flooring
- Recently updated washrooms





222 Somerset St. W.  
OTTAWA, ONTARIO

### UNIT 701 - 2,494 square feet



THE ATTACHED DRAWING IS PROVIDED FOR INFORMATION PURPOSES ONLY AND SHOULD NOT BE RELIED UPON. THE LANDLORD SHALL NOT BE HELD RESPONSIBLE FOR THE PURPOSE OF THE TENANT'S WORK AND SPACE PLANNING.

### UNIT OVERVIEW

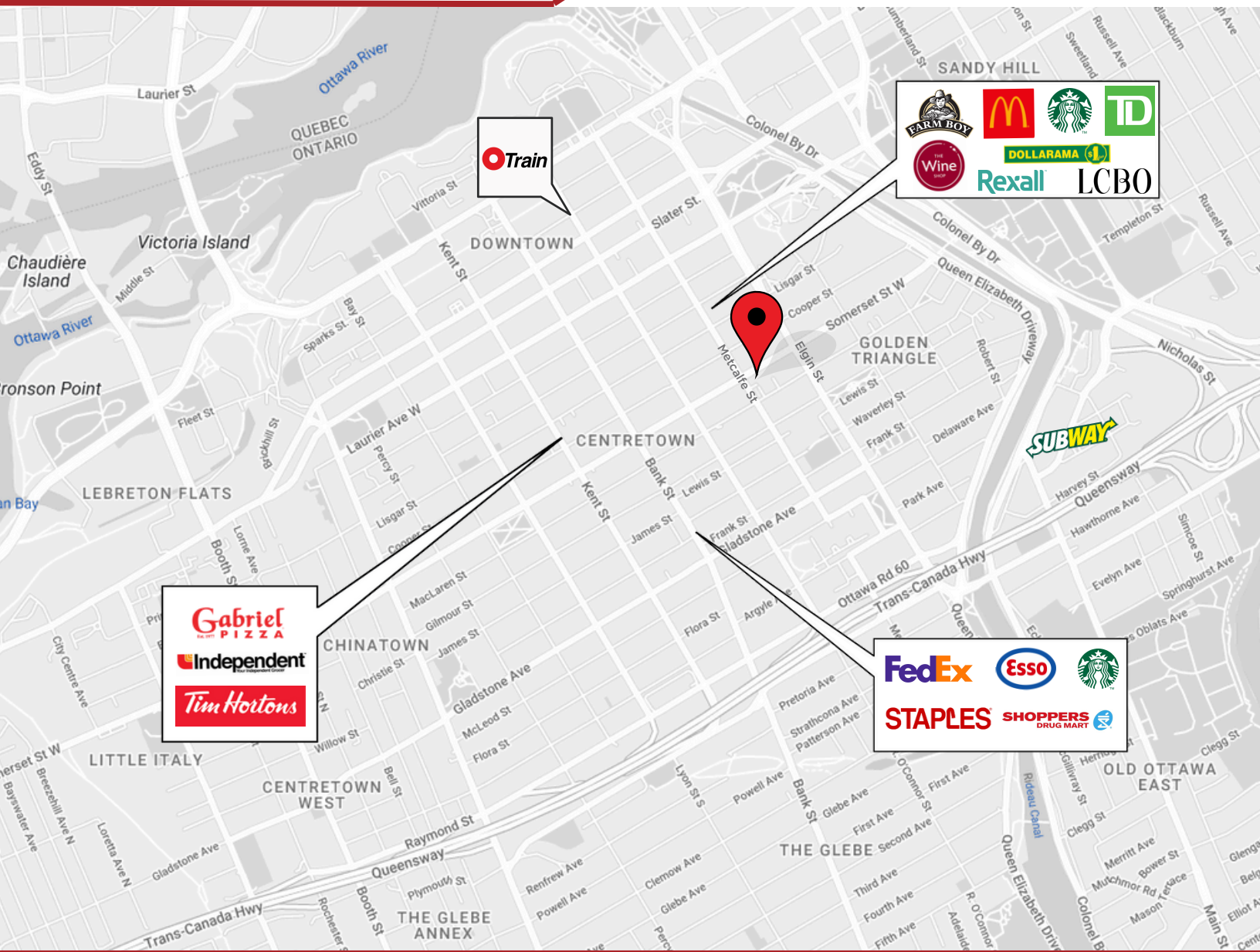
This 2,994 sq. ft. unit features wall-to-wall windows with a solarium on its north side. This unit boasts a private office, boardroom, and kitchenette. The building also has an on-site fitness room and is in close proximity to OC Transpo, restaurants, boutiques and Elgin St.

### UNIT HIGHLIGHTS

- Solarium
- Kitchenette
- Boardroom



222 Somerset St. W.  
OTTAWA, ONTARIO



## LOCATION DETAILS

- Public transit stops nearby
- Centrally located one block from Elgin St.
- Surrounded by retail shops, cafes, restaurants and pubs

Information contained herein has been obtained from sources that we deem to be reliable but is not warranted as such and does not form any part of any future contract. This offering may be altered or withdrawn at any time without notice.

**THE PROPERTIES GROUP MANAGEMENT LTD.**  
236 Metcalfe Street, Ottawa, ON K2P 1R3

(613) 369-5635 / [leasing@prpgrp.com](mailto:leasing@prpgrp.com)  
[www.thepropertiesgroup.ca](http://www.thepropertiesgroup.ca)