

FOR LEASE



**1680 Woodward Dr.
OTTAWA, ONTARIO**



1680 Woodward Dr.
OTTAWA, ONTARIO

UNIT	AREA	MINIMUM RENT	ADDITIONAL RENT	AVAILABILITY
201	979 SF	\$2,100/MONTH	--	IMMEDIATE
207	1,130 SF	\$2,710/MONTH	--	IMMEDIATE
215	1,290 SF	\$12/SF	\$13.69/SF	IMMEDIATE



THE PROPERTIES GROUP MANAGEMENT LTD.
236 Metcalfe Street, Ottawa, ON K2P 1R3

(613) 369-5635 / leasing@prpgrp.com
www.thepropertiesgroup.ca



1680 Woodward Dr.
OTTAWA, ONTARIO



*Rendering



Unit 201

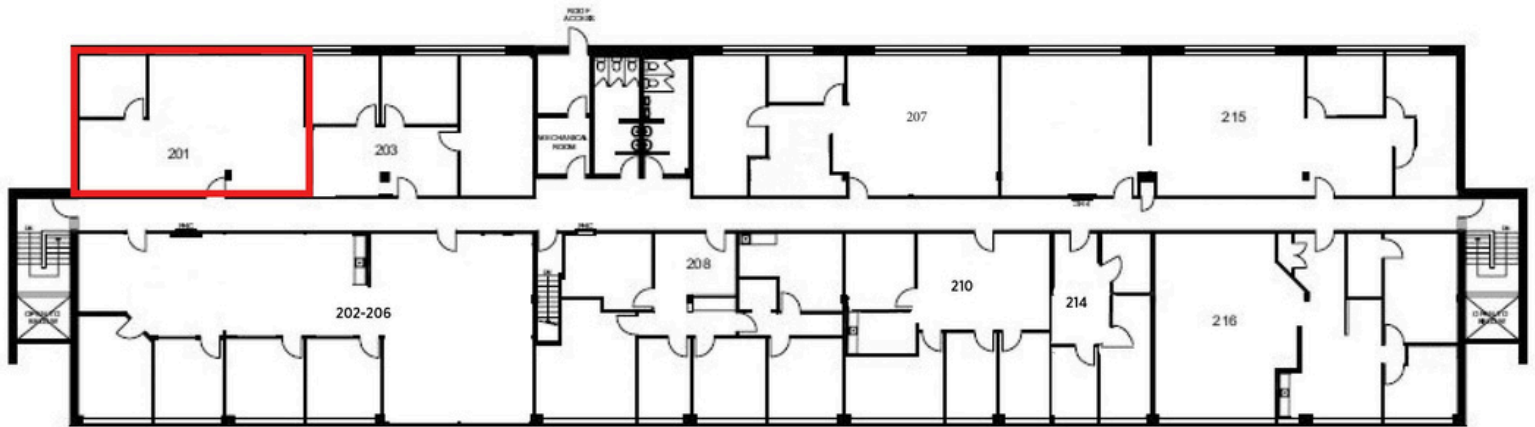


*Rendering



1680 Woodward Dr.
OTTAWA, ONTARIO

UNIT 201 - 979 square feet



THE ATTACHED DRAWINGS ARE PROVIDED FOR INFORMATION PURPOSES ONLY AND SHOULD NOT BE RELIED UPON. THE LANDLORD SHALL NOT BE HELD RESPONSIBLE FOR THE PURPOSE OF THE TENANT'S WORK AND SPACE PLANNING.

UNIT OVERVIEW

Centrally located in the Woodward Industrial Park, close to Carling Ave. and Hwy 417, this southeast-facing, second-floor corner unit offers large windows and an abundance of natural light. This flexible office space currently has a large common area, an enclosed office space, newly installed LED lighting and vinyl flooring. The building also offers after-hours access with a fob, recently renovated common washrooms and on-site parking.

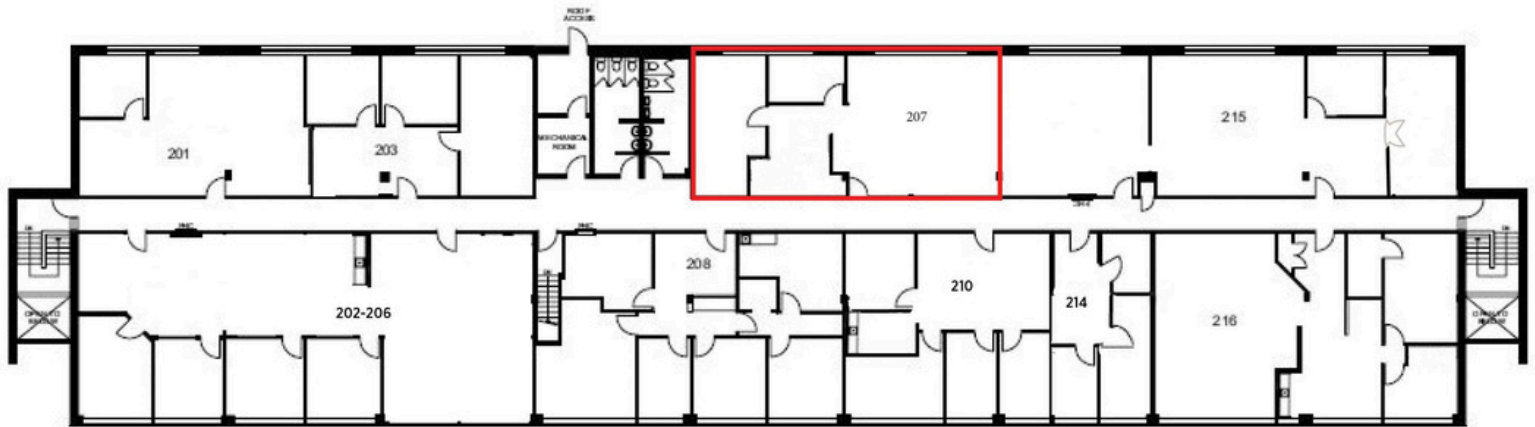
UNIT HIGHLIGHTS

- New flooring
- Natural light



1680 Woodward Dr.
OTTAWA, ONTARIO

UNIT 207 - 1,130 square feet



THE ATTACHED DRAWINGS ARE PROVIDED FOR INFORMATION PURPOSES ONLY AND SHOULD NOT BE RELIED UPON. THE LANDLORD SHALL NOT BE HELD RESPONSIBLE FOR THE PURPOSE OF THE TENANT'S WORK AND SPACE PLANNING.

UNIT OVERVIEW

Centrally located in the Woodward Industrial Park, close to Carling Ave and Hwy 417, this southeast-facing, second-floor unit offers large windows and an abundance of natural light. This flexible office currently has a large common area, an enclosed office space, a boardroom, and new LED lighting. The unit can also accommodate an open-concept kitchen area and full-sized appliances. The building offers after-hour access with a fob, recently renovated common washrooms, and on-site parking.

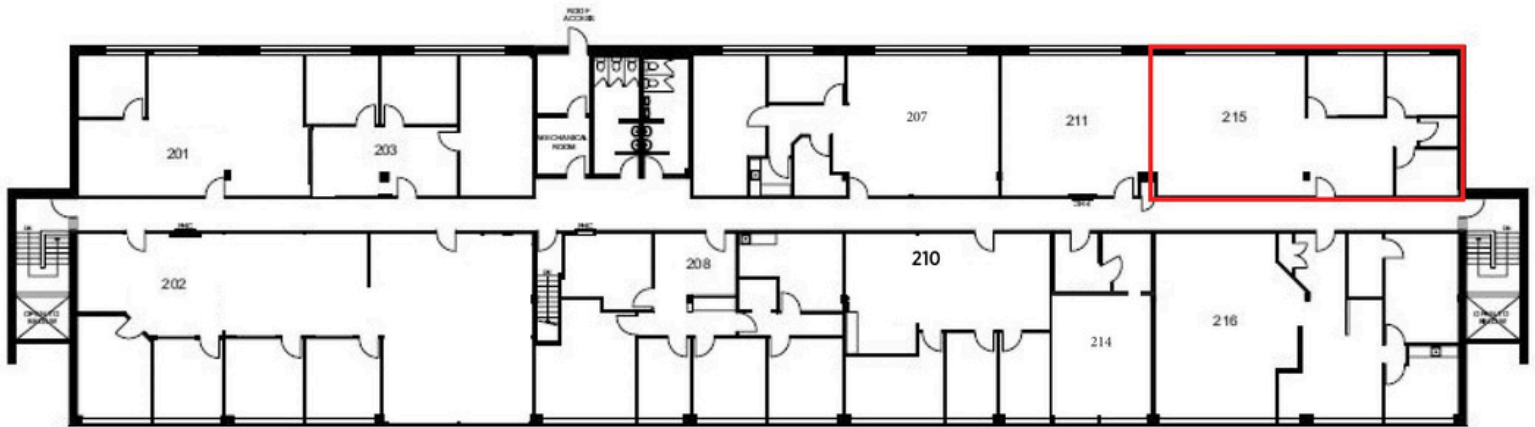
UNIT HIGHLIGHTS

- Natural Light
- 8.3' Drop Ceilings
- Generous Common Area
- Customizable Kitchen Area



1680 Woodward Dr.
OTTAWA, ONTARIO

UNIT 215 - 1,290 square feet



THE ATTACHED DRAWINGS ARE PROVIDED FOR INFORMATION PURPOSES ONLY AND SHOULD NOT BE RELIED UPON. THE LANDLORD SHALL NOT BE HELD RESPONSIBLE FOR THE PURPOSE OF THE TENANT'S WORK AND SPACE PLANNING.

UNIT OVERVIEW

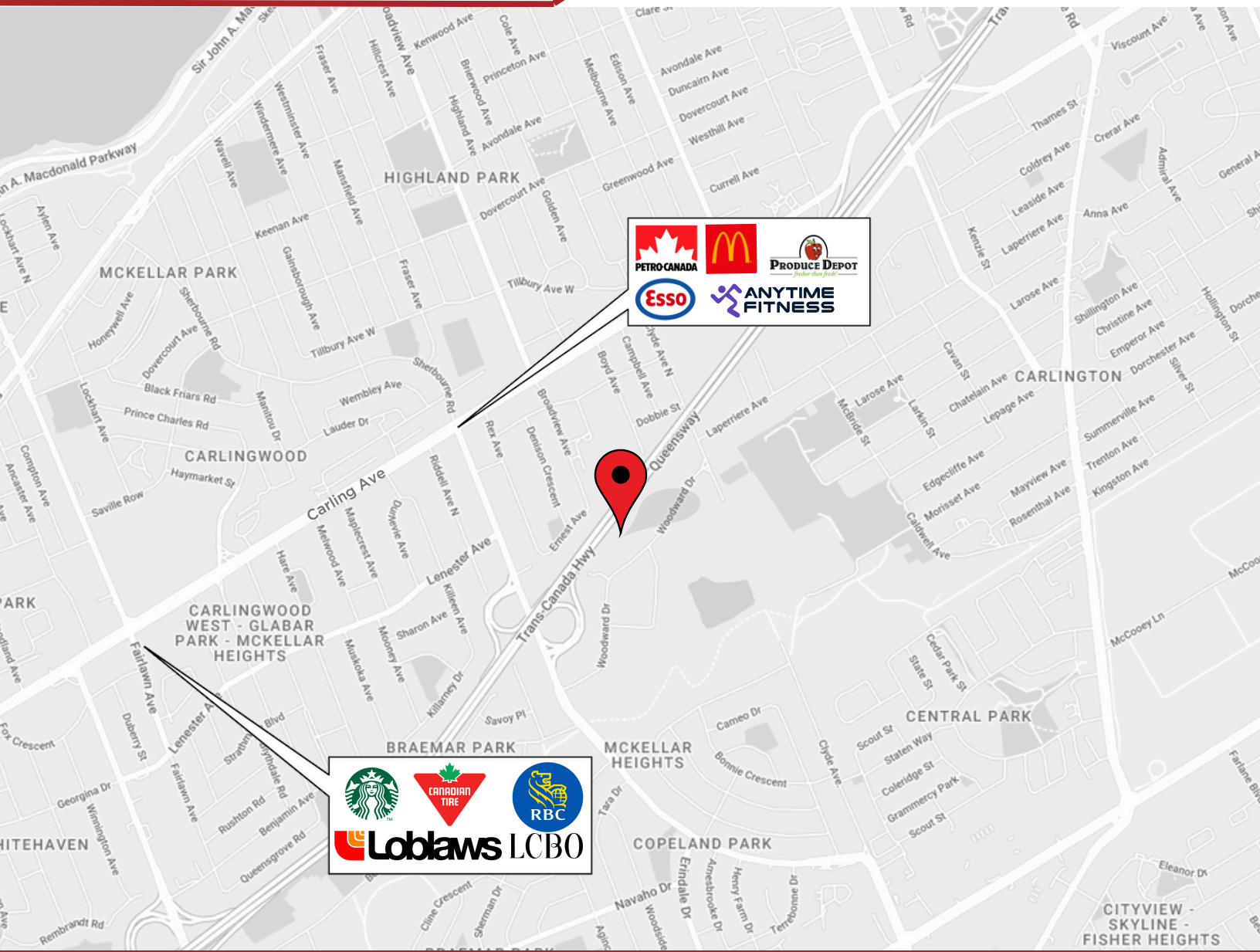
Centrally located in the Woodward Industrial Park, close to Carling Ave. and Hwy 417, this southeast-facing, second-floor unit offers large windows and an abundance of natural light. This flexible office space can be tailored to suit your business needs and is available in as-is condition. The building also offers after-hour access with a fob, recently renovated common washrooms, and on-site parking.

UNIT HIGHLIGHTS

- Natural Light
- 8.3' Drop Ceilings
- Boardroom
- Employee kitchen area



1680 Woodward Dr.
OTTAWA, ONTARIO



LOCATION DETAILS

- Public transit stop nearby
- Close to Carling Ave. and Hwy 417
- Centrally located in the Woodward Industrial Park

Information contained herein has been obtained from sources that we deem to be reliable but is not warranted as such and does not form any part of any future contract. This offering may be altered or withdrawn at any time without notice.

THE PROPERTIES GROUP MANAGEMENT LTD.
236 Metcalfe Street, Ottawa, ON K2P 1R3

(613) 369-5635 / leasing@prpgrp.com
www.thepropertiesgroup.ca