

# FOR LEASE

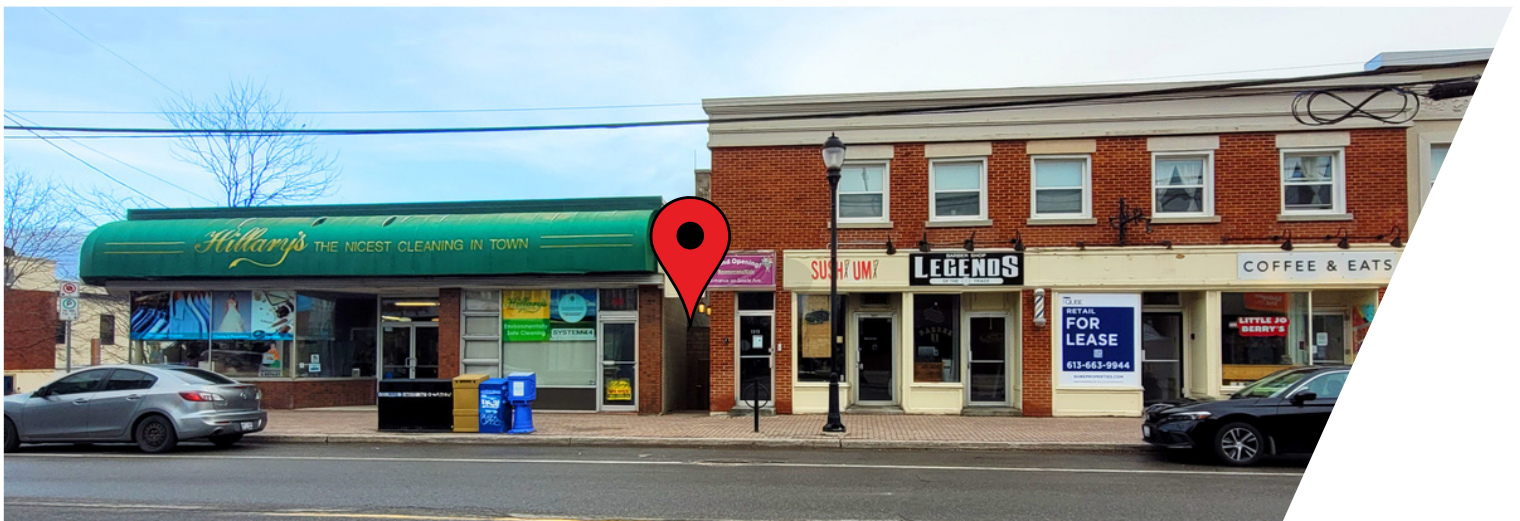


**1315 Wellington St. W.  
OTTAWA, ONTARIO**





1315 Wellington St. W.  
OTTAWA, ONTARIO



**THE PROPERTIES GROUP MANAGEMENT LTD.**  
236 Metcalfe Street, Ottawa, ON K2P 1R3

(613) 369-5486 / [leasing@prpgrp.com](mailto:leasing@prpgrp.com)  
[www.thepropertiesgroup.ca](http://www.thepropertiesgroup.ca)



Entrance from  
Smirle Ave.

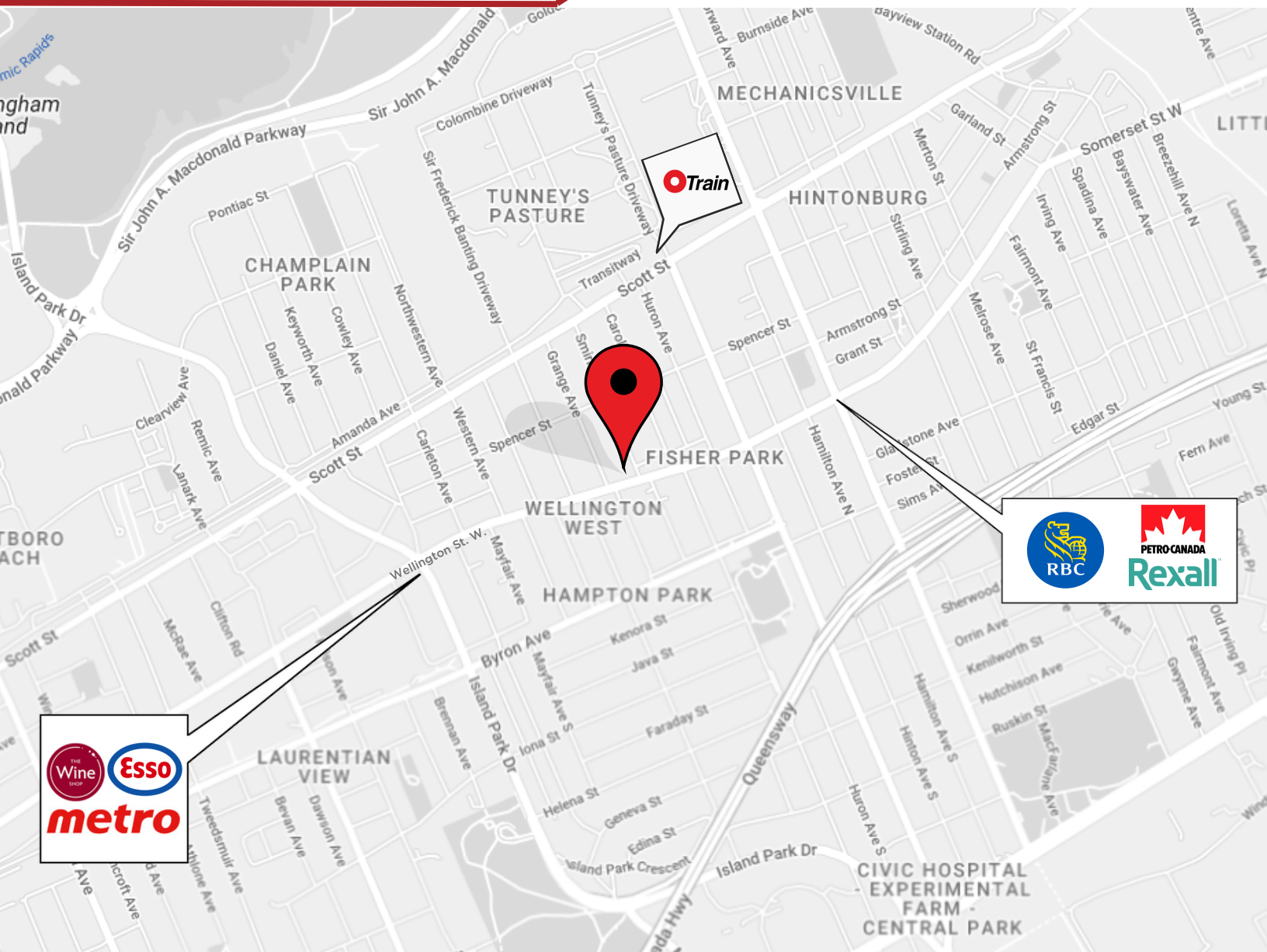


Nestled in the heart of Wellington West, walking distance from Tunney's Pasture LRT Station, this 3,846 sq. ft. unit features two entrances, Wellington St. W. and Smirle Ave., and is perfect for a tenant looking for a large space with a central location and does not require street frontage. The unit neighbours countless restaurants, cafes, retail boutiques, and services located on Wellington St. W.

- Two entrances
- Large space



1315 Wellington St. W.  
OTTAWA, ONTARIO



## LOCATION DETAILS

- Prime retail location
- Year-round foot traffic
- Close proximity to Tunney's Pasture O-Train station
- Close proximity to Hwy. 417 Parkdale exit

Information contained herein has been obtained from sources that we deem to be reliable but is not warranted as such and does not form any part of any future contract. This offering may be altered or withdrawn at any time without notice.

**THE PROPERTIES GROUP MANAGEMENT LTD.**  
236 Metcalfe Street, Ottawa, ON K2P 1R3

(613) 369-5486 / [leasing@prpgrp.com](mailto:leasing@prpgrp.com)  
[www.thepropertiesgroup.ca](http://www.thepropertiesgroup.ca)