

FOR LEASE



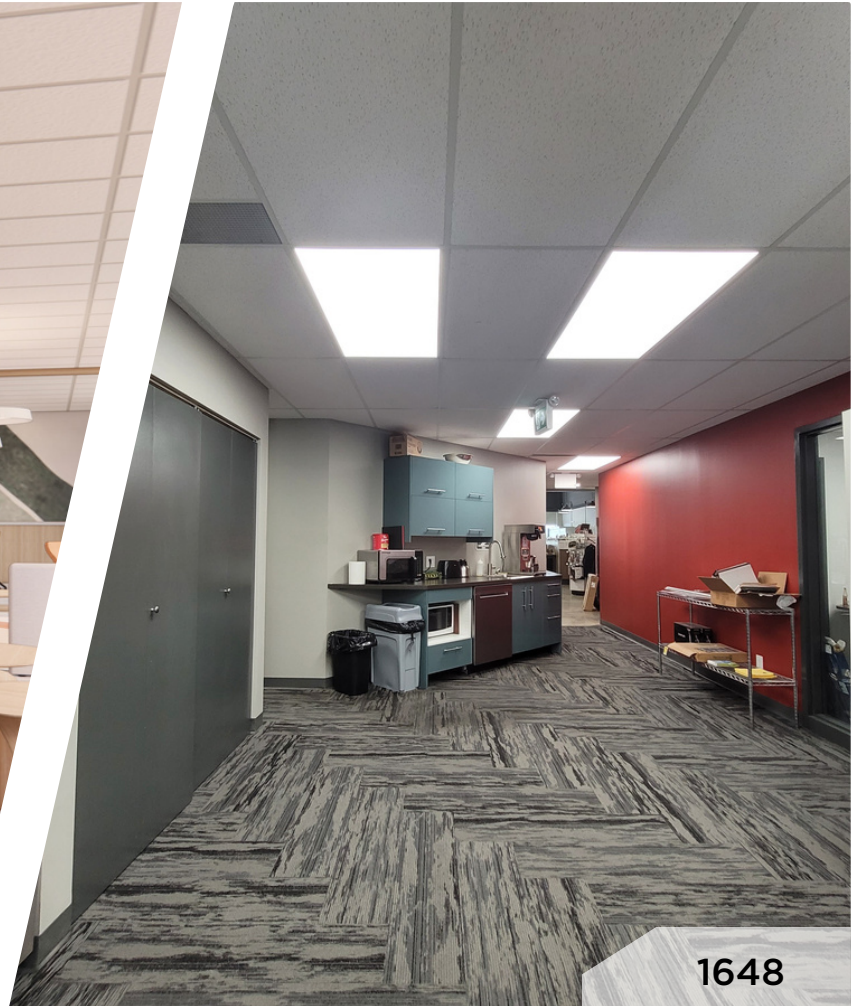
**1648 Woodward Dr.
OTTAWA, ONTARIO**



1648 Woodward Dr.
OTTAWA, ONTARIO



*Rendering



1648

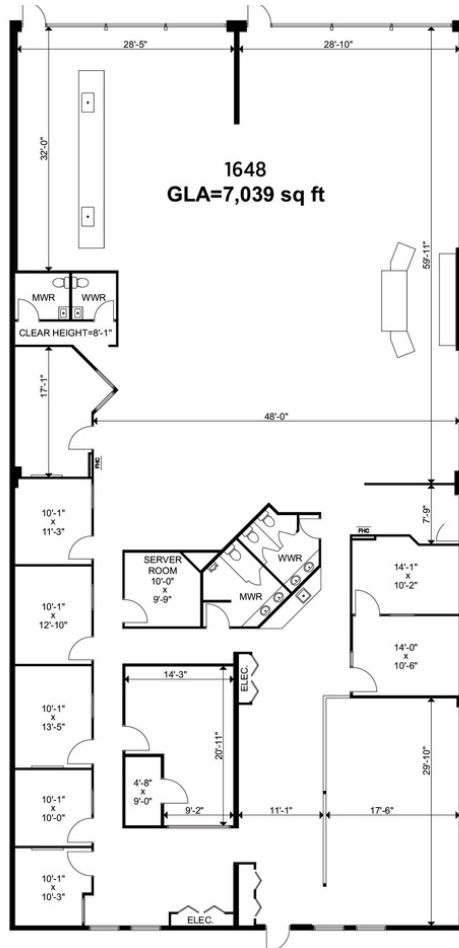


1648



1648 Woodward Dr.
OTTAWA, ONTARIO

UNIT 1648 - 7,039 square feet



THE ATTACHED DRAWINGS ARE PROVIDED FOR INFORMATION PURPOSES ONLY AND SHOULD NOT BE RELIED UPON. THE LANDLORD SHALL NOT BE HELD RESPONSIBLE FOR THE PURPOSE OF THE TENANT'S WORK AND SPACE PLANNING.

UNIT OVERVIEW

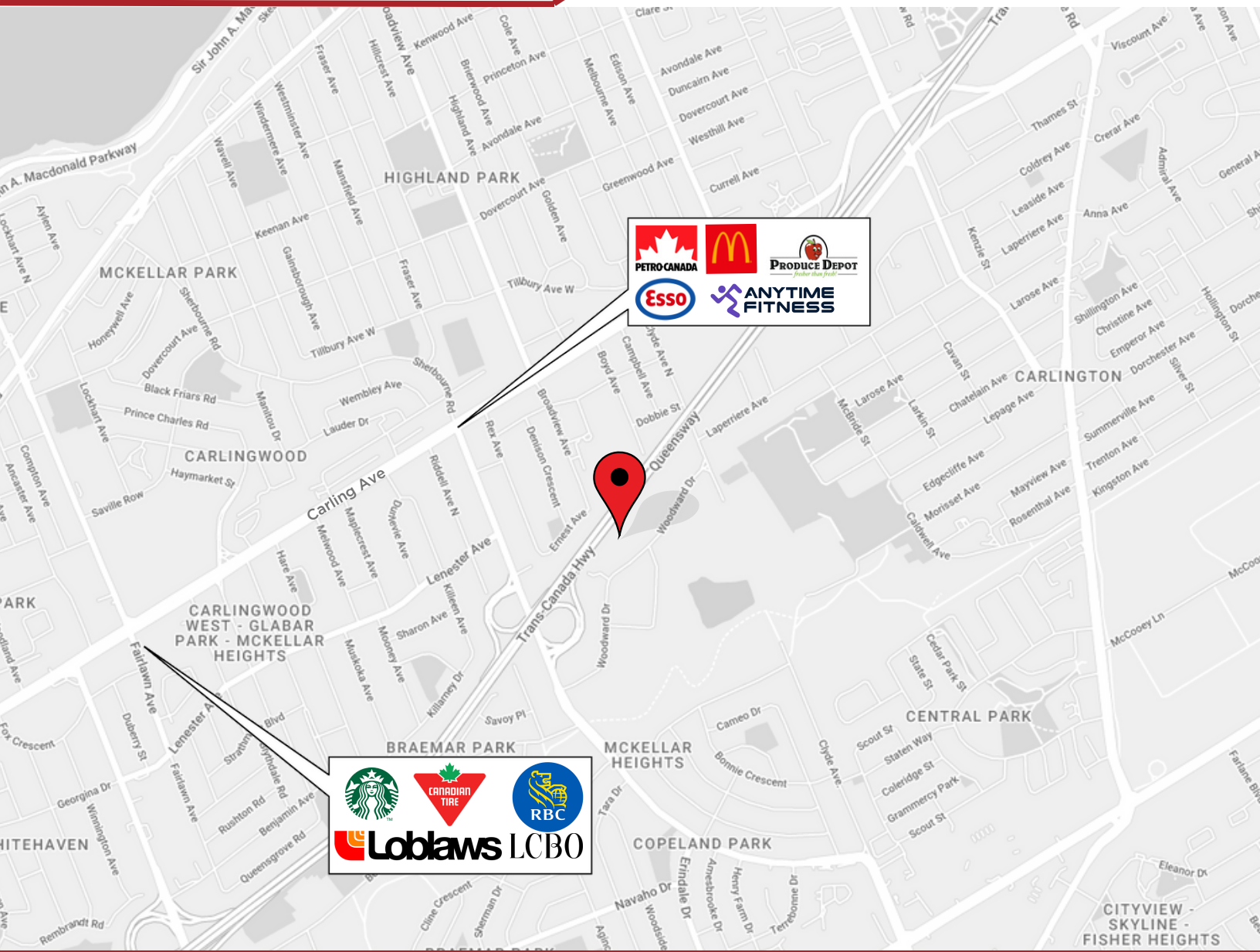
Centrally located in the Woodward Industrial Park, close to Carling Ave. and Hwy 417, this ground-floor unit offers store frontage onto Woodward Dr. with additional signage opportunities. This mixed-use space would be perfect for any business looking to have a retail space and offices at the same location. Available February 2024.

UNIT HIGHLIGHTS

- Mixed-use Space
- Ceiling height available up to 16'



1648 Woodward Dr.
OTTAWA, ONTARIO



LOCATION DETAILS

- Public transit stop nearby
- Close to Carling Ave. and Hwy 417
- Centrally located in the Woodward Industrial Park

Information contained herein has been obtained from sources that we deem to be reliable but is not warranted as such and does not form any part of any future contract. This offering may be altered or withdrawn at any time without notice.

THE PROPERTIES GROUP MANAGEMENT LTD.
236 Metcalfe Street, Ottawa, ON K2P 1R3

(613) 369-5486 / leasing@prpgrp.com
www.thepropertiesgroup.ca