

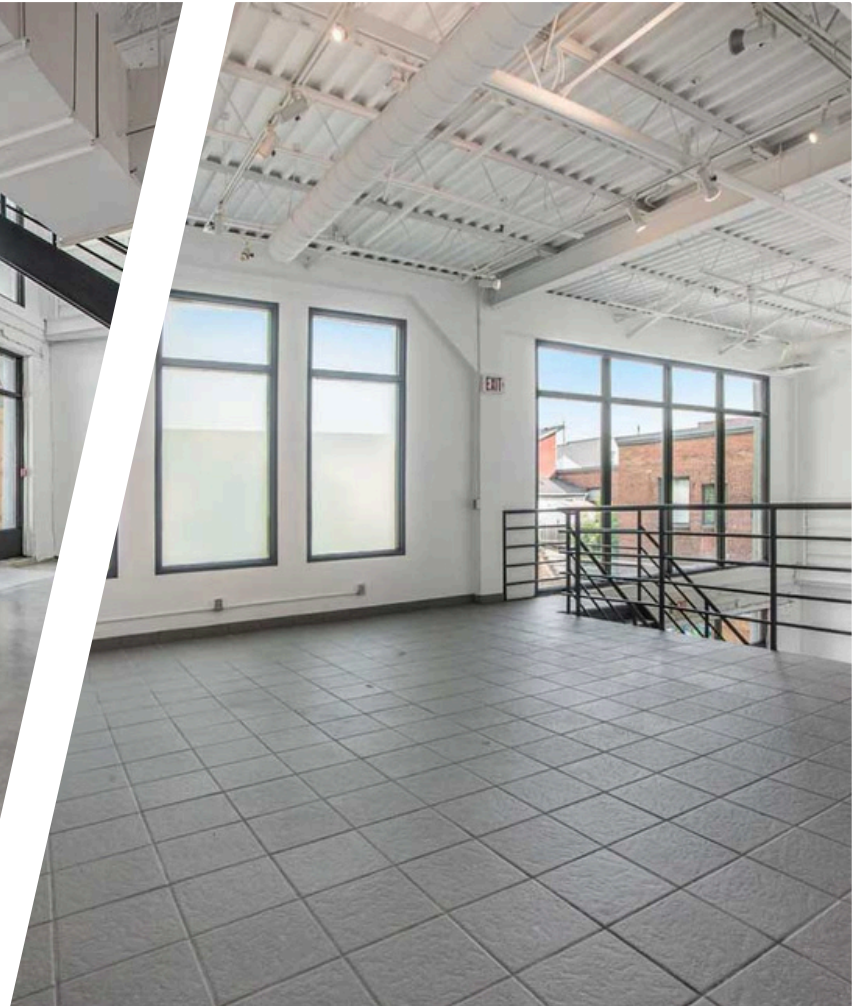
FOR LEASE



**101 Murray St.
OTTAWA, ONTARIO**



101 Murray St.
OTTAWA, ONTARIO



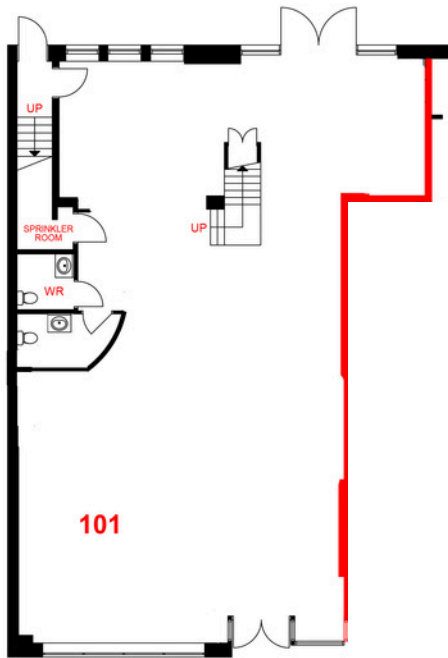
THE PROPERTIES GROUP MANAGEMENT LTD.
236 Metcalfe Street, Ottawa, ON K2P 1R3

(613) 369-5635 / leasing@prpgrp.com
www.thepropertiesgroup.ca

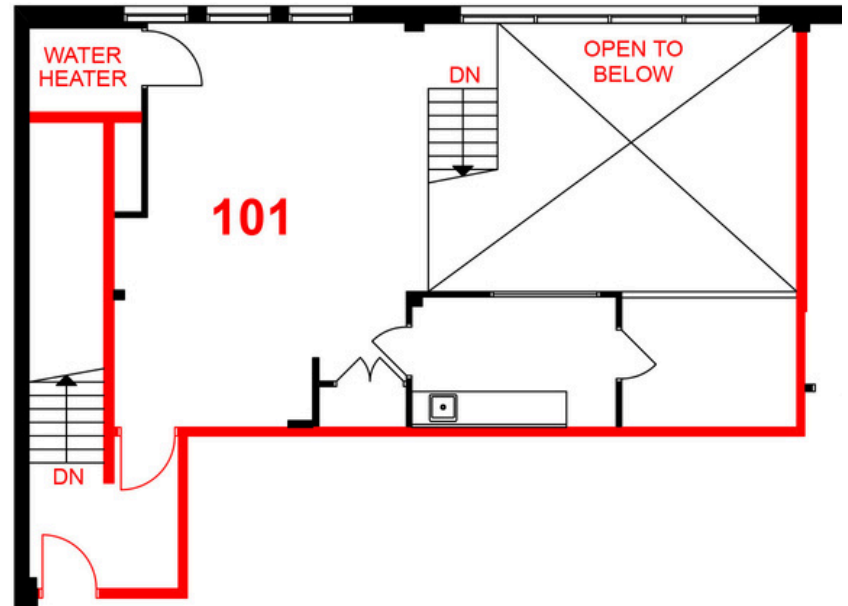


UNIT 101 - 3,360 square feet (approximate)

FLOOR 1



FLOOR 2 (MEZZANINE)



THE ATTACHED DRAWINGS ARE PROVIDED FOR INFORMATION PURPOSES ONLY AND SHOULD NOT BE RELIED UPON. THE LANDLORD SHALL NOT BE HELD RESPONSIBLE FOR THE PURPOSE OF THE TENANT'S WORK AND SPACE PLANNING.

UNIT OVERVIEW

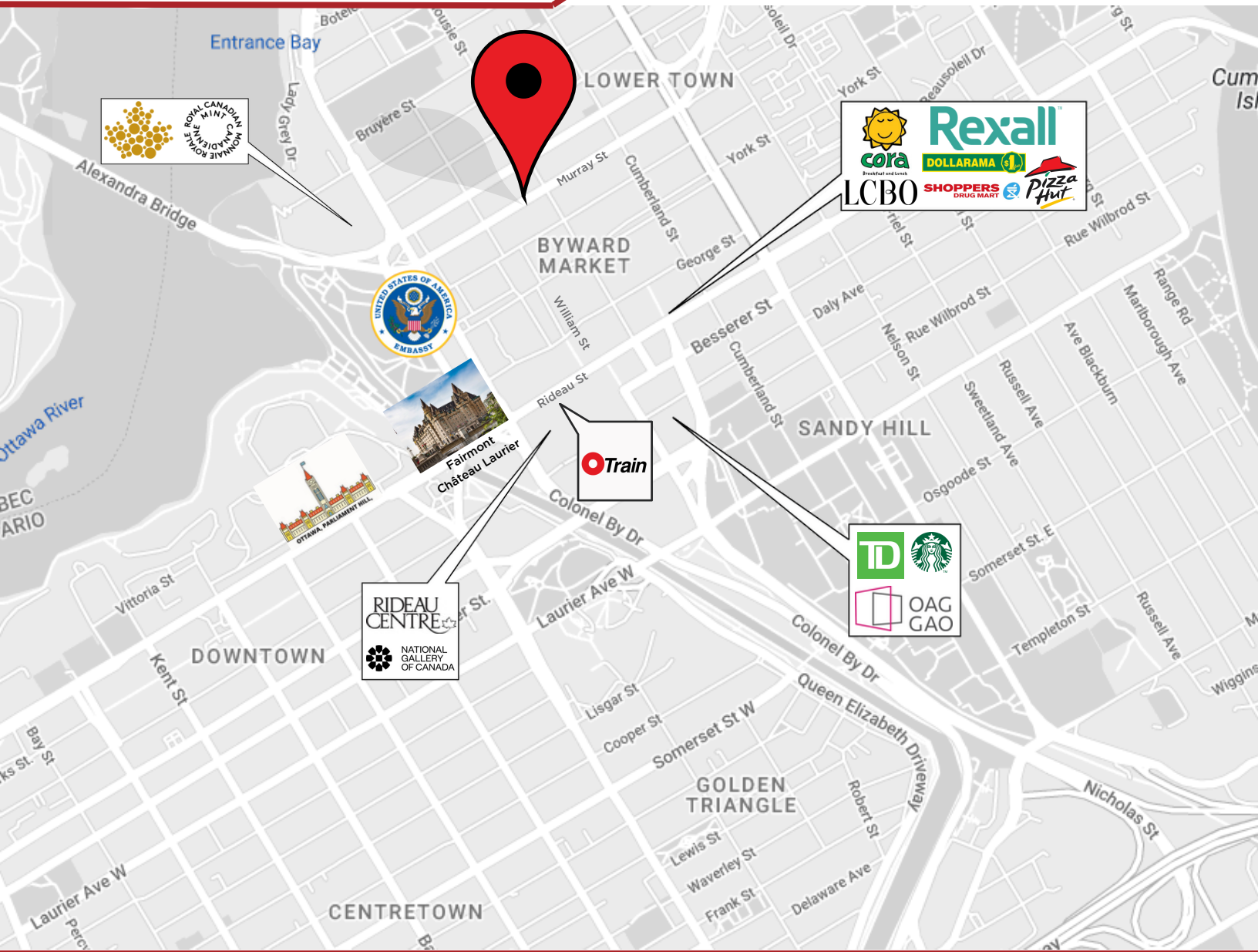
Located in the ByWard Market, this unit measuring approximately 3,360 sq. ft. fronts onto Murray St and features a generous upper mezzanine and back patio. The ByWard Market draws locals and tourists alike to its Farmer's Markets, restaurants, boutiques, and cafes. This sleek, spacious ground floor unit offers an open floor plan and generous frontage for any tenant looking for a location in this busy neighbourhood. This unit also features floor to ceiling windows bringing plenty of natural light into the space.

UNIT HIGHLIGHTS

- Signage opportunities.
- Great location.
- Generous upper mezzanine and patio.
- Open concept unit.



101 Murray St.
OTTAWA, ONTARIO



LOCATION DETAILS

- ByWard Market
- Busy pedestrian neighbourhood
- Close proximity to Rideau O-Train station and Rideau Centre

Information contained herein has been obtained from sources that we deem to be reliable but is not warranted as such and does not form any part of any future contract. This offering may be altered or withdrawn at any time without notice.

THE PROPERTIES GROUP MANAGEMENT LTD.
236 Metcalfe Street, Ottawa, ON K2P 1R3

(613) 369-5635 / leasing@prpgrp.com
www.thepropertiesgroup.ca