

FOR LEASE



**Unit 120 - 245 - 265 King George Rd.
BRANTFORD, ONTARIO**



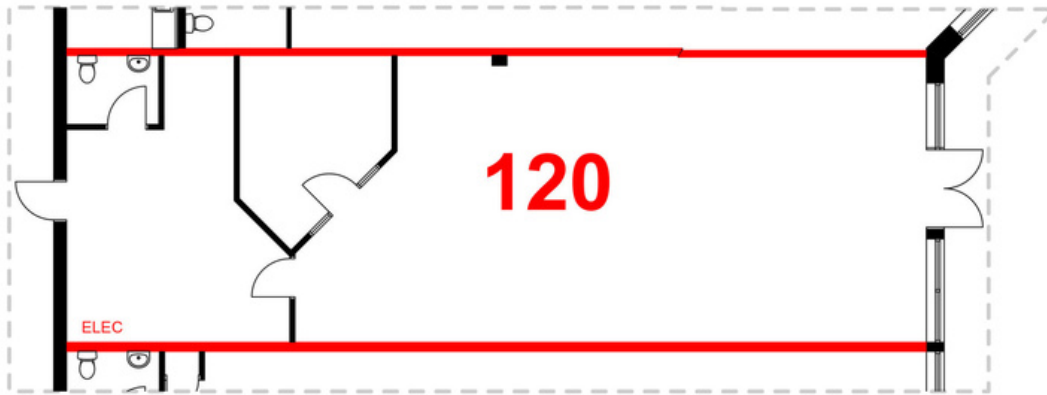
Unit 120 - 245 - 265 King George Rd. BRANTFORD, ONTARIO





Unit 120 - 245 - 265 King George Rd. BRANTFORD, ONTARIO

UNIT 120
1,634 sq. ft.



THE ATTACHED DRAWINGS ARE PROVIDED FOR INFORMATION PURPOSES ONLY AND SHOULD NOT BE RELIED UPON. THE LANDLORD SHALL NOT BE HELD RESPONSIBLE FOR THE PURPOSE OF THE TENANT'S WORK AND SPACE PLANNING.

UNIT OVERVIEW

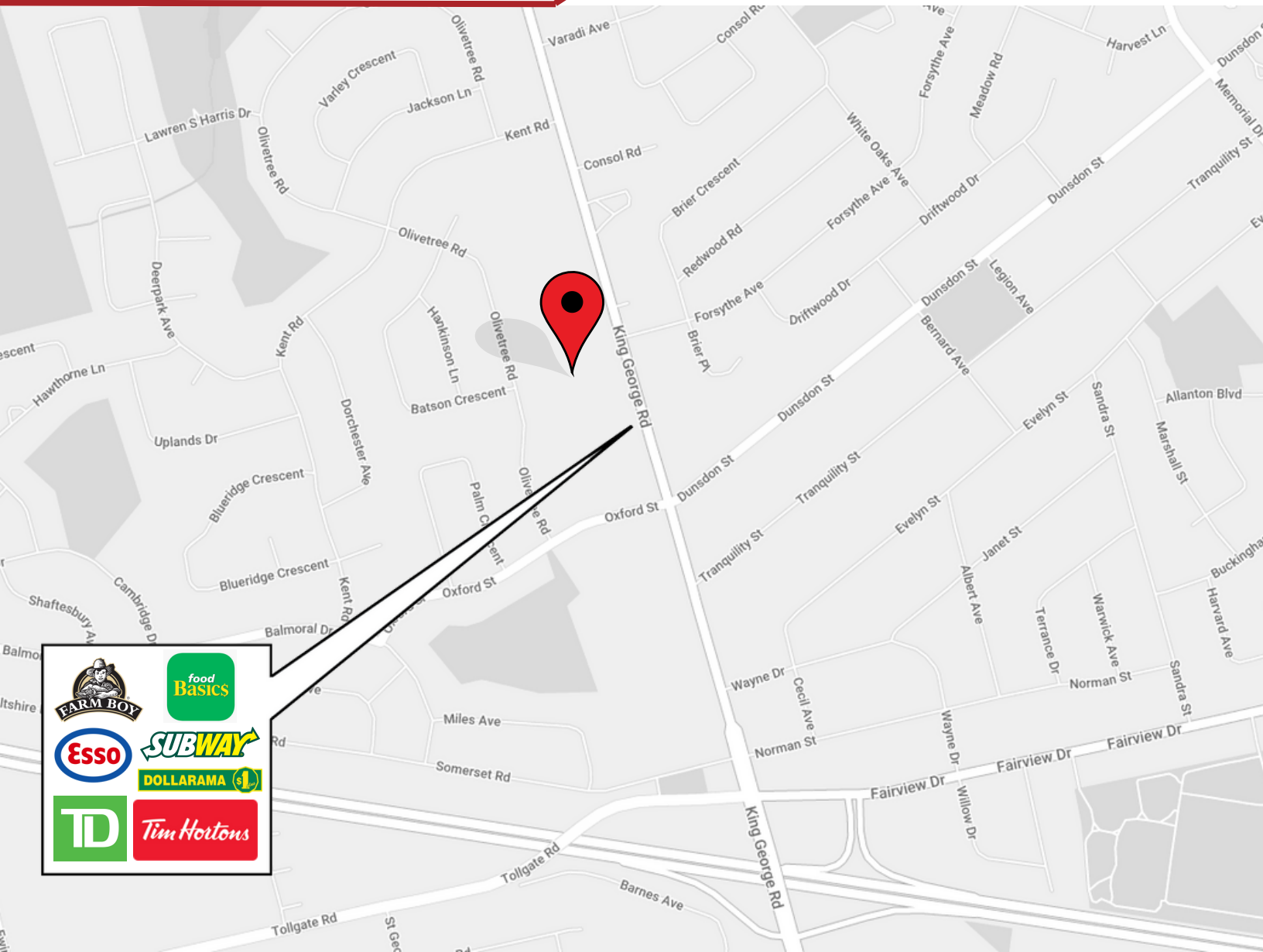
Located in Brantford on King George Rd. just North of Fairview Dr. and Hwy. 403, this 1,634 sq. ft. unit sits in the Northridge Plaza. With street-facing store frontage, and available pylon signage, this inline unit is Nationally anchored by Food Basics, Wendy's, and Tim Horton's. This unit is situated in a prime retail location and is currently outfitted as an office unit and can be converted for quick service restaurant or retail use.

UNIT HIGHLIGHTS

- Wall to wall window frontage
- Inline unit



Unit 120 - 245 - 265 King George Rd. BRANTFORD, ONTARIO



LOCATION DETAILS

- High visibility
- Centrally Located
- National tenant mix

Information contained herein has been obtained from sources that we deem to be reliable but is not warranted as such and does not form any part of any future contract. This offering may be altered or withdrawn at any time without notice.

THE PROPERTIES GROUP MANAGEMENT LTD.
236 Metcalfe Street, Ottawa, ON K2P 1R3

(613) 369-5635 / leasing@prpgrp.com
www.thepropertiesgroup.ca