

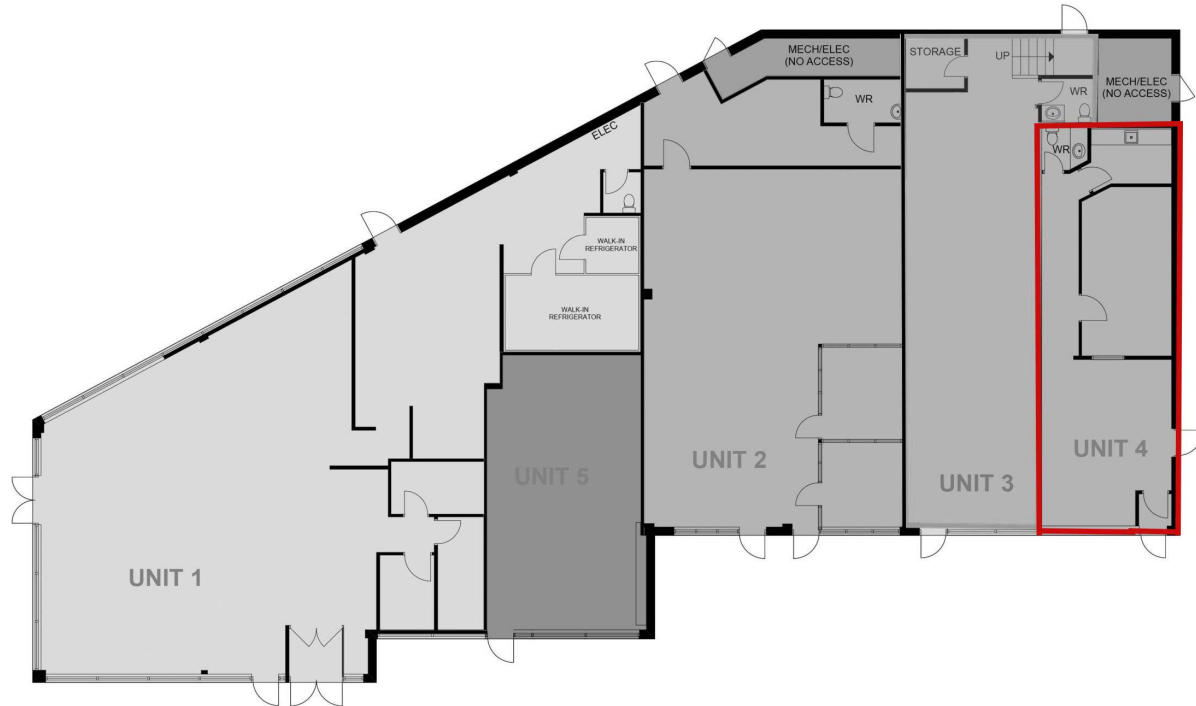
FOR LEASE



Unit 4 - 580 King St. W.
OSHAWA, ONTARIO



UNIT 4- 793 square feet



THE ATTACHED DRAWINGS ARE PROVIDED FOR INFORMATION PURPOSES ONLY AND SHOULD NOT BE RELIED UPON. THE LANDLORD SHALL NOT BE HELD RESPONSIBLE FOR THE PURPOSE OF THE TENANT'S WORK AND SPACE PLANNING.

UNIT OVERVIEW

This retail unit is located in Oshawa's high-traffic shopping intersection, neighbouring the Oshawa Centre and in proximity to Hwy 401. This unit boasts 15' of frontage, and can also be built-out for a retail boutique, beauty salon, or office.

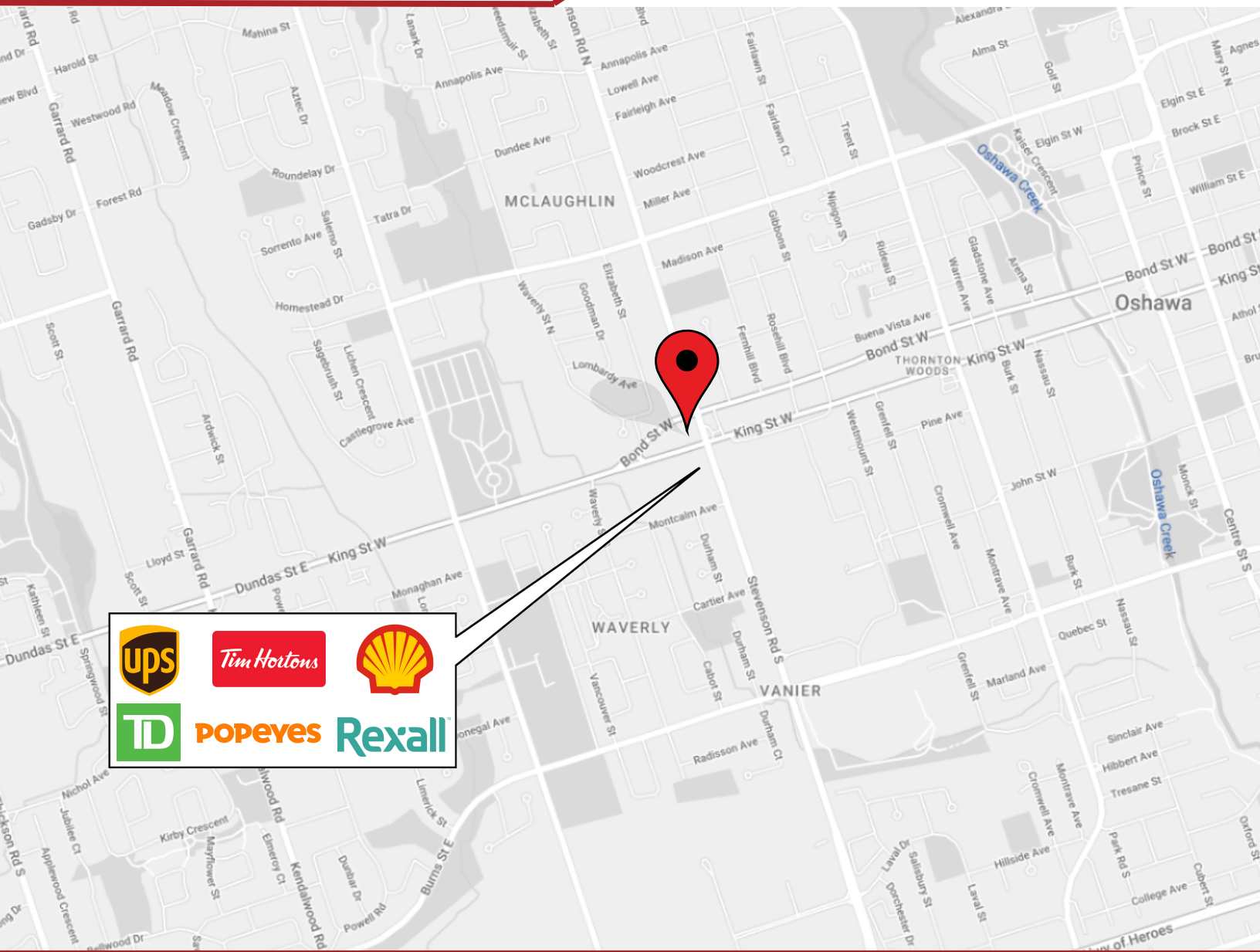
UNIT HIGHLIGHTS

- 15' of frontage
- Pylon & building signage available

*Source: Statistic Canada, 2021 Census.



Unit 4 - 580 King St. W. OSHAWA, ONTARIO



LOCATION DETAILS

- Prime retail location
- Centrally located and close to the Oshawa Centre

Information contained herein has been obtained from sources that we deem to be reliable but is not warranted as such and does not form any part of any future contract. This offering may be altered or withdrawn at any time without notice.

THE PROPERTIES GROUP MANAGEMENT LTD.
236 Metcalfe Street, Ottawa, ON K2P 1R3

(613) 369-5486 / leasing@prpgrp.com
www.thepropertiesgroup.ca