

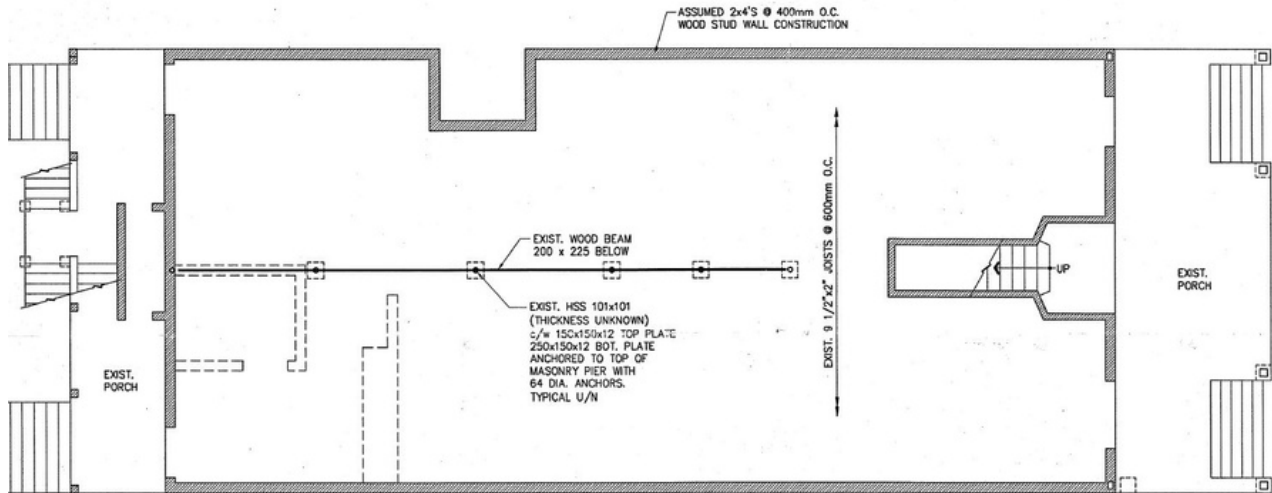
FOR LEASE



108 Murray St. Unit 108
OTTAWA, ONTARIO



UNIT 108 - 1,800 square feet



THE ATTACHED DRAWINGS ARE PROVIDED FOR INFORMATION PURPOSES ONLY AND SHOULD NOT BE RELIED UPON. THE LANDLORD SHALL NOT BE HELD RESPONSIBLE FOR THE PURPOSE OF THE TENANT'S WORK AND SPACE PLANNING.

UNIT OVERVIEW

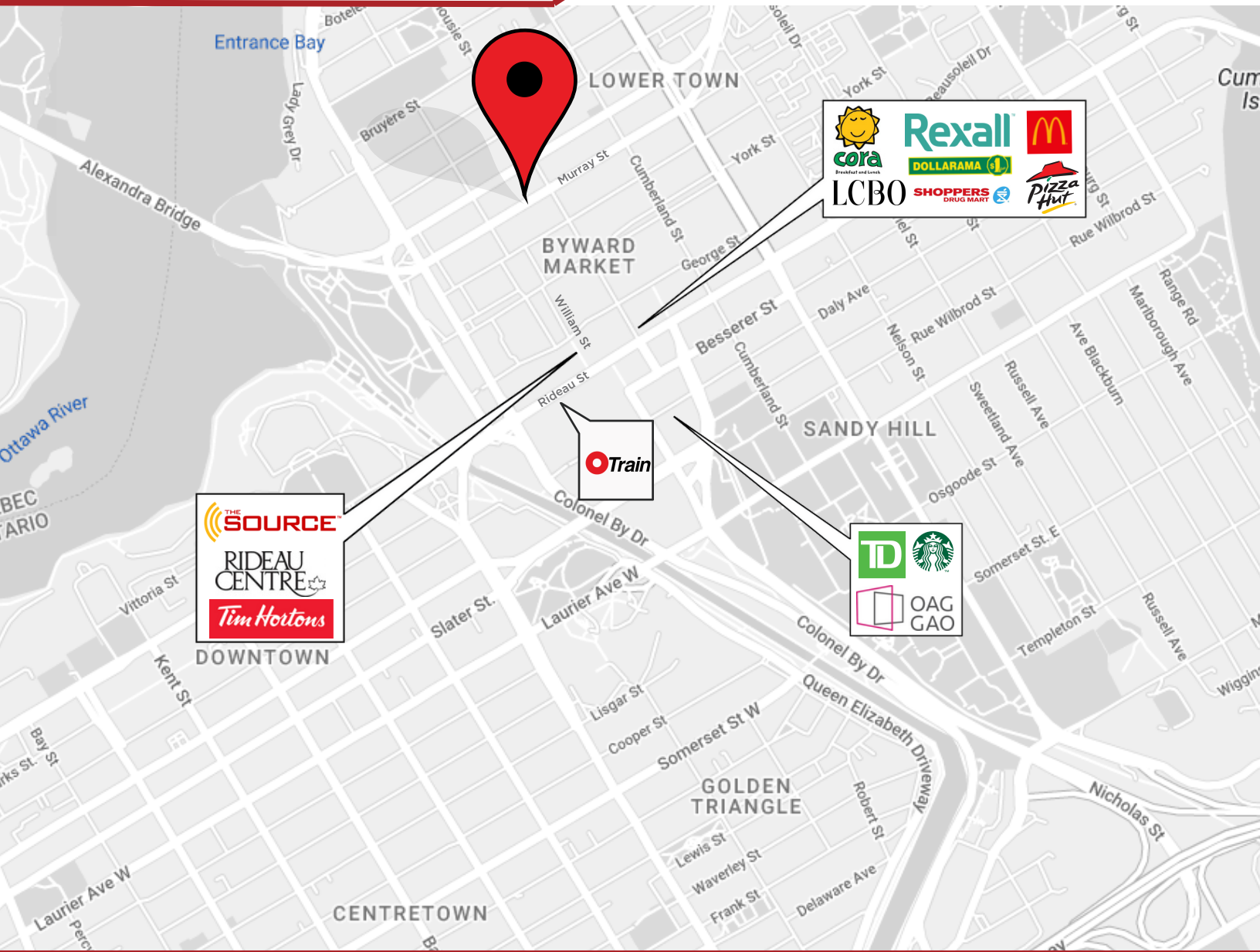
Located in the ByWard Market, this 1,800 sq. ft. unit fronts onto Murray St. with a welcoming front porch. The ByWard Market draws locals and tourists alike to its Farmer's Markets, restaurants, boutiques, and cafes. This turn-key unit is outfitted as a restaurant and comes with a fully equipped kitchen space ready for any restaurant looking for a location in this busy neighbourhood.

UNIT HIGHLIGHTS

- Signage opportunities
- Fully equipped kitchen



108 Murray St. Unit 108
OTTAWA, ONTARIO



LOCATION DETAILS

- ByWard Market
- Busy pedestrian neighbourhood
- Close proximity to Rideau O-Train station and Rideau Centre

Information contained herein has been obtained from sources that we deem to be reliable but is not warranted as such and does not form any part of any future contract. This offering may be altered or withdrawn at any time without notice.

THE PROPERTIES GROUP MANAGEMENT LTD.
236 Metcalfe Street, Ottawa, ON K2P 1R3

(613) 369-5486 / leasing@prpgrp.com
www.thepropertiesgroup.ca