

FOR LEASE



**105 Clarence St. Unit B
OTTAWA, ONTARIO**

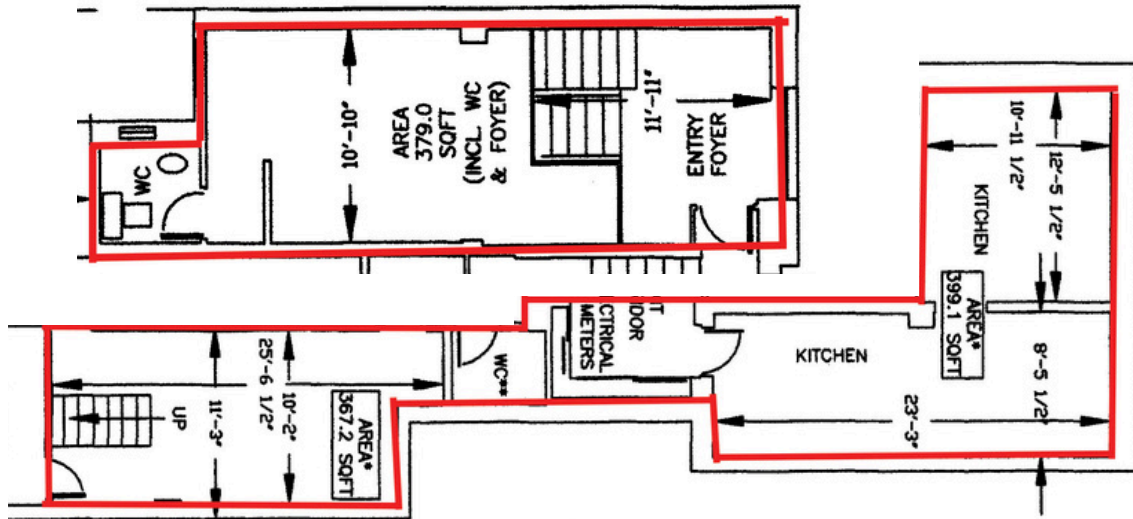


105 Clarence St. Unit B
OTTAWA, ONTARIO





UNIT B - 1,195 square feet



THE ATTACHED DRAWINGS ARE PROVIDED FOR INFORMATION PURPOSES ONLY AND SHOULD NOT BE RELIED UPON. THE LANDLORD SHALL NOT BE HELD RESPONSIBLE FOR THE PURPOSE OF THE TENANT'S WORK AND SPACE PLANNING.

UNIT OVERVIEW

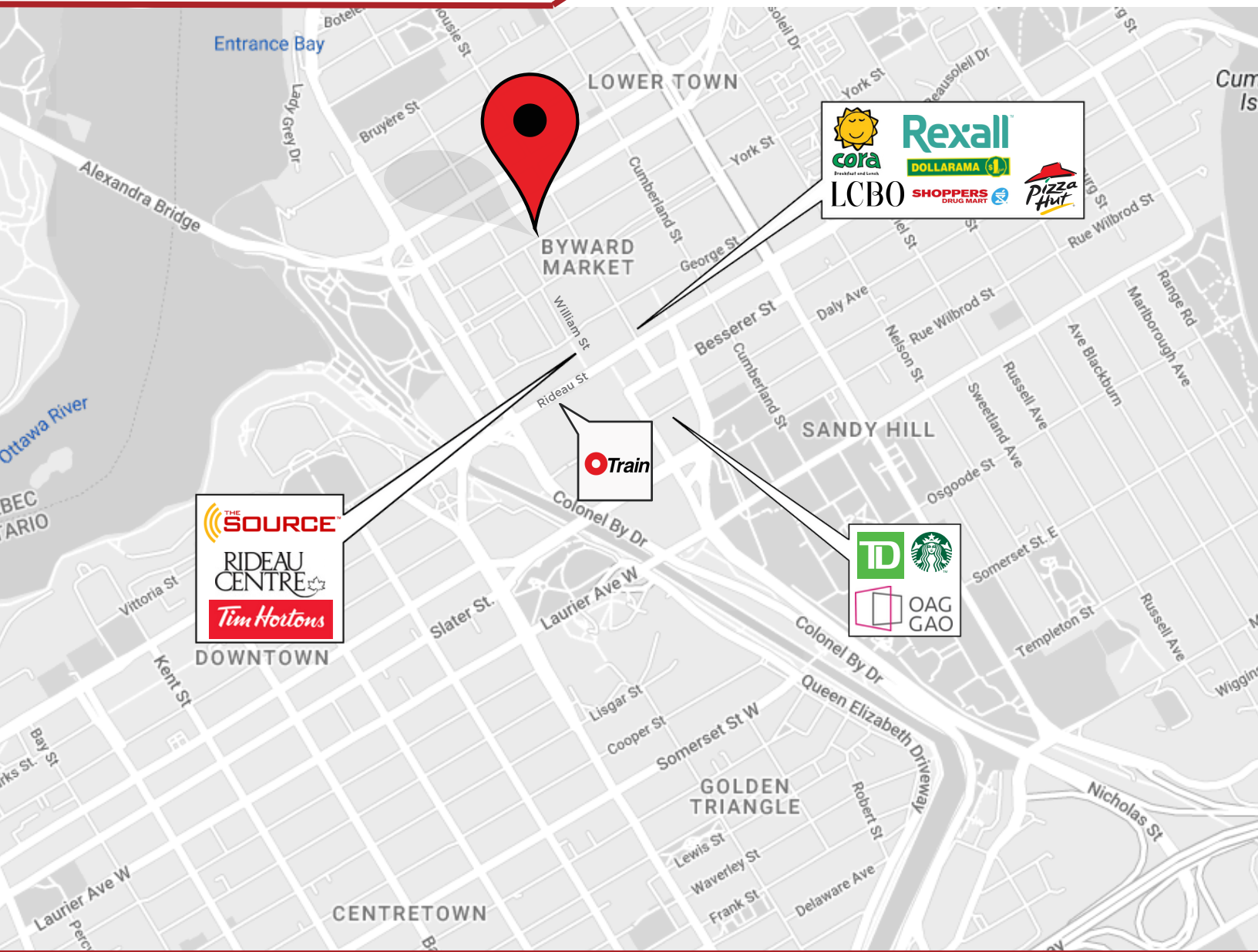
Located in the ByWard Market, this split level, 1,195 sq.ft. unit fronts onto the bustling Clarence St. and features space for indoor and outdoor seating, a fully equipped kitchen, and in-unit storage. Neighbouring the Rideau Centre, the ByWard Market draws locals and tourists alike to its Farmer's Markets, restaurants, boutiques, cafes, and pedestrian-friendly streets. Available April 2025.

UNIT HIGHLIGHTS

- In-unit storage
- Fully equipped kitchen



105 Clarence St. Unit B
OTTAWA, ONTARIO



LOCATION DETAILS

- Prime retail location
- High traffic pedestrian-friendly street
- Close proximity to Rideau O-Train station and Rideau Centre

Information contained herein has been obtained from sources that we deem to be reliable but is not warranted as such and does not form any part of any future contract. This offering may be altered or withdrawn at any time without notice.

THE PROPERTIES GROUP MANAGEMENT LTD.
236 Metcalfe Street, Ottawa, ON K2P 1R3

(613) 369-5635 / leasing@prpgrp.com
www.thepropertiesgroup.ca