

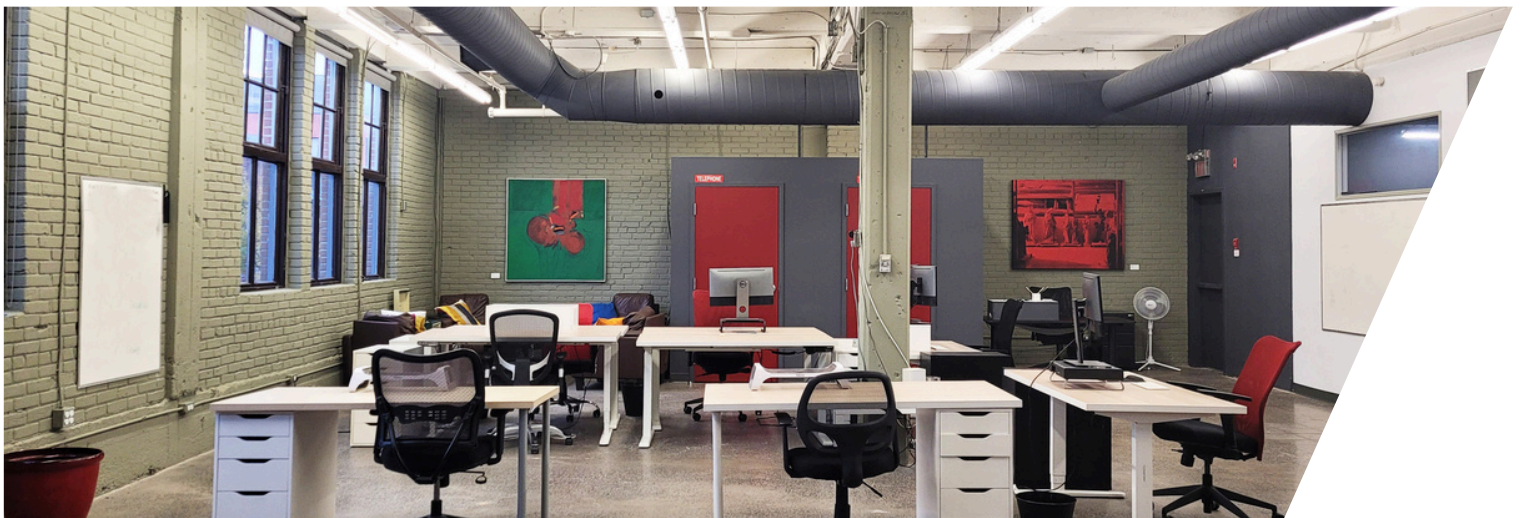
FOR LEASE



**105 Murray St.
OTTAWA, ONTARIO**



105 Murray St.
OTTAWA, ONTARIO



THE PROPERTIES GROUP MANAGEMENT LTD.
236 Metcalfe Street, Ottawa, ON K2P 1R3

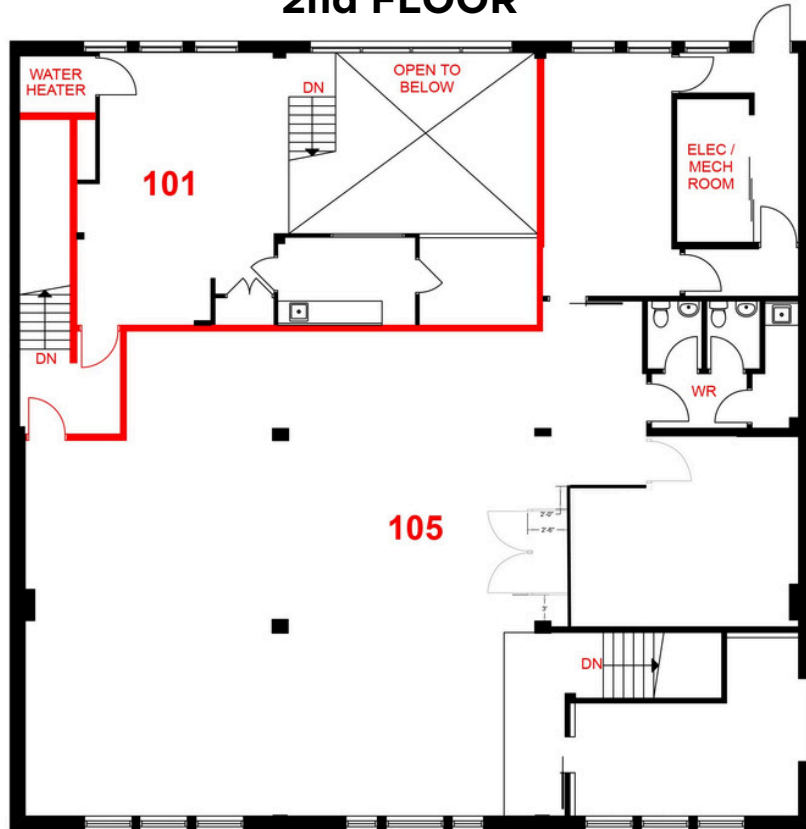
(613) 369-5635 / leasing@prpgrp.com
www.thepropertiesgroup.ca



105 Murray St.
OTTAWA, ONTARIO

UNIT 105 - 3,363 square feet (approximate)

2nd FLOOR



THE ATTACHED DRAWINGS ARE PROVIDED FOR INFORMATION PURPOSES ONLY AND SHOULD NOT BE RELIED UPON. THE LANDLORD SHALL NOT BE HELD RESPONSIBLE FOR THE PURPOSE OF THE TENANT'S WORK AND SPACE PLANNING.

UNIT OVERVIEW

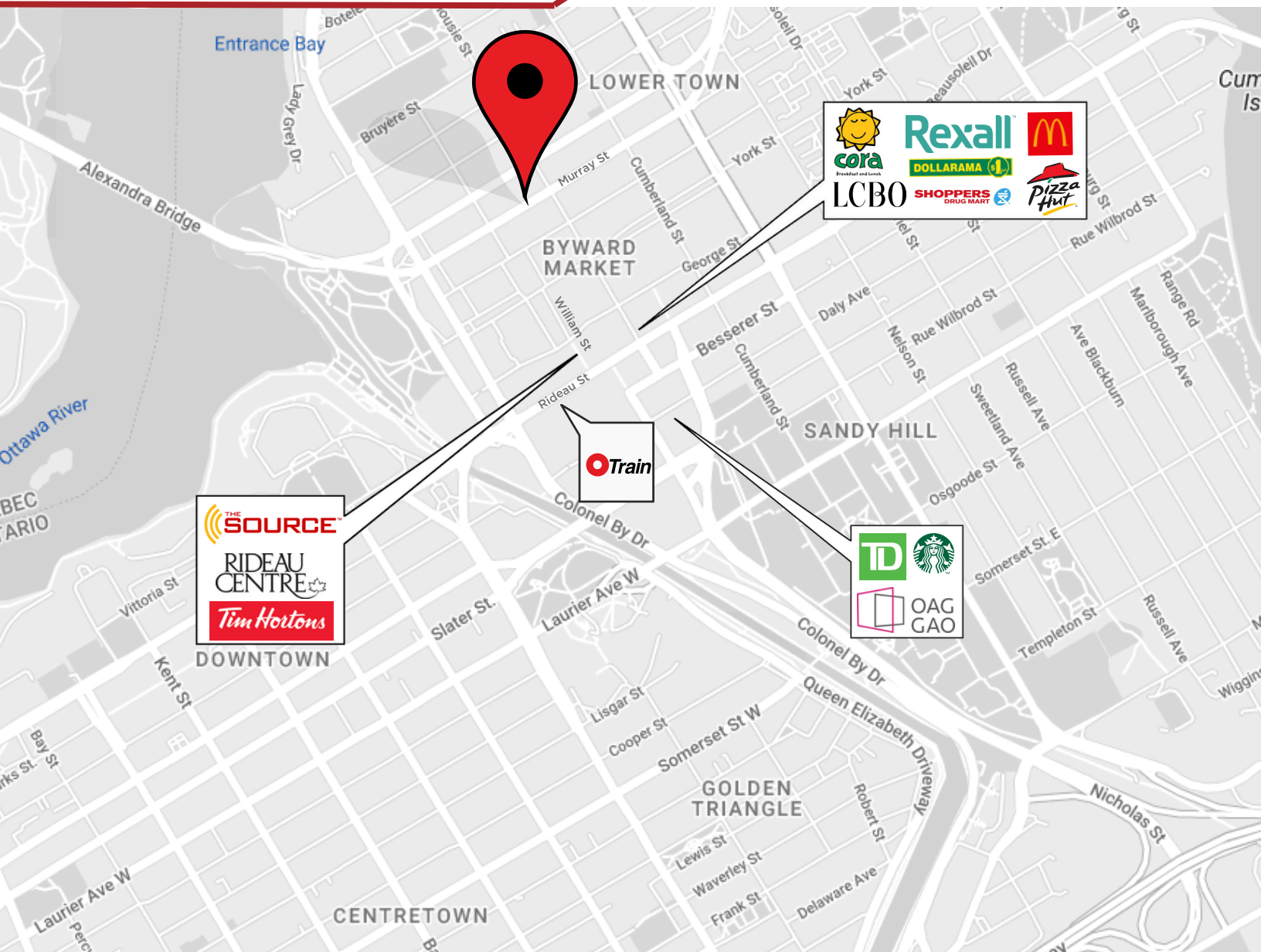
The ByWard Market draws locals and tourists alike to its bustling Farmer's Markets, restaurants, boutiques, and cafes. This stylishly fixtured 3,363 sq. ft. (approx.) second-floor office unit overlooks Murray Street and features plenty of natural light. This bright and modern office space features a boardroom, three offices, a large open concept area, exposed ceilings, and brick walls, and is move-in ready. Perfect for anyone looking for a chic and flexible office space in the downtown core, this unit is available as of November 2024.

UNIT HIGHLIGHTS

- Signage opportunities.
- Great location.
- Open concept unit.
- Flexible office space.



105 Murray St.
OTTAWA, ONTARIO



LOCATION DETAILS

- ByWard Market
- Busy pedestrian neighbourhood
- Close proximity to Rideau O-Train station and Rideau Centre

Information contained herein has been obtained from sources that we deem to be reliable but is not warranted as such and does not form any part of any future contract. This offering may be altered or withdrawn at any time without notice.

THE PROPERTIES GROUP MANAGEMENT LTD.
236 Metcalfe Street, Ottawa, ON K2P 1R3

(613) 369-5635 / leasing@prpgrp.com
www.thepropertiesgroup.ca