

# FOR LEASE

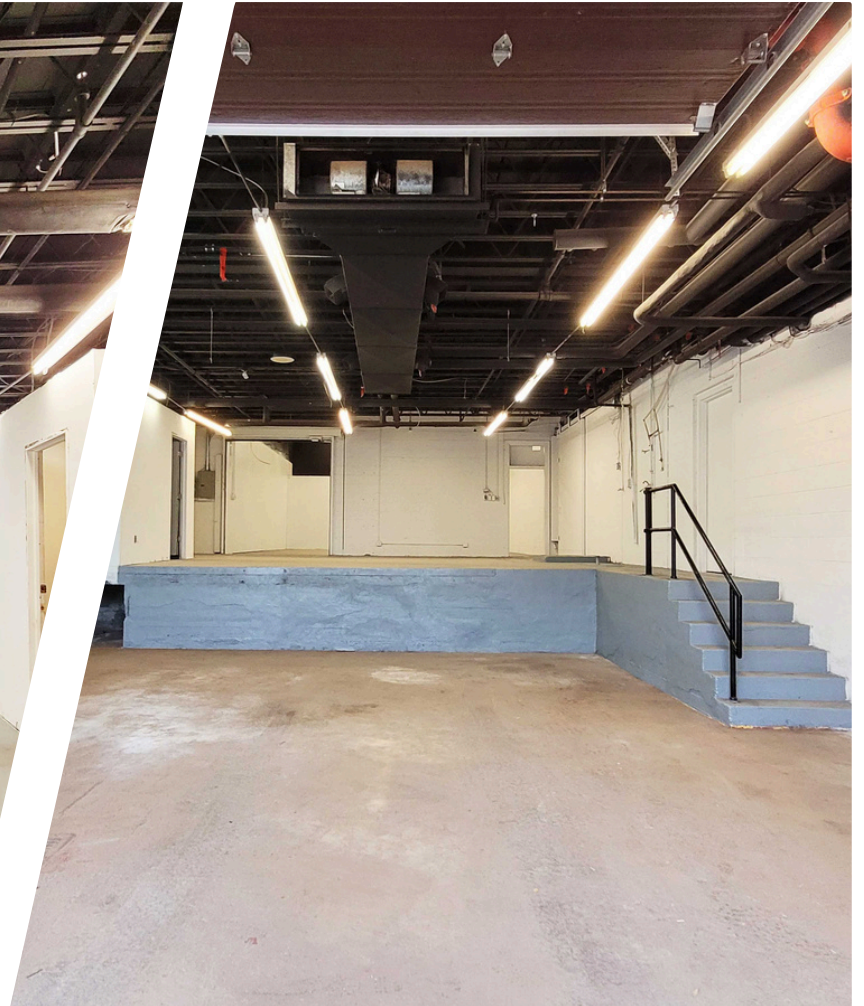


1546 Chatelain Ave.  
OTTAWA, ONTARIO





1546 Chatelain Ave.  
OTTAWA, ONTARIO



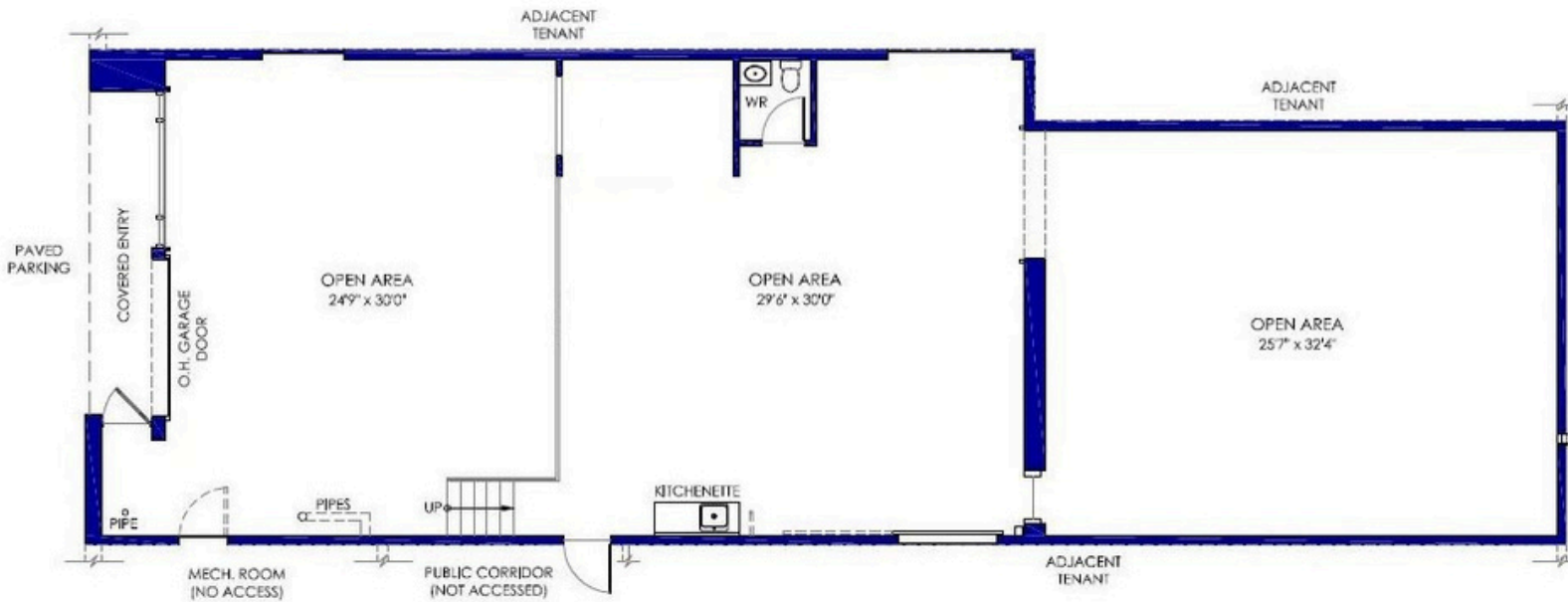
**THE PROPERTIES GROUP MANAGEMENT LTD.**  
236 Metcalfe Street, Ottawa, ON K2P 1R3

**(613) 369-5635 / [leasing@prpgrp.com](mailto:leasing@prpgrp.com)**  
**[www.thepropertiesgroup.ca](http://www.thepropertiesgroup.ca)**



1546 Chatelain Ave.  
OTTAWA, ONTARIO

## FLOOR PLAN



THE ATTACHED DRAWINGS ARE PROVIDED FOR INFORMATION PURPOSES ONLY AND SHOULD NOT BE RELIED UPON. THE LANDLORD SHALL NOT BE HELD RESPONSIBLE FOR THE PURPOSE OF THE TENANT'S WORK AND SPACE PLANNING.

## UNIT OVERVIEW

Located in Carlington, in close proximity to Carling Ave. and Hwy. 417, this 2,841 sq. ft. split-level industrial space offers expansive storage, an overhead garage door, ceiling heights ranging from 8'11"-13'5", and on-site parking. Available August 1, 2024.

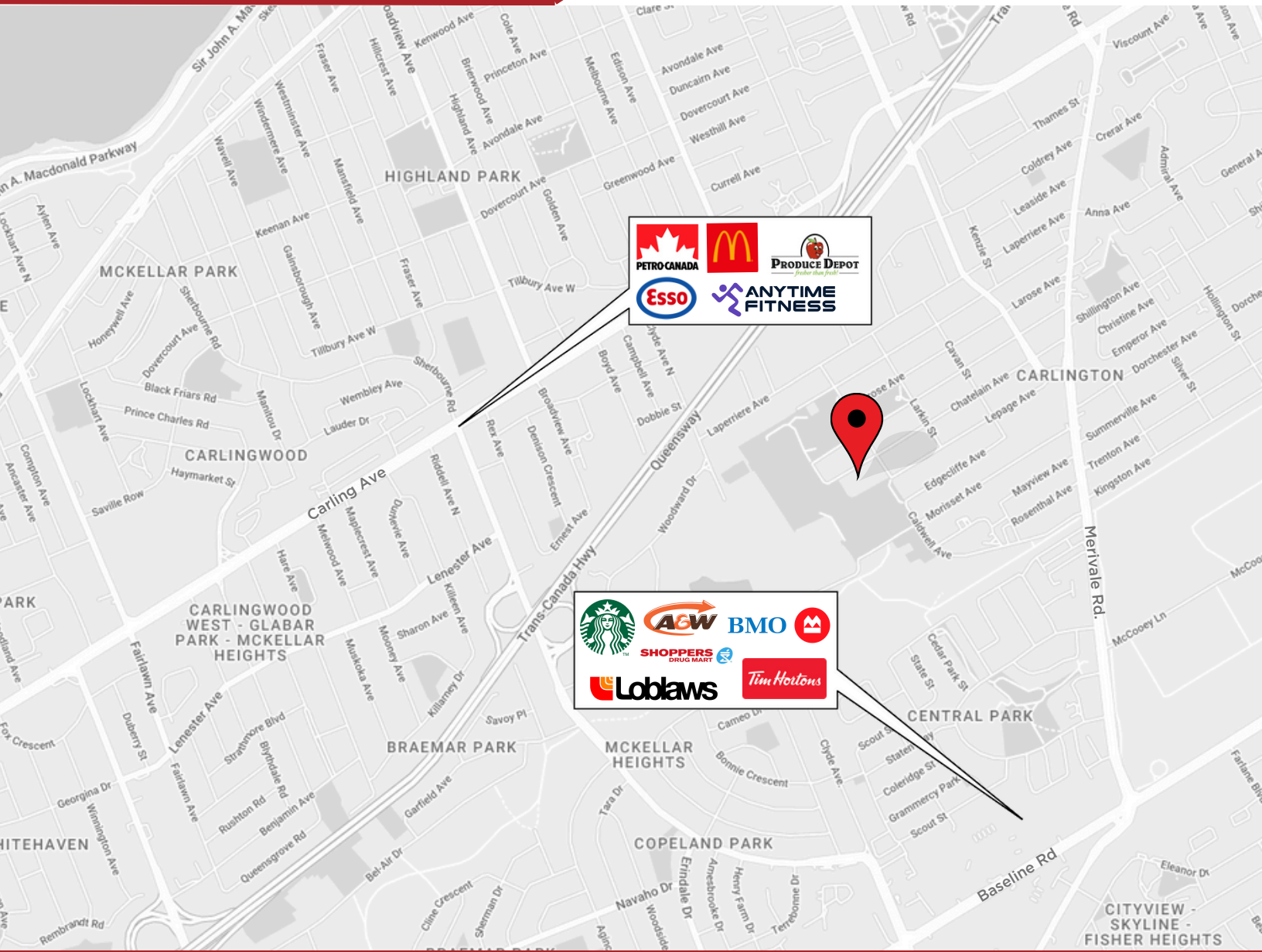
## UNIT HIGHLIGHTS

- At-grade loading dock with 14' clearance
- 16' ceiling heights





1546 Chatelain Ave.  
OTTAWA, ONTARIO



## LOCATION DETAILS

- Public transit stop nearby
- Close to Carling Ave and Hwy. 417.
- Centrally located near the Woodward Industrial Park

Information contained herein has been obtained from sources that we deem to be reliable but is not warranted as such and does not form any part of any future contract. This offering may be altered or withdrawn at any time without notice.

**THE PROPERTIES GROUP MANAGEMENT LTD.**  
236 Metcalfe Street, Ottawa, ON K2P 1R3

**((613) 369-5635 / [leasing@prpgrp.com](mailto:leasing@prpgrp.com)**  
**[www.thepropertiesgroup.ca](http://www.thepropertiesgroup.ca)**