

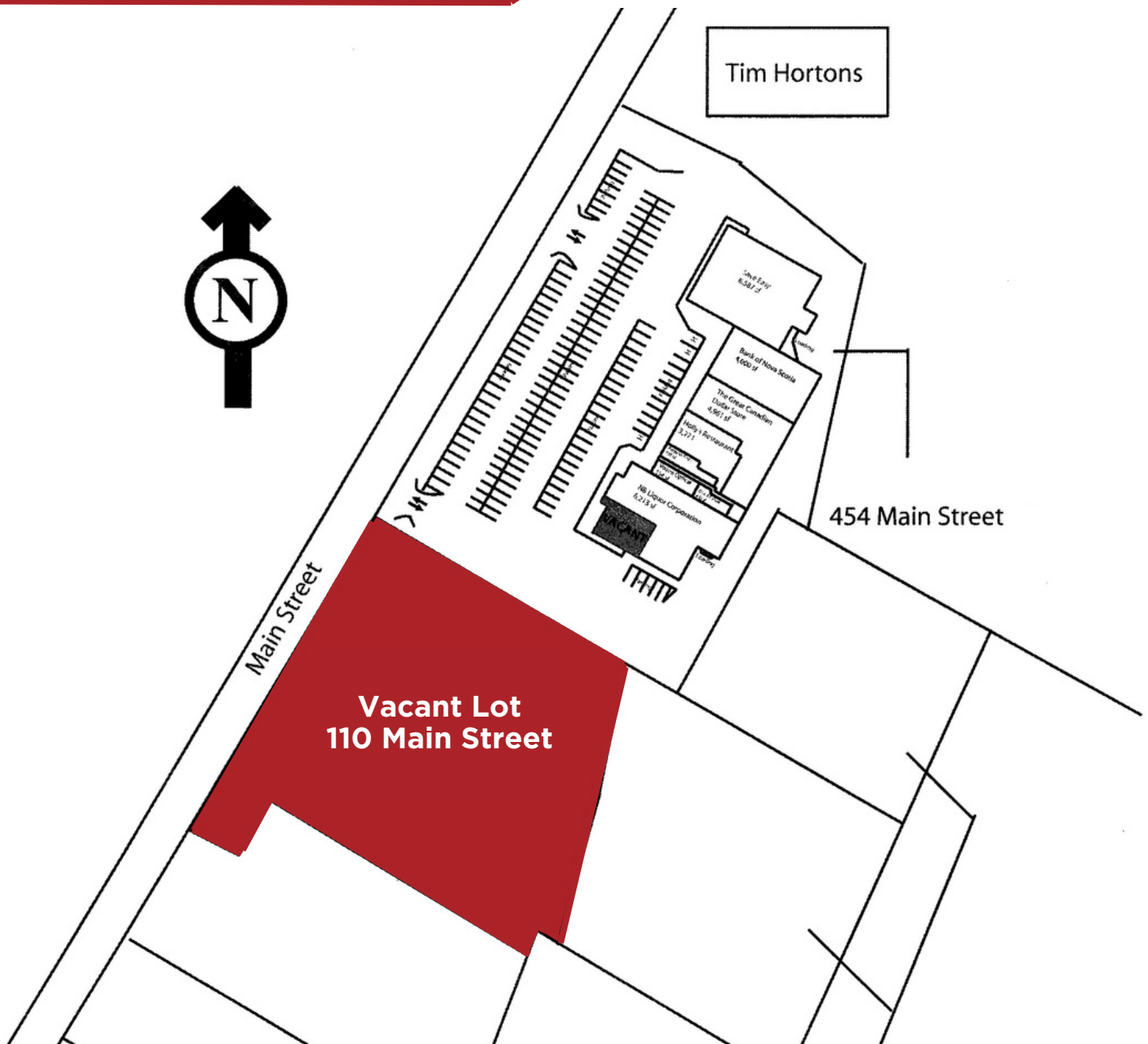
LAND FOR SALE OR LEASE



**110 Main St.
HAMPTON, NEW BRUNSWICK**



110 Main St.
HAMPTON, NB



THE ATTACHED DRAWINGS ARE PROVIDED FOR INFORMATION PURPOSES ONLY AND SHOULD NOT BE RELIED UPON. THE LANDLORD SHALL NOT BE HELD RESPONSIBLE FOR THE PURPOSE OF THE TENANT'S WORK AND SPACE PLANNING.

LOT OVERVIEW

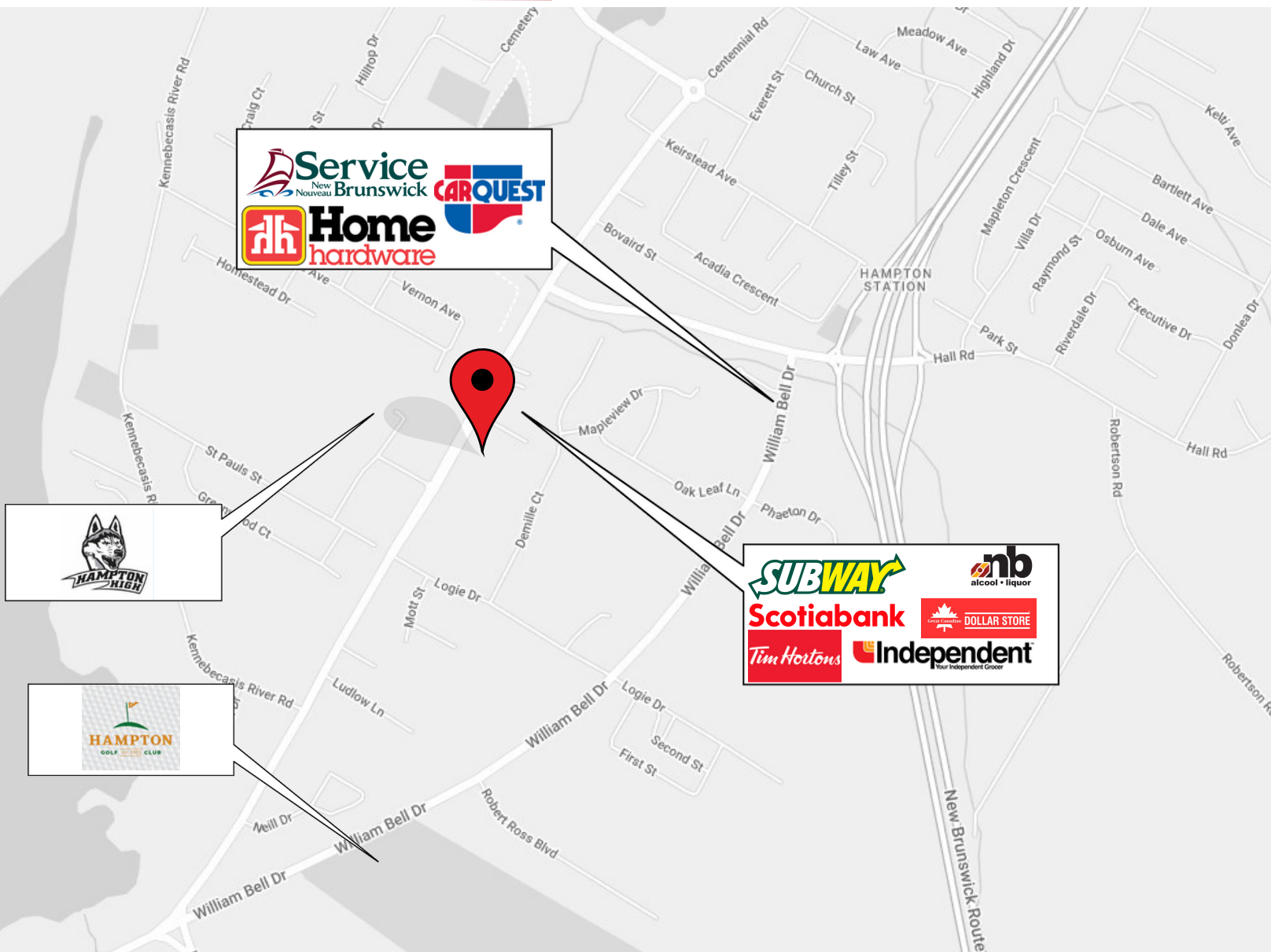
This development opportunity is located in the south end of the Town of Hampton. This site neighbors the Hampton Mall and national retailers such as Scotiabank, Independent, Tim Horton's, and Subway.

THE PROPERTIES GROUP MANAGEMENT LTD.
236 Metcalfe Street, Ottawa, ON K2P 1R3

(613) 369-5635 / leasing@prpgrp.com
www.thepropertiesgroup.ca



110 Main St.
HAMPTON, NB



Demographics

*Source: Statistics Canada, 2021 Census.

- Population: 4,395
- Average Household Income* \$104,000

Information contained herein has been obtained from sources that we deem to be reliable but is not warranted as such and does not form any part of any future contract. This offering may be altered or withdrawn at any time without notice.

THE PROPERTIES GROUP MANAGEMENT LTD.
236 Metcalfe Street, Ottawa, ON K2P 1R3

(613) 369-5635 / leasing@prpgrp.com
www.thepropertiesgroup.ca