

# FOR LEASE



**1309 Wellington St. W.  
OTTAWA, ONTARIO**





1309 Wellington St. W.  
OTTAWA, ONTARIO



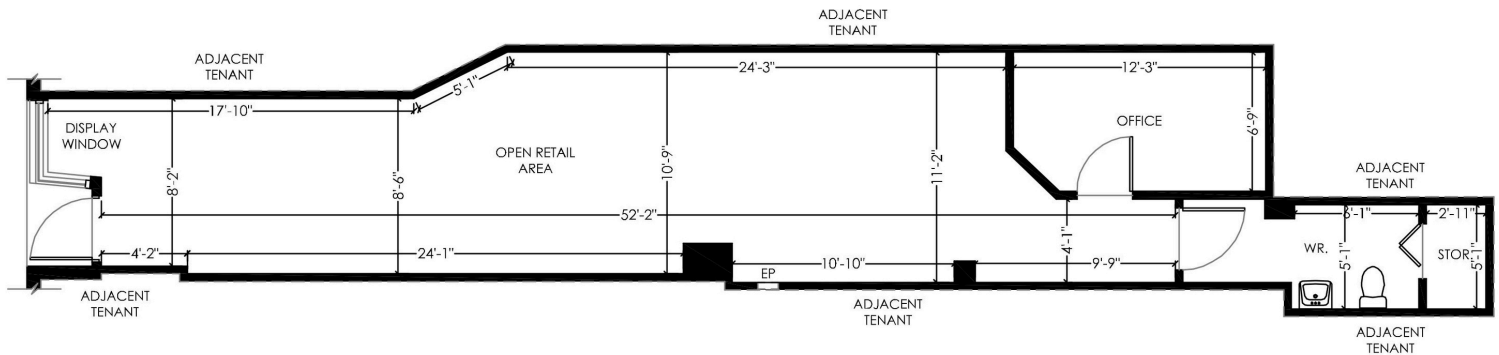
**THE PROPERTIES GROUP MANAGEMENT LTD.**  
236 Metcalfe Street, Ottawa, ON K2P 1R3

(613) 369-5635 / [leasing@prpgrp.com](mailto:leasing@prpgrp.com)  
[www.thepropertiesgroup.ca](http://www.thepropertiesgroup.ca)



**1309 Wellington St. W.  
OTTAWA, ONTARIO**

## **UNIT 1309 - 702 square feet**



THE ATTACHED DRAWINGS ARE PROVIDED FOR INFORMATION PURPOSES ONLY AND SHOULD NOT BE RELIED UPON. THE LANDLORD SHALL NOT BE HELD RESPONSIBLE FOR THE PURPOSE OF THE TENANT'S WORK AND SPACE PLANNING.

## **UNIT OVERVIEW**

Nestled in the heart of Wellington Village, walking distance from Tunney's Pasture LRT Station this 702 sq. ft. unit features a display window. This unit neighbours the countless restaurants, cafes, retail boutiques, and services located on Wellington St. W.

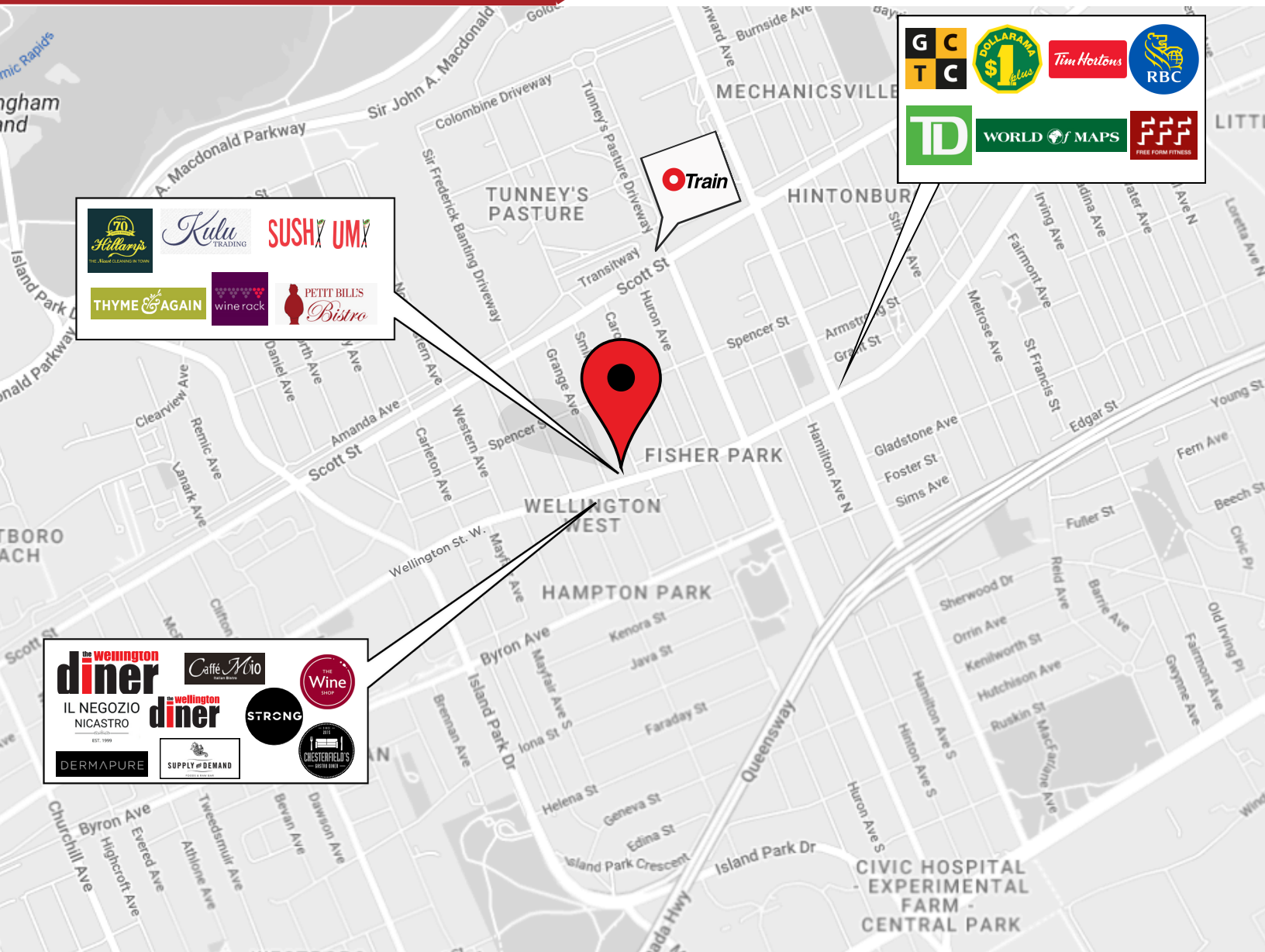
## **UNIT HIGHLIGHTS**

- Display window.
- Storage space.





1309 Wellington St. W.  
OTTAWA, ONTARIO



## LOCATION DETAILS

- Prime retail location
- Year-round foot traffic
- Close proximity to Tunney's Pasture O-Train station
- Close proximity to Hwy. 417 Parkdale exit

Information contained herein has been obtained from sources that we deem to be reliable but is not warranted as such and does not form any part of any future contract. This offering may be altered or withdrawn at any time without notice.

**THE PROPERTIES GROUP MANAGEMENT LTD.**  
236 Metcalfe Street, Ottawa, ON K2P 1R3

(613) 369-5635 / [leasing@prpgrp.com](mailto:leasing@prpgrp.com)  
[www.thepropertiesgroup.ca](http://www.thepropertiesgroup.ca)