

FOR LEASE



85 Murray St.
OTTAWA, ONTARIO



85 Murray St.
OTTAWA, ONTARIO

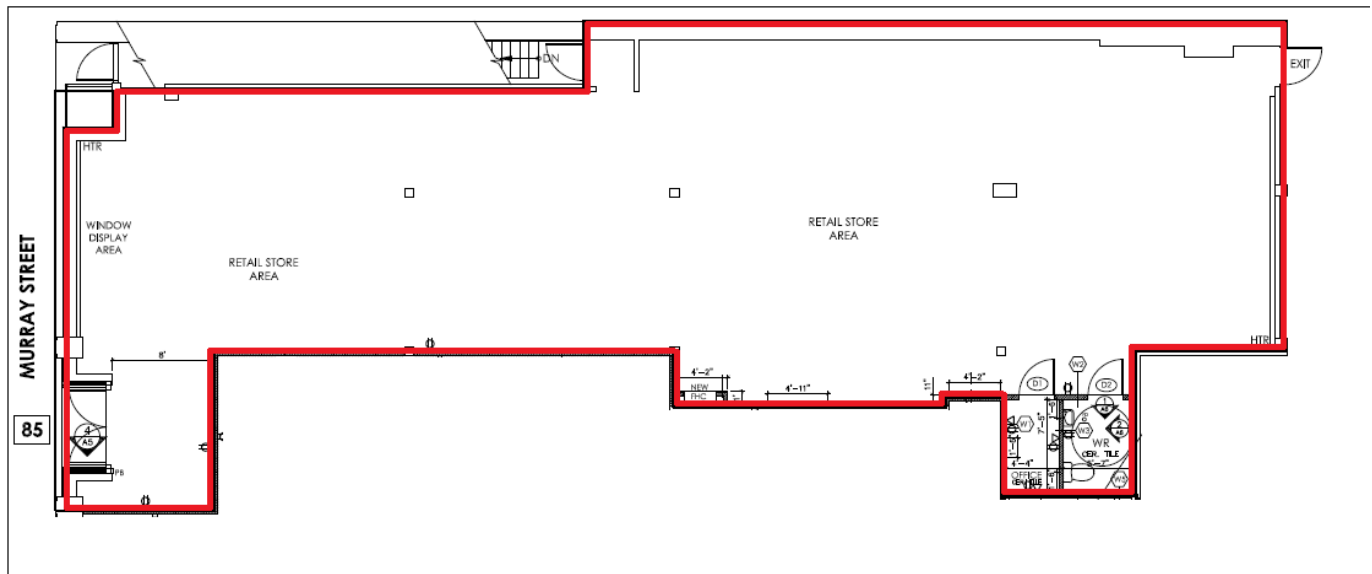




85 Murray St.
OTTAWA, ONTARIO

FLOOR PLAN

3,018 square feet



THE ATTACHED DRAWINGS ARE PROVIDED FOR INFORMATION PURPOSES ONLY AND SHOULD NOT BE RELIED UPON. THE LANDLORD SHALL NOT BE HELD RESPONSIBLE FOR THE PURPOSE OF THE TENANT'S WORK AND SPACE PLANNING.

UNIT OVERVIEW

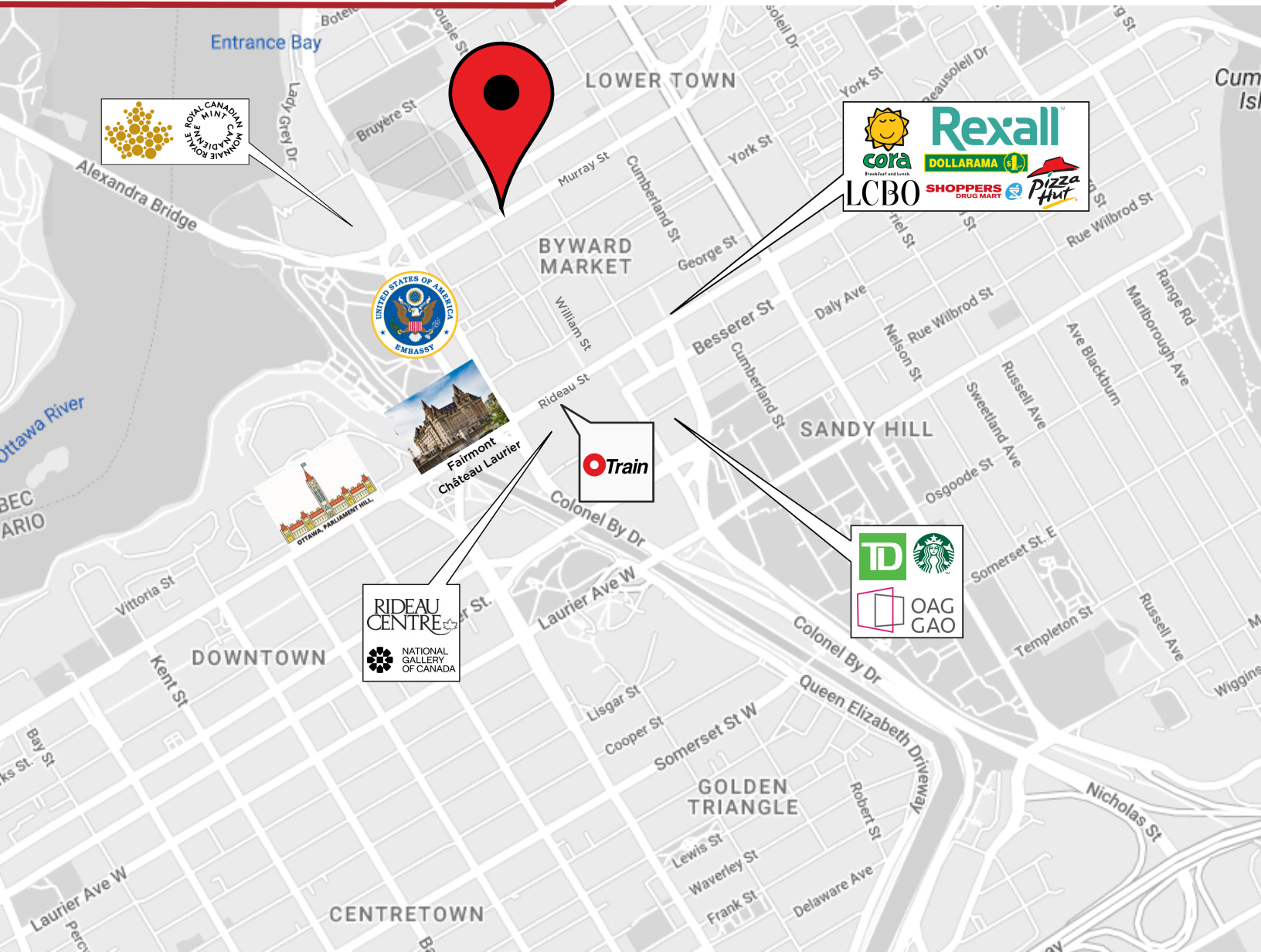
This 3,018 sq. ft. ground floor unit offers prime frontage on Murray Street, right in the heart of the ByWard Market - one of Ottawa's most iconic and visited destinations. Known for its mix of trendy restaurants, boutiques, and cafés, the ByWard Market attracts thousands of locals and tourists year-round. The space features an open floor plan with expansive floor-to-ceiling windows that flood the interior with natural light, perfect for creating a bright and welcoming retail or service environment. With exceptional visibility and foot traffic, this location presents a standout opportunity for businesses looking to be part of an energetic downtown community.

UNIT HIGHLIGHTS

- Great retail/restaurant use
- Open concept unit
- Ground floor
- Floor to ceiling windows



85 Murray St.
OTTAWA, ONTARIO



LOCATION DETAILS

- ByWard Market
- Busy pedestrian neighbourhood
- Close proximity to Rideau O-Train station and Rideau Centre

Information contained herein has been obtained from sources that we deem to be reliable but is not warranted as such and does not form any part of any future contract. This offering may be altered or withdrawn at any time without notice.

THE PROPERTIES GROUP MANAGEMENT LTD.
236 Metcalfe Street, Ottawa, ON K2P 1R3

(613) 369-5635 / leasing@prpgrp.com
www.thepropertiesgroup.ca