

# FOR LEASE



**105 - 1556 Merivale Road  
OTTAWA, ONTARIO**





105 - 1556 Merivale Road  
OTTAWA, ONTARIO



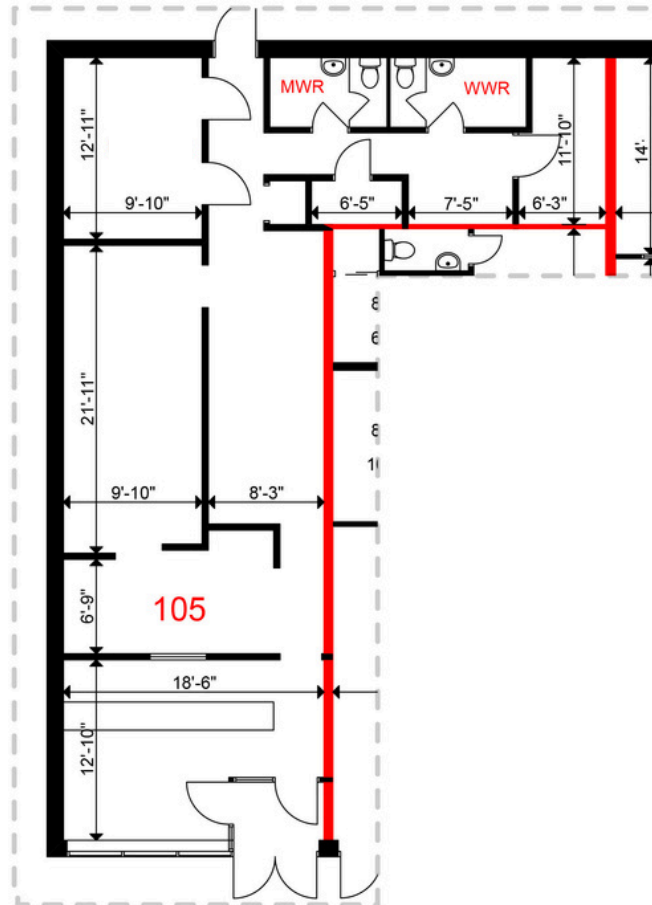
**THE PROPERTIES GROUP MANAGEMENT LTD.**  
236 Metcalfe Street, Ottawa, ON K2P 1R3

(613) 369-5635 / [leasing@prpgrp.com](mailto:leasing@prpgrp.com)  
[www.thepropertiesgroup.ca](http://www.thepropertiesgroup.ca)



105 - 1556 Merivale Road  
OTTAWA, ONTARIO

**~1,423 square feet of gross leasable area**



THE ATTACHED DRAWINGS ARE PROVIDED FOR INFORMATION PURPOSES ONLY AND SHOULD NOT BE RELIED UPON. THE LANDLORD SHALL NOT BE HELD RESPONSIBLE FOR THE PURPOSE OF THE TENANT'S WORK AND SPACE PLANNING.

## UNIT OVERVIEW

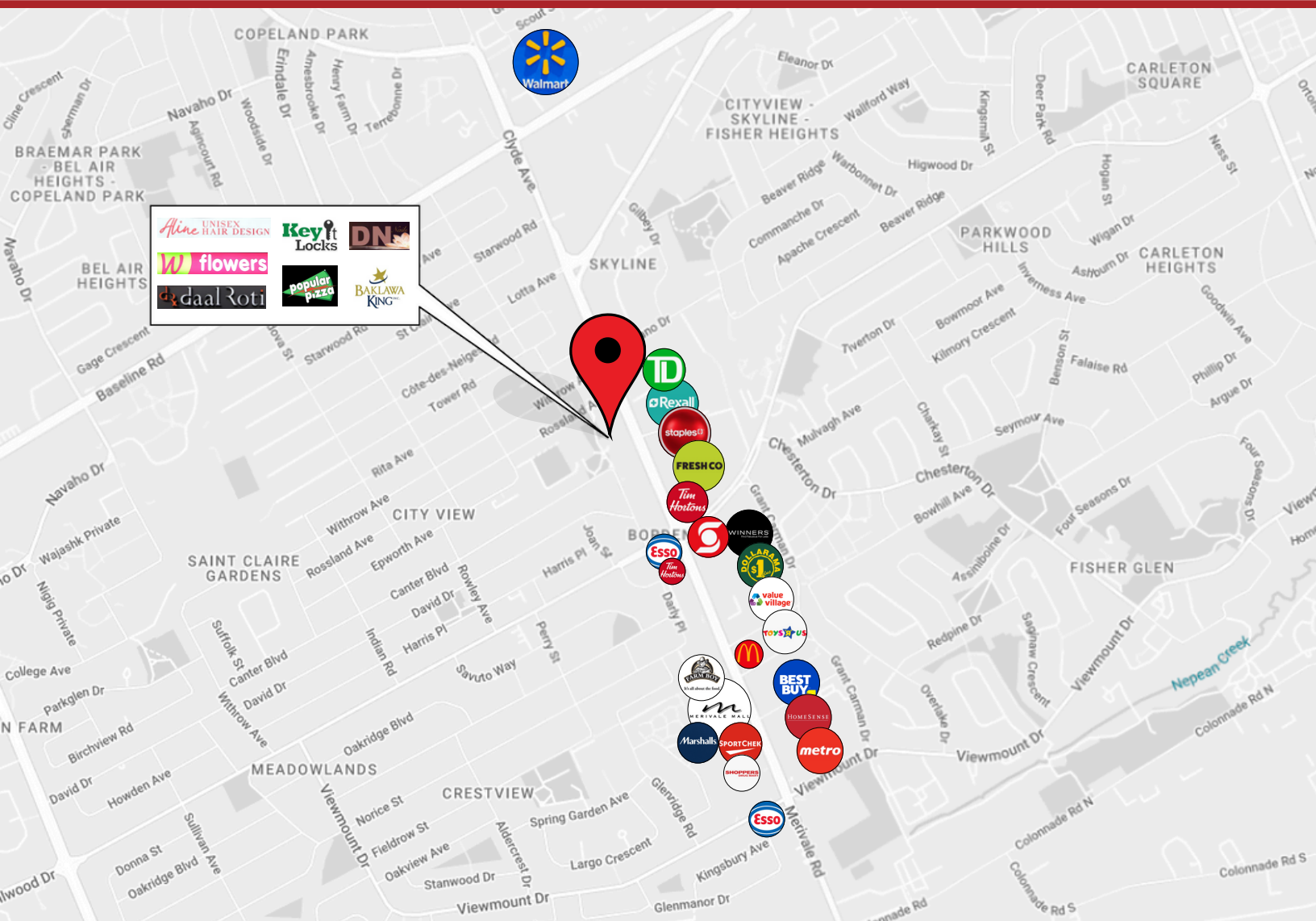
This 1,423 sq. ft. ground-floor corner unit is located in an established plaza, in the heart of the Merivale Road commercial district. Available October 1, 2026.



105 - 1556 Merivale Road  
OTTAWA, ONTARIO

## LOCATION

- Prime location with exceptional pedestrian and vehicle traffic.
- Neighbouring major national retailers.
- Convenient access to public transportation.



Information contained herein has been obtained from sources that we deem to be reliable but is not warranted as such and does not form any part of any future contract. This offering may be altered or withdrawn at any time without notice.