

# **FOR LEASE**



**250 Somerset Street West  
OTTAWA, ONTARIO**





# 250 Somerset Street West OTTAWA, ONTARIO







# 250 Somerset Street West OTTAWA, ONTARIO

UNIT	AREA	MINIMUM RENT	TYPE	AVAILABILITY
Lower Level	~1,800 SF	\$5,500/MONTH	OFFICE	March 1, 2027

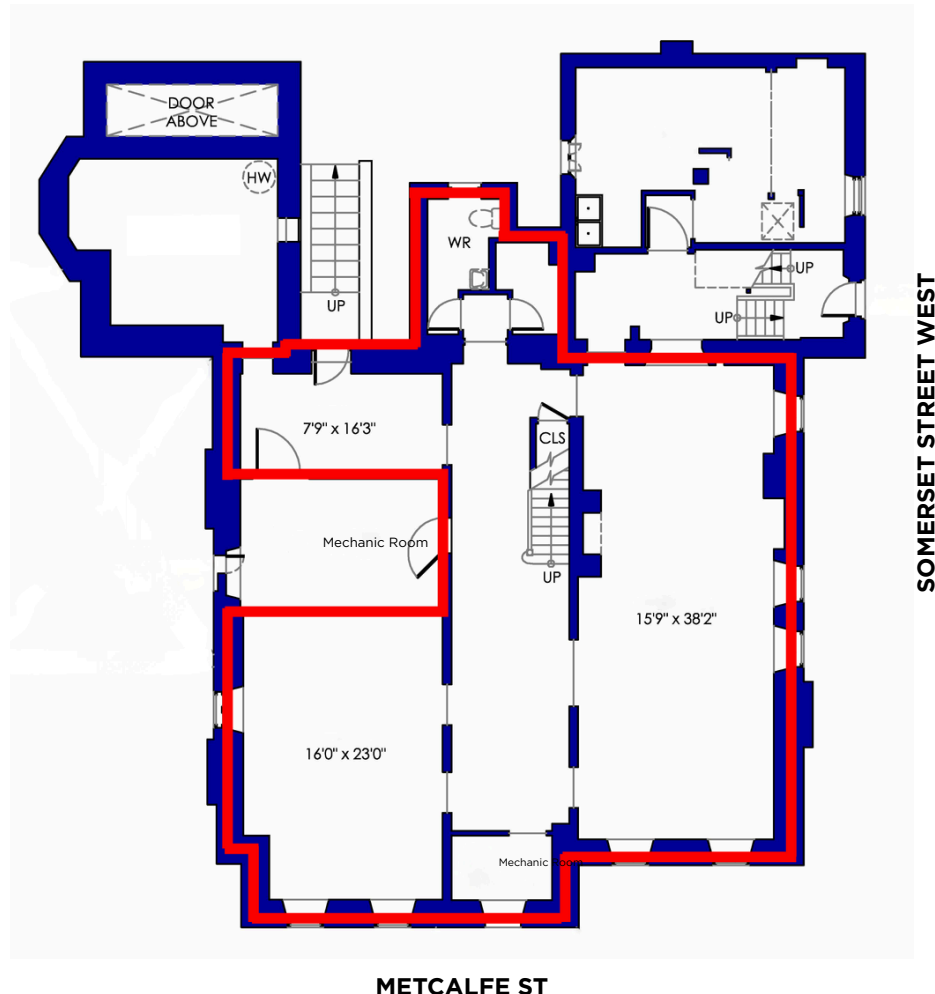




250 Somerset Street West  
OTTAWA, ONTARIO

## FLOOR PLAN

~1800 square feet of gross leasable area



THE ATTACHED DRAWING PROVIDED FOR INFORMATION PURPOSES ONLY AND SHOULD NOT BE RELIED UPON. THE LANDLORD SHALL NOT BE HELD RESPONSIBLE FOR THE PURPOSE OF THE TENANT'S WORK AND SPACE PLANNING.

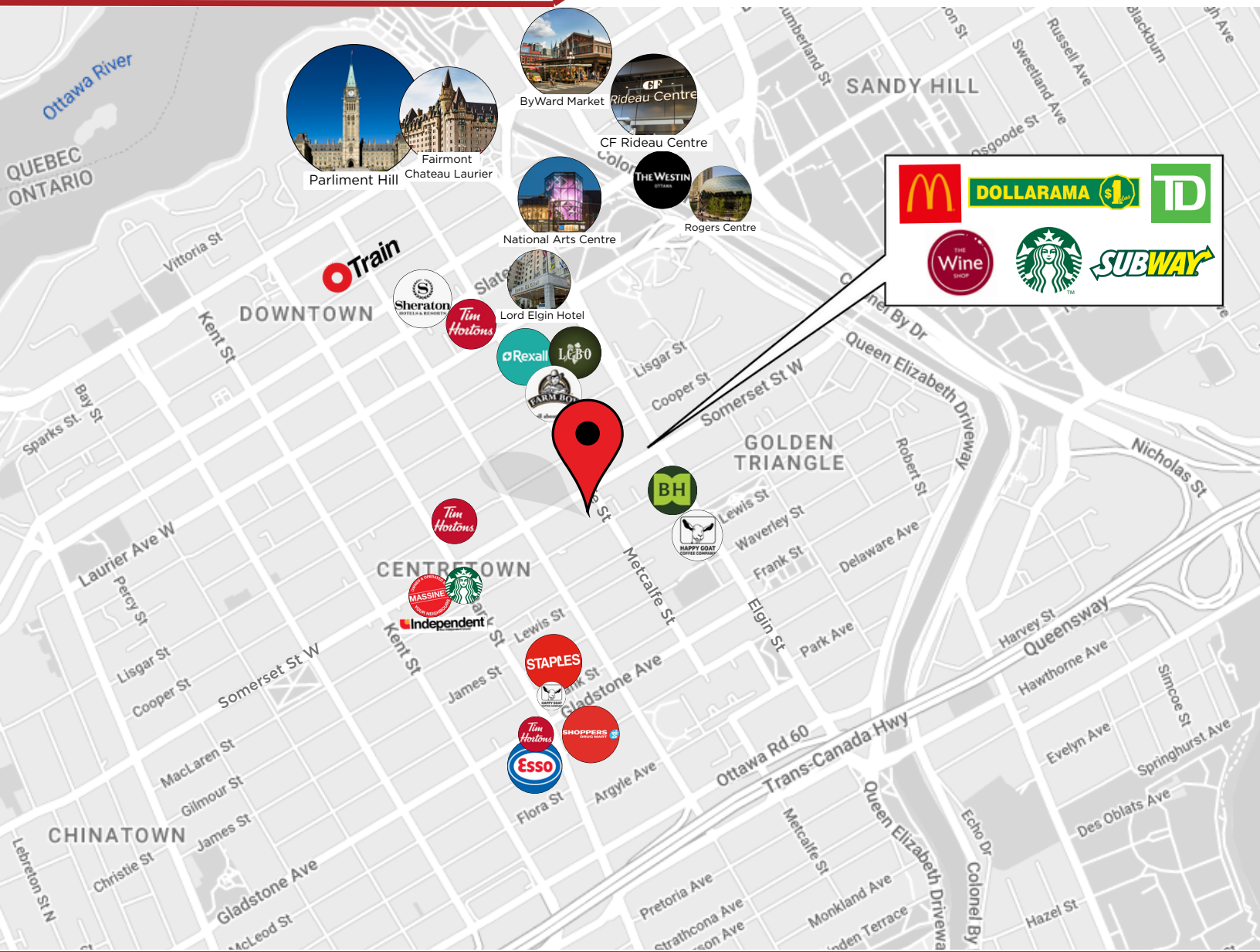
## UNIT OVERVIEW

Bright, lower level unfurnished office unit in a distinguished heritage building. Centrally located in downtown Ottawa near the Courthouse and City Hall, this space is ideal for professionals or service based businesses.





# 250 Somerset Street West OTTAWA, ONTARIO



## LOCATION

- 3-4 minutes walking distance to public transit.
- 5 minutes drive from the Highway 417 Metcalfe exit.
- Centrally located to local shops and restaurants.

Information contained herein has been obtained from sources that we deem to be reliable but is not warranted as such and does not form any part of any future contract. This offering may be altered or withdrawn at any time without notice.

**THE PROPERTIES GROUP MANAGEMENT LTD.**  
236 Metcalfe Street, Ottawa, ON K2P 1R3

**(613) 369-5635 / [leasing@prpgrp.com](mailto:leasing@prpgrp.com)**  
**[www.thepropertiesgroup.ca](http://www.thepropertiesgroup.ca)**