

FOR LEASE

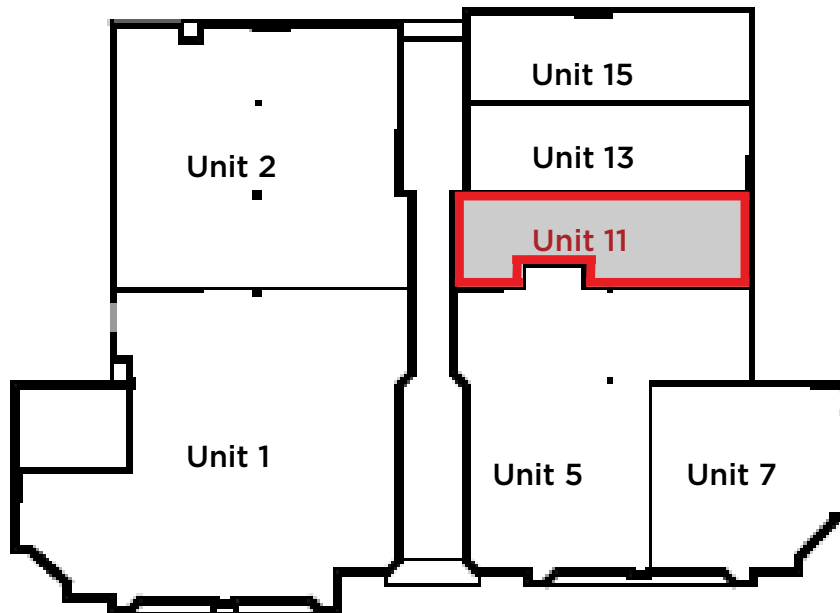
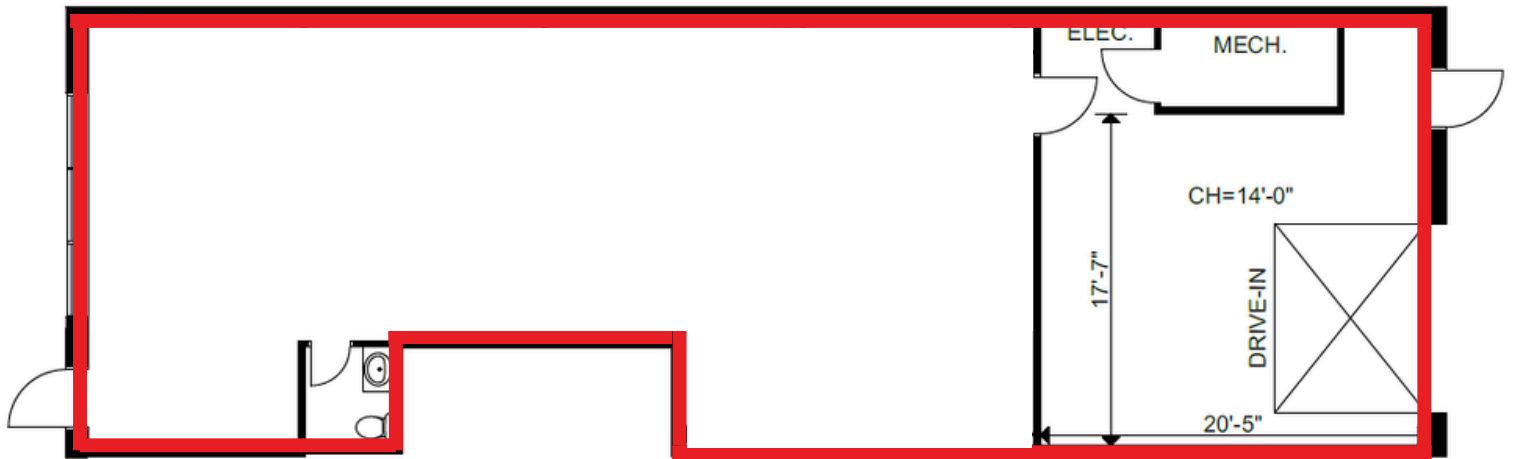


**Unit 11 - 205 Riviera Drive
MARKHAM, ONTARIO**



FLOOR PLAN AND SITE PLAN

~1,775 square feet of gross leasable area



THE ATTACHED DRAWINGS ARE PROVIDED FOR INFORMATION PURPOSES ONLY AND SHOULD NOT BE RELIED UPON. THE LANDLORD SHALL NOT BE HELD RESPONSIBLE FOR THE PURPOSE OF THE TENANT'S WORK AND SPACE PLANNING.



Unit 11 - 205 Riviera Drive MARKHAM, ONTARIO

UNIT	AREA	FIXED MINIMUM RENT	ADDITIONAL RENT	AVAILABLE
11	-1,775 SF	Call for rates.	\$7.15/SF (2024 Actual)	March 1, 2027



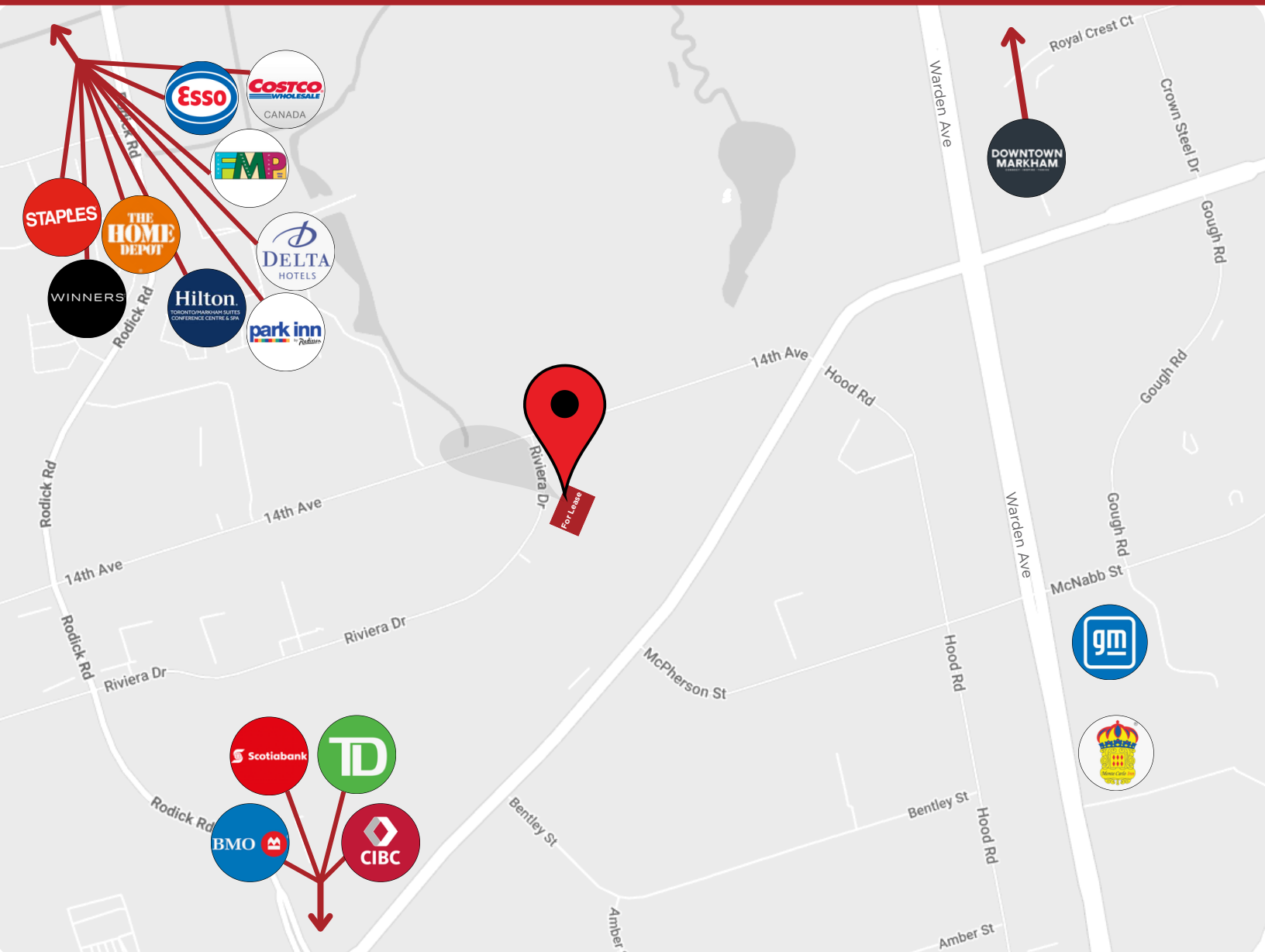
UNIT OVERVIEW

This ~1,775 sq. ft. flex unit is located on Riviera Dr., just off 14th Ave. between Woodbine Ave. and Warden Ave., in a predominantly industrial and commercial business district. The unit offers an open workspace at the front, with a warehouse and storage area at the rear, complete with a drive-in door, ideal for a wide range of flex-space users. Ample on-site parking provides convenient access for both employees and clients.



Unit 11 - 205 Riviera Drive MARKHAM, ONTARIO

LOCATION



Information contained herein has been obtained from sources that we deem to be reliable but is not warranted as such and does not form any part of any future contract. This offering may be altered or withdrawn at any time without notice.