

FOR LEASE



**1680-1690 Woodward Drive
OTTAWA, ONTARIO**



1680-1690 Woodward Drive
OTTAWA, ONTARIO

UNIT	AREA	MINIMUM RENT	TYPE	AVAILABLE
203	931 SF	\$2,500/MONTH	OFFICE	IMMEDIATELY

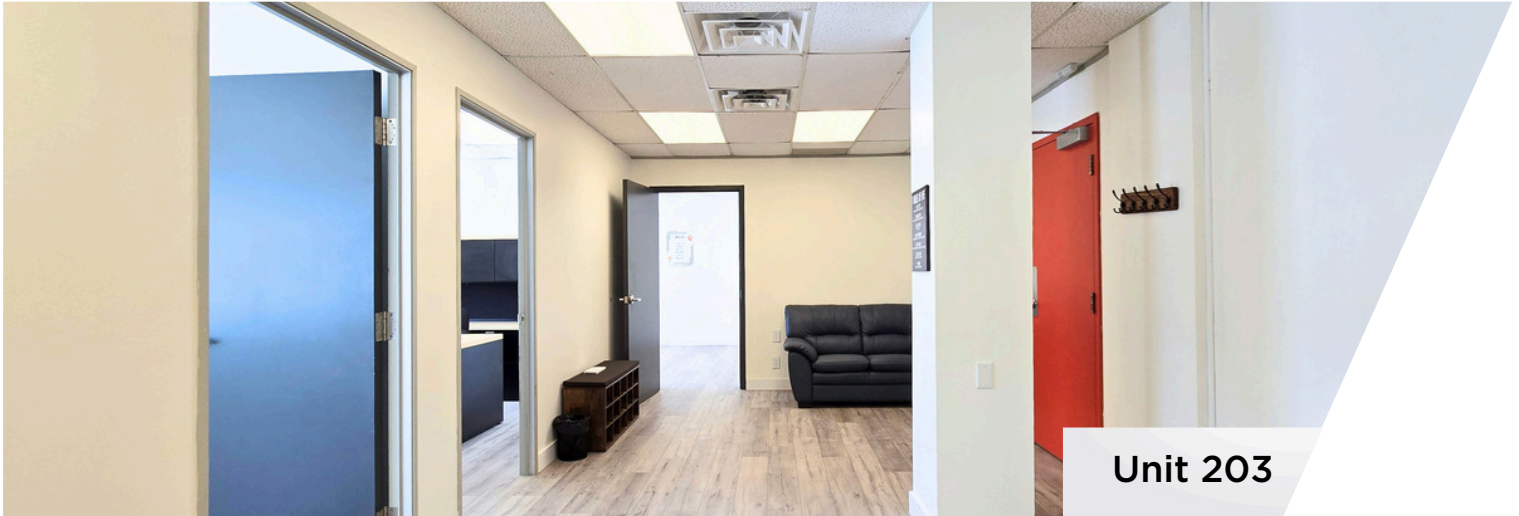


THE PROPERTIES GROUP MANAGEMENT LTD.
236 Metcalfe Street, Ottawa, ON K2P 1R3

(613) 369-5635 / leasing@prpgrp.com
www.thepropertiesgroup.ca



1680-1690 Woodward Drive
OTTAWA, ONTARIO



Unit 203



Unit 203

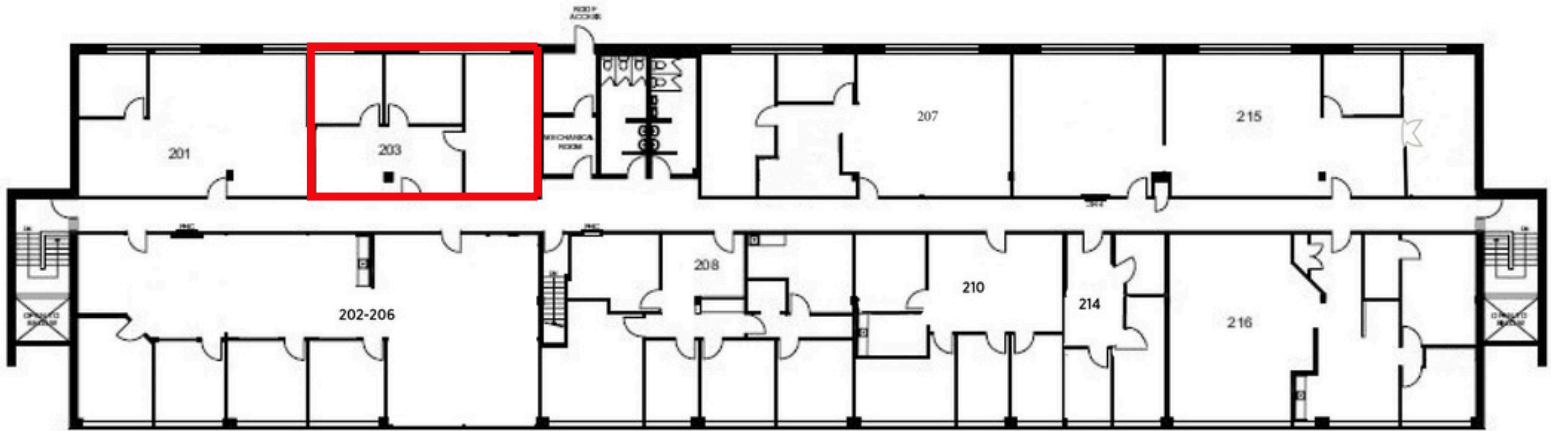


Unit 203



1680-1690 Woodward Drive
OTTAWA, ONTARIO

UNIT 203 ~931 square feet, gross leasable area



THE ATTACHED DRAWING PROVIDED FOR INFORMATION PURPOSES ONLY AND SHOULD NOT BE RELIED UPON. THE LANDLORD SHALL NOT BE HELD RESPONSIBLE FOR THE PURPOSE OF THE TENANT'S WORK AND SPACE PLANNING.

UNIT OVERVIEW

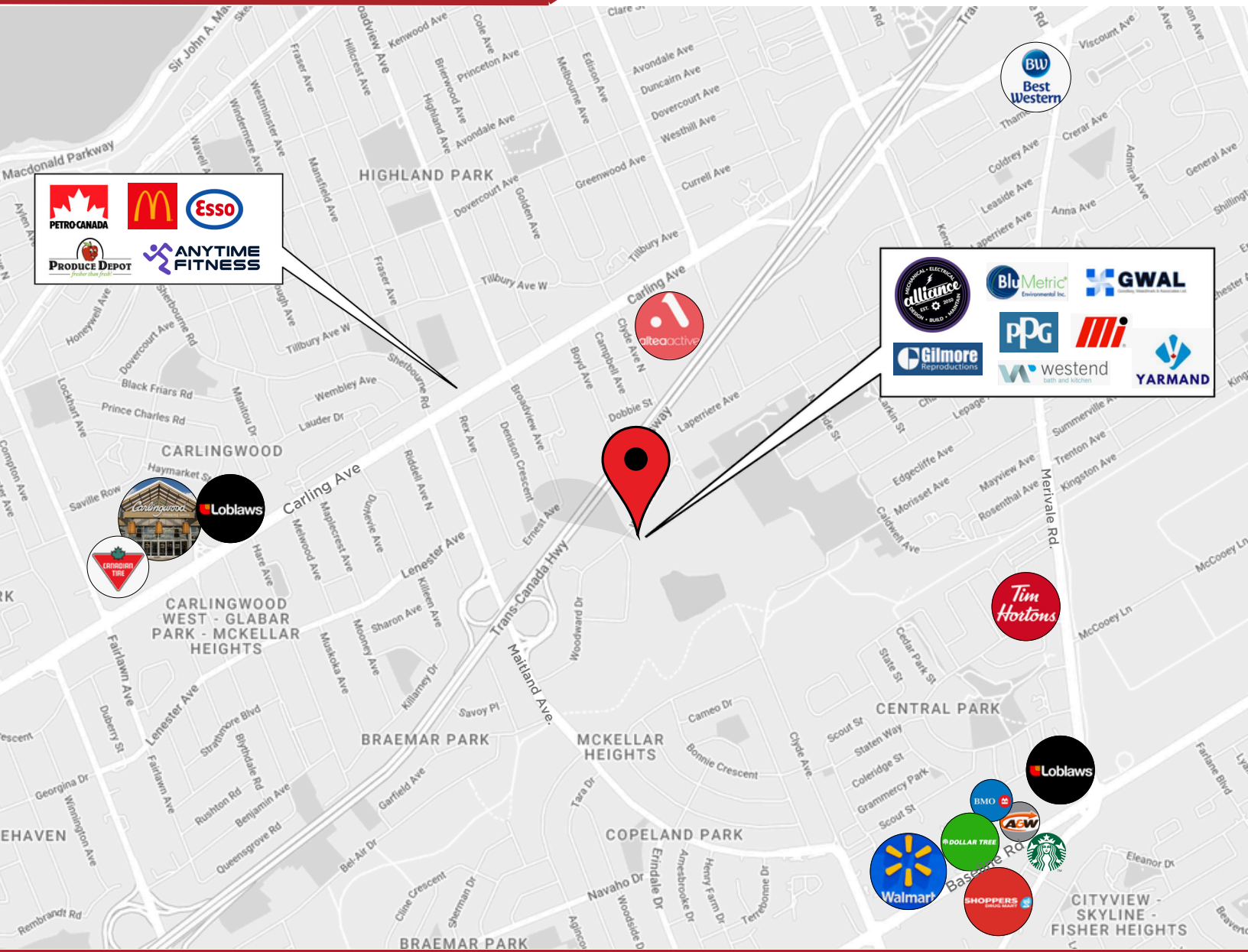
These bright and flexible office spaces are located in the busy Woodward Industrial Park. This unit offers modern finishes, plenty of natural light, and an easy open layout that suits a variety of business needs. The building offers after-hours fob access, and recently updated common washrooms. On-site parking available.

UNIT HIGHLIGHTS

- Move-in ready with modern finishes
- Flexible space suitable for offices or studios



1680-1690 Woodward Drive
OTTAWA, ONTARIO



LOCATION DETAILS

- Centrally located in the Woodward Industrial Park
- Easy access to transit and nearby amenities
- Two minutes away from Carling Ave. and Highway 417

Information contained herein has been obtained from sources that we deem to be reliable but is not warranted as such and does not form any part of any future contract. This offering may be altered or withdrawn at any time without notice.

THE PROPERTIES GROUP MANAGEMENT LTD.
236 Metcalfe Street, Ottawa, ON K2P 1R3

(613) 369-5635 / leasing@prpgrp.com
www.thepropertiesgroup.ca