

FOR LEASE



105 Clarence St. - Unit A
OTTAWA, ONTARIO

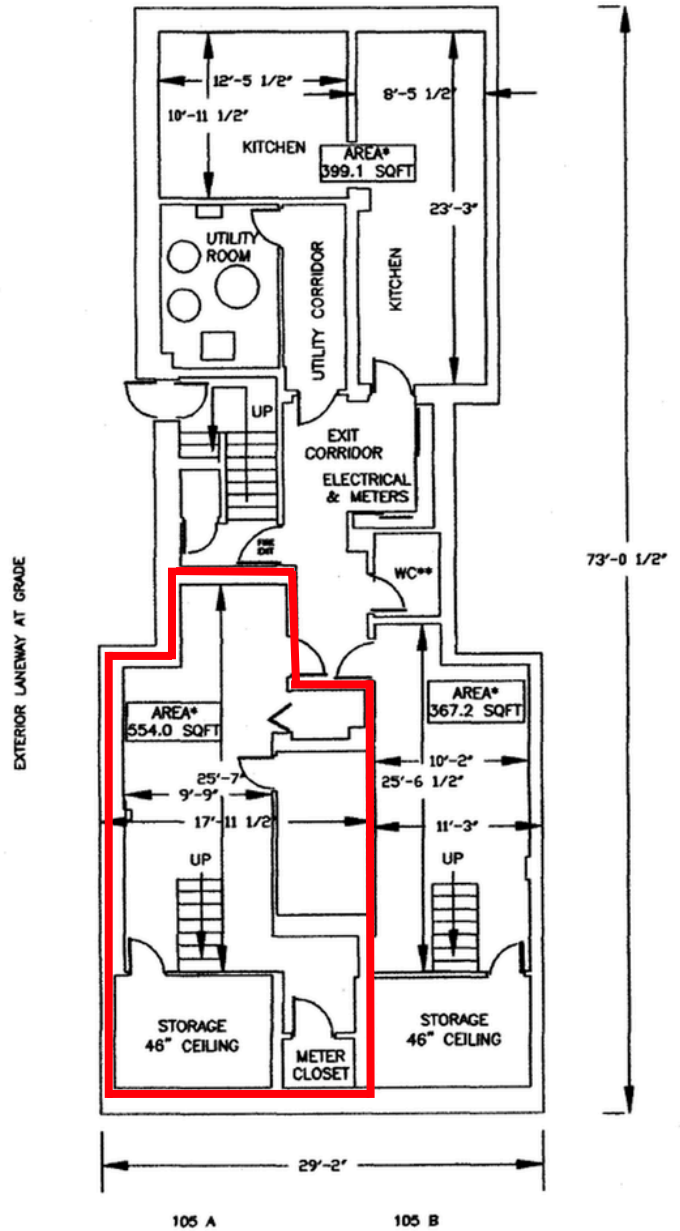
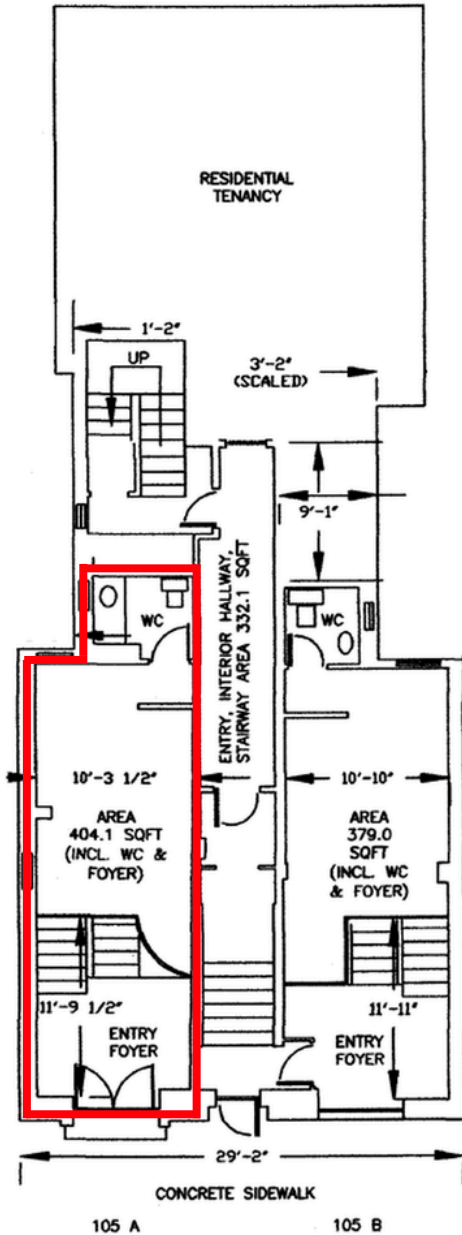


FLOOR PLAN

TOTAL ~958 square feet of gross leasable area

GROUND LEVEL ~404 square feet

LOWER LEVEL ~554 square feet



THE ATTACHED DRAWINGS ARE PROVIDED FOR INFORMATION PURPOSES ONLY AND SHOULD NOT BE RELIED UPON. THE LANDLORD SHALL NOT BE HELD RESPONSIBLE FOR THE PURPOSE OF THE TENANT'S WORK AND SPACE PLANNING.



105 Clarence St. Unit A
OTTAWA, ONTARIO

UNIT	AREA	RENT COMMENCING AT	AVAILABLE
A	-958 SF	\$6,400/MONTH	MAY 1, 2027

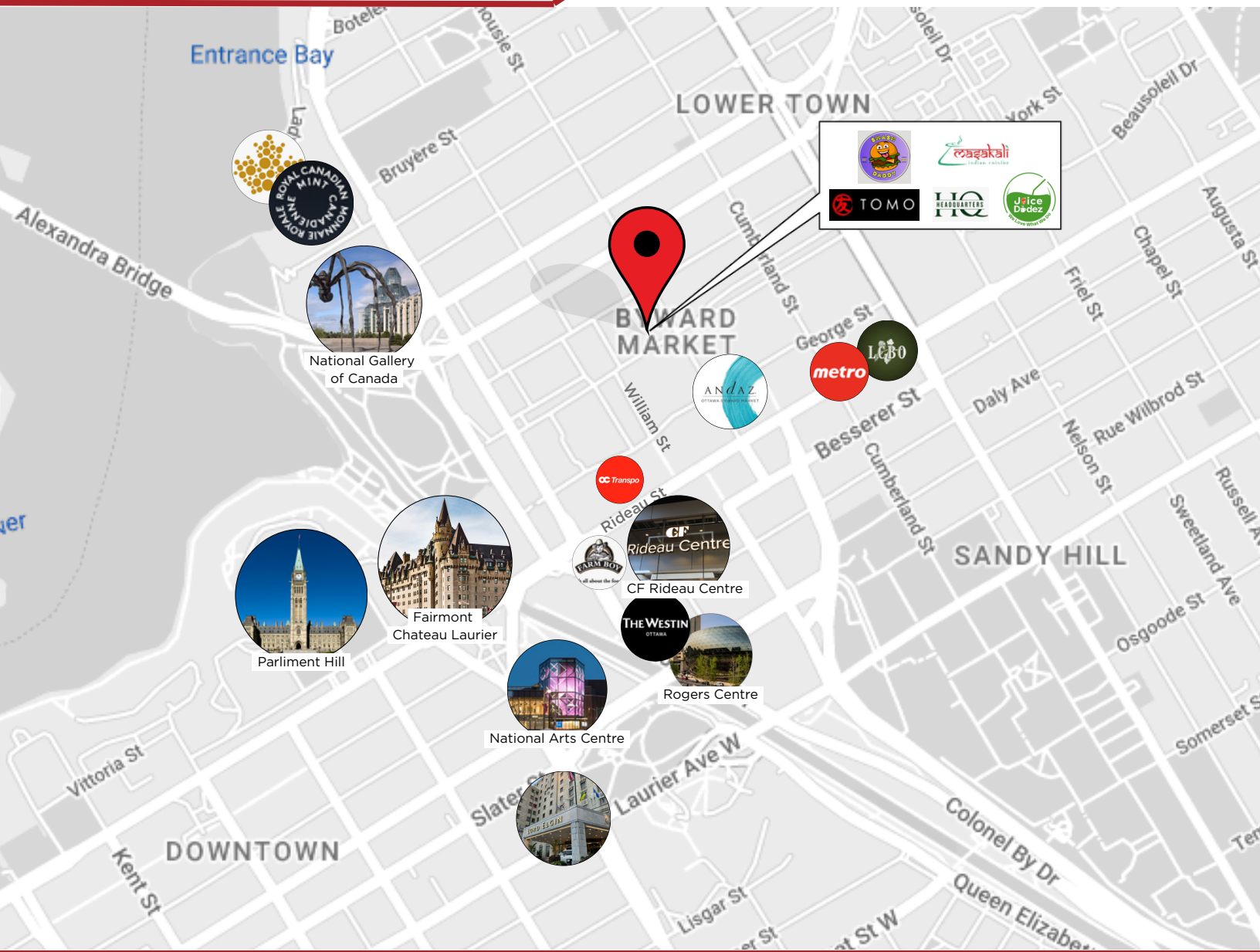


UNIT OVERVIEW

Located in the heart of the ByWard Market, this split-level unit measures ~958 sq.ft. of space with prime frontage along bustling Clarence St. The layout includes ample room for indoor seating and convenient in-unit storage. Steps from the Rideau Centre, the ByWard Market remains one of Ottawa's most vibrant destinations, attracting both locals and visitors to its farmers' markets, restaurants, boutiques, cafés, and pedestrian-friendly streets.



105 Clarence St. Unit A
OTTAWA, ONTARIO



LOCATION DETAILS

- Prime retail location
- High traffic pedestrian-friendly street
- Close proximity to Rideau O-Train station and Rideau Centre

Information contained herein has been obtained from sources that we deem to be reliable but is not warranted as such and does not form any part of any future contract. This offering may be altered or withdrawn at any time without notice.

THE PROPERTIES GROUP MANAGEMENT LTD.
236 Metcalfe Street, Ottawa, ON K2P 1R3

(613) 369-5635 / leasing@prpgrp.com
www.thepropertiesgroup.ca